



GOVERNMENT GAZETTE

OF THE

REPUBLIC OF NAMIBIA

N\$8.40

WINDHOEK - 6 March 2020

No. 7138

CONTENTS

Page

GOVERNMENT NOTICES

65	Declaration of area of inland waters as fisheries reserve: Luhingi Fishing area in Mayuni Conservancy: Inland Fisheries Resources Act, 2003	1
66	Declaration of areas of inland waters as fisheries reserve: Qhuqhumupa and Kalume Fishing areas in Balyerwa Conservancy: Inland Fisheries Resources Act, 2003	4
67	Declaration of area of inland waters as fisheries reserve: Lwezuba and Kabweza fishing areas in Lusese Conservancy: Inland Fisheries Resources Act, 2003	7
68	Declaration of Munga, Nsala and Makumbi Fishing area as Fisheries Reserve: Inland Fisheries Resources Act, 2003	10

Government Notices

MINISTRY OF FISHERIES AND MARINE RESOURCES

No. 65

2020

DECLARATION OF AREA OF INLAND WATERS AS FISHERIES RESERVE: LUHINGI FISHING AREA IN MAYUNI CONSERVANCY: INLAND FISHERIES RESOURCES ACT, 2003

Under section 22(1) of the Inland Fisheries Resources Act, 2003 (Act No. 1 of 2003), I, in response to an initiative of the Zambezi Regional Council and the Mashu Traditional Authority and in consultation with that Regional Council and that Traditional Authority, declare the Luhingi fishing area in the Mayuni Conservancy as a fisheries reserve more fully described in, and subject to the conditions set out in, the Schedule.

DR. A. KAWANA
ACTING MINISTER OF FISHERIES
AND MARINE RESOURCES

Windhoek, 22 February 2020

SCHEDULE

1. Description of fisheries reserve

The Luhingi Fisheries Reserve includes the area called Luhingi and is a channel from the main stream of the Kwando River opening up into an oxbow lake, across a floodplain to the Kwando River bordering the Bwabwata National Park. This falls in the Mayuni Conservancy that borders the B8 tar road, towards the east to Mulanga village, in a south westerly direction to Big Mukushi further towards Natunya, then towards Njilangobe Pool, then towards the west to Sijwa on the Kwando River, then northwards along the Kwando River to the Kongola Bridge.

The entire channel between the banks (at low flow) from the point at which it leaves the main Kwando River course (Luhingi Channel entrance) and floodplain downstream to the point where the channel exits into the floodplain connected by a straight line to the main bank of the Kwando River.

2. GPS Coordinates and image of fisheries reserve

WGS 84 GPS units		hddd mm. mmm'					
		South			East		
		Degrees (°)	Minutes	Seconds (')	Degrees	Minutes	Seconds (')
Kwando	Luhingi	17	49	463	23	20	77
Kwando	Luhingi	17	49	446	23	20	124
Kwando	Luhingi	17	49	455	23	20	169
Kwando	Luhingi	17	49	520	23	20	195
Kwando	Luhingi	17	49	544	23	20	185
Kwando	Luhingi	17	49	574	23	20	165
Kwando	Luhingi	17	49	583	23	20	163
Kwando	Luhingi	17	49	600	23	20	164
Kwando	Luhingi	17	49	629	23	20	167
Kwando	Luhingi	17	49	650	23	20	164
Kwando	Luhingi	17	49	679	23	20	168
Kwando	Luhingi	17	49	699	23	20	194
Kwando	Luhingi	17	49	706	23	20	218
Kwando	Luhingi	17	49	701	23	20	233
Kwando	Luhingi	17	49	676	23	20	277
Kwando	Luhingi	17	49	680	23	20	292
Kwando	Luhingi	17	49	678	23	20	319
Kwando	Luhingi	17	49	679	23	20	327
Kwando	Luhingi	17	49	676	23	20	344
Kwando	Luhingi	17	49	677	23	20	363
Kwando	Luhingi	17	49	678	23	20	377
Kwando	Luhingi	17	49	685	23	20	401
Kwando	Luhingi	17	49	690	23	20	420
Kwando	Luhingi	17	49	697	23	20	436
Kwando	Luhingi	17	49	878	23	20	420
Kwando	Luhingi	17	49	883	23	20	404
Kwando	Luhingi	17	49	881	23	20	361

Kwando	Luhingi	17	49	858	23	20	317
Kwando	Luhingi	17	49	827	23	20	289
Kwando	Luhingi	17	49	813	23	20	279
Kwando	Luhingi	17	49	783	23	20	269
Kwando	Luhingi	17	49	540	23	20	75
Kwando	Luhingi	17	49	544	23	20	66
Kwando	Luhingi	17	49	568	23	20	36
Kwando	Luhingi	17	49	659	23	20	0
Kwando	Luhingi	17	49	808	23	20	41

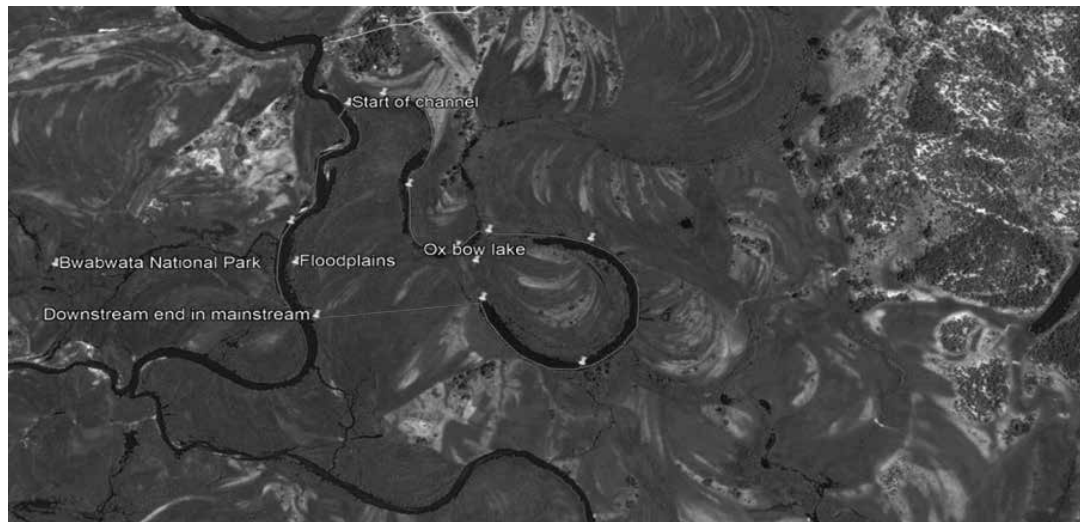


Figure 1: The boundary of the Luhingi Fisheries Reserve in the Mayuni Conservancy, Kwando River. (Perimeter 3.10km) (© 2018 Google LLC.).

3. Specific fishing activities permitted in Luhingi Fisheries Reserve and conditions applicable

- (a) The management agreement drawn up for the Luhingi Fisheries Reserve by the Mayuni Conservancy in association with the Mashi Traditional Authority, the Ministry of Fisheries and Marine Resources and the Zambezi Regional Council in Katima Mulilo is formally recognised.
- (b) No fishing is allowed in the Luhingi Fisheries Reserve.
- (c) No harvesting of plants, animals or sand is allowed in the Luhingi Fisheries Reserve.
- (d) No activity that will impact on the integrity of the ecosystem is allowed in the Luhingi Fisheries Reserve.
- (e) Catch and release of fish, for recreational purposes, may be allowed if approved by the inland fisheries committee contemplated in section 29(1)(c) of the Act, at a fee determined by that committee.
- (f) Patrols for management of the Luhingi Fisheries Reserve will be made by the conservancy tour guides, conservancy game guards and conservancy fish monitors, in close agreement with, and through cooperation with, the Ministry of Fisheries and Marine Resources. These patrols will be assisted by the Ministry of Fisheries and Marine Resources, by the Namibian Police and the Ministry of Environment and Tourism, when necessary.

MINISTRY OF FISHERIES AND MARINE RESOURCES

No. 66

2020

DECLARATION OF AREAS OF INLAND WATERS AS FISHERIES RESERVES:
QHUQHUMUPA AND KALUME FISHING AREAS IN BALYERWA CONSERVANCY:
INLAND FISHERIES RESOURCES ACT, 2003

Under section 22(1) of the Inland Fisheries Resources Act, 2003 (Act No. 1 of 2003), I, in response to an initiative of the Zambezi Regional Council and the Mayeyi Traditional Authority and in consultation with that Regional Council and that Traditional Authority, declare the Qhuqhumupa and Kalume fishing areas in the Balyerwa Conservancy as fisheries reserves more fully described in, and subject to the conditions set out in, the Schedule.

DR. A. KAWANA
ACTING MINISTER OF FISHERIES
AND MARINE RESOURCES

Windhoek, 22 February 2020

SCHEDULE

1. Description of fisheries reserves

The Qhuqhumupa and Kalume Fisheries Reserves are fishing areas more fully described as indicated by their respective GPS coordinates and Figures 1 and 2 set out in item 2.1 and 2.2 respectively and both areas are within the borders of the Balyerwa Conservancy which borders the Nkasa Rupara National Park in the south, the Wuparo Conservancy on the west, the Mudumu National Park in the north and the Kwando River forms part of the eastern border which is also the international border with Botswana.

2. GPS Coordinates and image of fisheries reserves

2.1 GPS Coordinates and image of Qhuqhumupa Fisheries Reserve

WGS 84 GPS units	Backwater	hddd mm. mmm'					
		South			East		
		Degrees (°)	Minutes	Seconds (')	Degrees	Minutes	Seconds (')
Kwando	Qhuqhumupa	18	14	411	23	29	976
Kwando	Qhuqhumupa	18	14	390	23	30	11
Kwando	Qhuqhumupa	18	14	391	23	30	41
Kwando	Qhuqhumupa	18	14	404	23	30	68
Kwando	Qhuqhumupa	18	14	429	23	30	73
Kwando	Qhuqhumupa	18	14	444	23	30	62
Kwando	Qhuqhumupa	18	14	470	23	30	52
Kwando	Qhuqhumupa	18	14	495	23	30	25
Kwando	Qhuqhumupa	18	14	506	23	30	17
Kwando	Qhuqhumupa	18	14	451	23	29	987

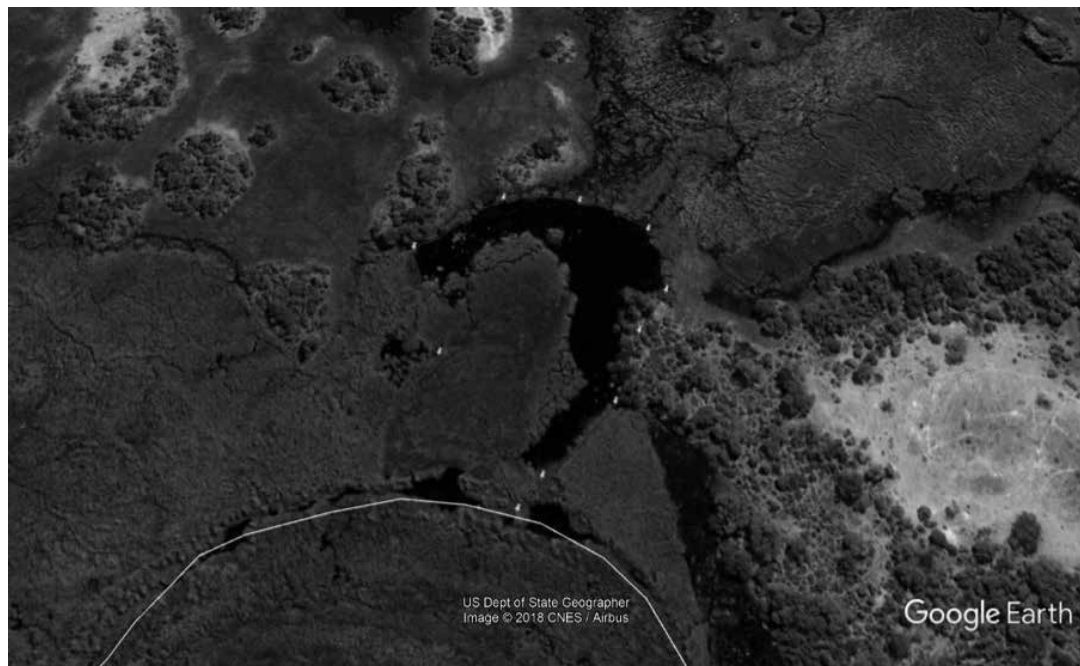


Figure 1: The boundary of the Qhuqhumupa Fisheries Reserve in the Balyerwa Conservancy, Kwando River. (Perimeter 0.6km) (© 2018 Google LLC).

2.2 GPS Coordinates and image of Kalume Fisheries Reserve

WGS 84 GPS units	Backwater	hddd mm. mmm'					
		South			East		
		Degrees (°)	Minutes	Seconds (')	Degrees	Minutes	Seconds (')
Kwando	Kalume	18	15	406	23	32	484
Kwando	Kalume	18	15	375	23	32	488
Kwando	Kalume	18	15	341	23	32	448
Kwando	Kalume	18	15	301	23	32	421
Kwando	Kalume	18	15	258	23	32	376
Kwando	Kalume	18	15	238	23	32	330
Kwando	Kalume	18	15	252	23	32	281
Kwando	Kalume	18	15	252	23	32	274
Kwando	Kalume	18	15	266	23	32	296
Kwando	Kalume	18	15	266	23	32	320
Kwando	Kalume	18	15	290	23	32	363
Kwando	Kalume	18	15	319	23	32	405
Kwando	Kalume	18	15	348	23	32	440
Kwando	Kalume	18	15	375	23	32	477

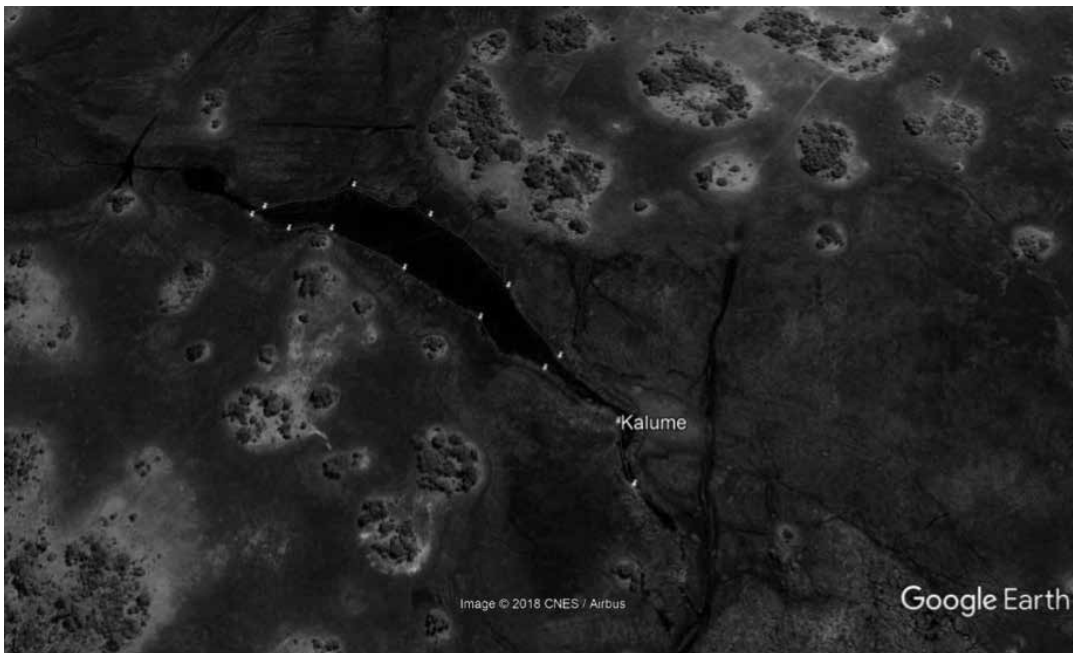


Figure 2: The boundary of the Kalume Fisheries Reserve in the Balyerwa Conservancy, Kwando River. (Perimeter 1.1km) (© 2018 Google LLC.).

3. **Specific fishing activities permitted in Qhuqhumupa and Kalume Fisheries Reserves and conditions applicable**

- (a) The management agreements drawn up for the Qhuqhumupa and Kalume Fisheries Reserves by the Balyerwa Conservancy in association with the Mayeyi Traditional Authority, the Ministry of Fisheries and Marine Resources and the Zambezi Regional Council in Katima Mulilo is formally recognised.
- (b) No fishing is allowed in the Qhuqhumupa and Kalume Fisheries Reserves.
- (c) No harvesting of plants, animals and sand is allowed in the Qhuqhumupa and Kalume Fisheries Reserves.
- (d) Catch and release of fish, for recreational purposes, is allowed but a person who intends to catch and release fish for recreational purposes must -
 - (i) be accompanied by a fish guard and a fish monitor; and
 - (ii) pay, to the Balyerwa Conservancy, a fee approved by the inland fisheries committee contemplated in section 29(1)(c) of the Act.
- (e) Patrols for management of the Qhuqhumupa and Kalume Fisheries Reserves will be made by conservancy tour guides, conservancy game guards and conservancy fish monitors, in close agreement with, and through cooperation with, the Ministry of Fisheries and Marine Resources. These patrols will be assisted by the Ministry of Fisheries and Marine Resources, by the Namibian Police and the Ministry of Environment and Tourism, when necessary.

MINISTRY OF FISHERIES AND MARINE RESOURCES

No. 67

2020

**DECLARATION OF AREA OF INLAND WATERS AS FISHERIES RESERVE: LWEZUBA
AND KABWEZA FISHING AREAS IN LUSESE CONSERVANCY: INLAND FISHERIES
RESOURCES ACT, 2003**

Under section 22(1) of the Inland Fisheries Resources Act, 2003 (Act No.1 of 2003), I, in response to an initiative of the Zambezi Regional Council and the Musubia Traditional Authority and in consultation with the Regional Council and that Traditional Authority, declare the Lwezuba and Kabweza fishing areas in the Lusese Conservancy as fisheries reserves more fully described in, and subject to the conditions set out in, the Schedule.

DR. A. KAWANA
ACTING MINISTER OF FISHERIES
AND MARINE RESOURCES

Windhoek, 22 February 2020

SCHEDULE

1. Description of Fisheries Reserves

- (1) The Lwezuba and Kabweza Fisheries Reserves fall within the Lusese Conservancy, the Lwezuba is always connected to the Kasaya River and has waterlilies and other aquatic plants.
- (2) Kabweza is not connected to any river system, but forms a pool during the low-water phase and gets flooded during the high-water phase. During the low-water phase it divides into two separate pools.

2. GPS coordinates and image of Fisheries Reserves

2.1 GPS Coordinates and image of Lwezuba Fisheries Reserve

System	Channel	GPS			East		
		South			Degrees	Minutes	Seconds
		Degrees (°)	Minutes (')	Seconds (")	Degrees	Minutes (')	Seconds (")
Zambezi	Lwezuba	17	42	23.16	24	46	26.4
Zambezi	Lwezuba	17	42	23.07	24	46	21.66
Zambezi	Lwezuba	17	42	23.59	24	46	17.81
Zambezi	Lwezuba	17	42	25.14	24	46	14.63
Zambezi	Lwezuba	17	42	27.38	24	46	10.66
Zambezi	Lwezuba	17	42	28.63	24	46	6.63
Zambezi	Lwezuba	17	42	26.99	24	46	3.59
Zambezi	Lwezuba	17	42	24.27	24	46	2.02
Zambezi	Lwezuba	17	42	20.49	24	46	0.39
Zambezi	Lwezuba	17	42	18.51	24	45	55.81
Zambezi	Lwezuba	17	42	16.92	24	45	52.45
Zambezi	Lwezuba	17	42	13.86	24	45	49.09
Zambezi	Lwezuba	17	42	10.21	24	45	44.61
Zambezi	Lwezuba	17	42	6.91	24	45	39.78
Zambezi	Lwezuba	17	42	10.79	24	45	38.27

Zambezi	Lwezuba	17	42	12.36	24	45	39.88
Zambezi	Lwezuba	17	42	13.60	24	45	41.07
Zambezi	Lwezuba	17	42	15.93	24	45	41.73
Zambezi	Lwezuba	17	42	17.57	24	45	44.39
Zambezi	Lwezuba	17	42	19.73	24	45	51.20
Zambezi	Lwezuba	17	42	21.48	24	45	56.81
Zambezi	Lwezuba	17	42	22.17	24	45	58.99
Zambezi	Lwezuba	17	42	24.75	24	45	58.90
Zambezi	Lwezuba	17	42	29.15	24	46	0.89
Zambezi	Lwezuba	17	42	31.03	24	46	5.03
Zambezi	Lwezuba	17	42	30.61	24	46	9.45
Zambezi	Lwezuba	17	42	29.83	24	46	12.32
Zambezi	Lwezuba	17	42	28.62	24	46	16.60
Zambezi	Lwezuba	17	42	26.72	24	46	20.57
Zambezi	Lwezuba	17	42	25.84	24	46	26.52

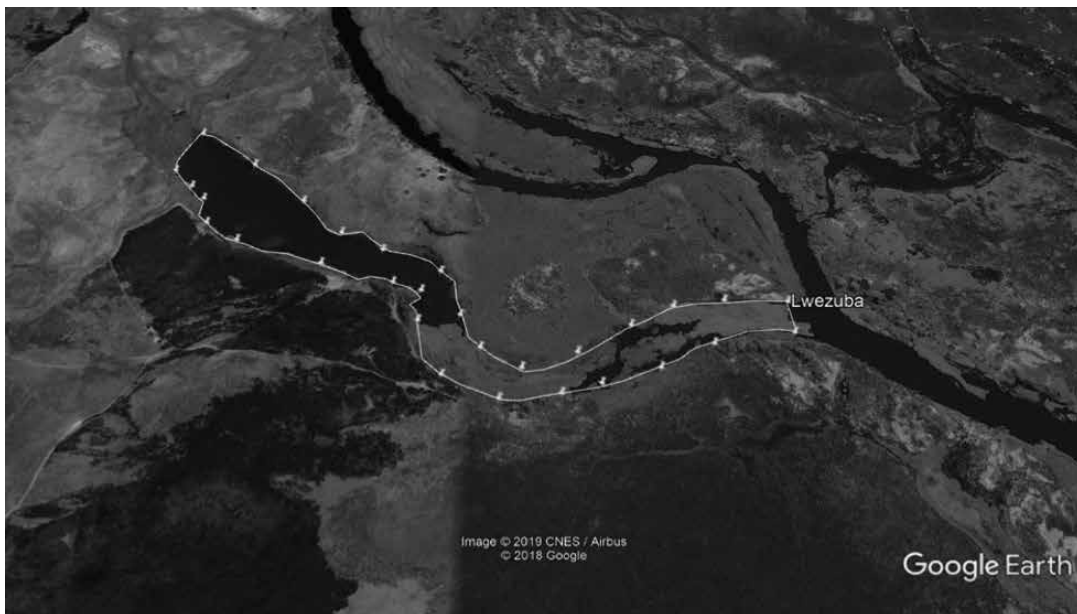


Figure 1: The boundary of the Lwezuba Fisheries Reserve in the Lusese Conservancy. (Perimeter 3.8km) (© 2018 Google LLC.).

2.2 GPS Coordinates and image of Kabweza Fisheries Reserve

System	Channel	GPS			East		
		South					
		Degrees (°)	Minutes (')	Seconds (")	Degrees	Minutes(')	Seconds (")
Zambezi	Kabweza	17	45	2.90	24	48	0.06
Zambezi	Kabweza	17	44	59.90	24	47	54.36
Zambezi	Kabweza	17	44	55.60	24	47	52.50
Zambezi	Kabweza	17	44	50.63	24	47	53.76
Zambezi	Kabweza	17	44	43.40	24	47	55.23
Zambezi	Kabweza	17	44	38.97	24	47	56.65
Zambezi	Kabweza	17	44	33.20	24	47	55.05
Zambezi	Kabweza	17	44	29.00	24	47	52.77

Zambezi	Kabweza	17	44	24.69	24	47	43.50
Zambezi	Kabweza	17	44	21.23	24	47	38.21
Zambezi	Kabweza	17	44	14.51	24	47	35.20
Zambezi	Kabweza	17	44	8.70	24	47	37.11
Zambezi	Kabweza	17	44	6.59	24	47	42.61
Zambezi	Kabweza	17	44	3.78	24	47	47.99
Zambezi	Kabweza	17	44	7.87	24	47	50.79
Zambezi	Kabweza	17	44	14.97	24	47	42.10
Zambezi	Kabweza	17	44	19.30	24	47	44.36
Zambezi	Kabweza	17	44	22.15	24	47	49.42
Zambezi	Kabweza	17	44	26.73	24	47	54.20
Zambezi	Kabweza	17	44	32.62	24	47	58.47
Zambezi	Kabweza	17	44	40.94	24	47	58.60
Zambezi	Kabweza	17	44	47.60	24	47	57.90
Zambezi	Kabweza	17	44	55.22	24	47	57.42
Zambezi	Kabweza	17	44	58.92	24	48	1.18



Figure 2: The boundary of the Kabweza Fisheries Reserve in the Lusese Conservancy. (Perimeter 4.9km) (© 2018 Google LLC.).

Specific fishing activities permitted in the Lwezuba and Kabweza Fisheries Reserves

3. These conditions are as follows -

- (a) a person may not -
 - (i) fish in the Lwezuba and Kabweza Fisheries Reserves, except for catch and release;
 - (ii) discharge any fire arms; and
 - (iii) harvest any aquatic vegetation, birds, animals, reeds or sand;

- (b) the management agreements drawn up for the Lwezuba and Kabweza Fisheries Reserves by the Lusese Conservancy in association with the Masubia Traditional Authority, the Ministry of Fisheries and Marine Resources and the Regional Council in Katima Mulilo are formally recognised;
- (c) an amount will be charged per person for recreational catch and release fishing as agreed between all stakeholders; and
- (d) harvesting will be done in November by the members with 3.5- and 4-inch multifilament gillnets and the dates of the harvest will be determined by the community.

MINISTRY OF FISHERIES AND MARINE RESOURCES

No. 68

2020

**DECLARATION OF MUNGA, NSALA AND MAKUMBI FISHING AREA AS FISHERIES
RESERVES: INLAND FISHERIES RESOURCES ACT, 2003**

Under section 22(1) of the Inland Fisheries Resources Act, 2003 (Act No.1 of 2003), in response to the written initiative of the Nakabolelwa Conservancy and in consultation with the Council and Traditional Authority, I declare the areas of inland waters of which the geographic boundaries are set out in the Schedule as fisheries reserves and the fishing activities permitted within the declared fisheries reserves are set out in the Schedule.

DR. A. KAWANA
ACTING MINISTER OF FISHERIES
AND MARINE RESOURCES

Windhoek, 22 February 2020

SCHEDULE

1. Description of boundaries of Munga, Nsala and Makumbi Fisheries Reserve

- (1) The Munga, Nsala and Makumbi Fisheries Reserves are fishing areas more fully described as indicated by their respective GPS coordinates and Figures 1, 2 and 3 set out in item 2(1), 2(2) and 2(3) respectively and both areas are within the borders of the Nakabolelwa Conservancy.
- (2) The Munga, Nsala and Makumbi area Fisheries Reserves, hereafter formally named the Fish Protection Area is an isolated pool during the low-water phase that connects with the Chobe River during the flooding season.
- (3) This area becomes an isolated pool during the low-water phase and during the high-water phase, the site is flooded and fish will freely move in and out of the area.

2. GPS Coordinates and images of fisheries reserves

(1) GPS coordinates and image for the Munga Fisheries Reserve

System		hddd mm. mmm'					
		South			East		
		Degrees (°)	Minutes	Seconds (')	Degrees	Minutes	Seconds (')
Chobe	Munga	17	50	690	24	50	113
Chobe	Munga	17	50	713	24	50	122
Chobe	Munga	17	50	650	24	50	180
Chobe	Munga	17	50	673	24	50	217
Chobe	Munga	17	50	678	24	50	234
Chobe	Munga	17	50	665	24	50	280
Chobe	Munga	17	50	662	24	50	316
Chobe	Munga	17	50	703	24	50	413
Chobe	Munga	17	50	717	24	50	436
Chobe	Munga	17	50	719	24	50	518
Chobe	Munga	17	50	664	24	50	567
Chobe	Munga	17	50	662	24	50	568
Chobe	Munga	17	50	681	24	50	573
Chobe	Munga	17	50	693	24	50	568
Chobe	Munga	17	50	716	24	50	547
Chobe	Munga	17	50	738	24	50	510
Chobe	Munga	17	50	754	24	50	441
Chobe	Munga	17	50	752	24	50	425
Chobe	Munga	17	50	730	24	50	402
Chobe	Munga	17	50	694	24	50	375
Chobe	Munga	17	50	679	24	50	332
Chobe	Munga	17	50	682	24	50	301
Chobe	Munga	17	50	679	24	50	280
Chobe	Munga	17	50	686	24	50	247
Chobe	Munga	17	50	690	24	50	231
Chobe	Munga	17	50	706	24	50	187
Chobe	Munga	17	50	715	24	50	158
Chobe	Munga	17	50	713	24	50	144

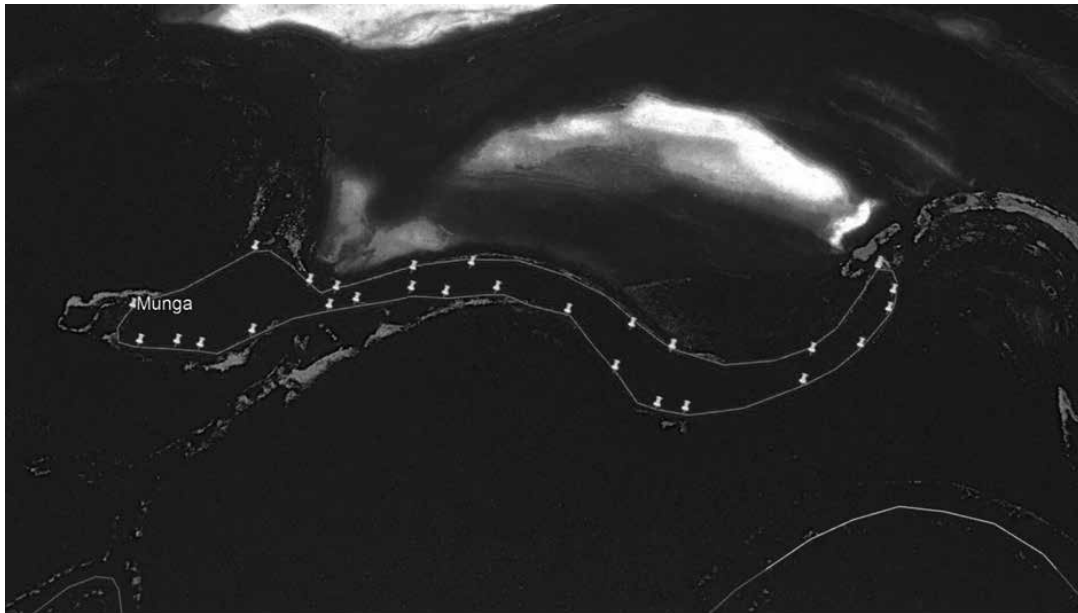


Figure 1: The boundary of the Munga Fisheries Reserve in the Nakabolelwa Conservancy, Chobe River. (Perimeter 1.98km) (© 2018 Google LLC.).

(2) GPS coordinates and image for Nsala Fisheries Reserve

System		hddd mm. mmm'					
		South			East		
		Degrees (°)	Minutes	Seconds (^o)	Degrees	Minutes	Seconds (^o)
Chobe	Nsala	17	50	691	24	51	331
Chobe	Nsala	17	50	670	24	51	361
Chobe	Nsala	17	50	662	24	51	382
Chobe	Nsala	17	50	657	24	51	426
Chobe	Nsala	17	50	661	24	51	452
Chobe	Nsala	17	50	678	24	51	510
Chobe	Nsala	17	50	674	24	51	537
Chobe	Nsala	17	50	666	24	51	566
Chobe	Nsala	17	50	680	24	51	585
Chobe	Nsala	17	50	687	24	51	544
Chobe	Nsala	17	50	713	24	51	497
Chobe	Nsala	17	50	721	24	51	480
Chobe	Nsala	17	50	708	24	51	462
Chobe	Nsala	17	50	697	24	51	438
Chobe	Nsala	17	50	685	24	51	386
Chobe	Nsala	17	50	678	24	51	373

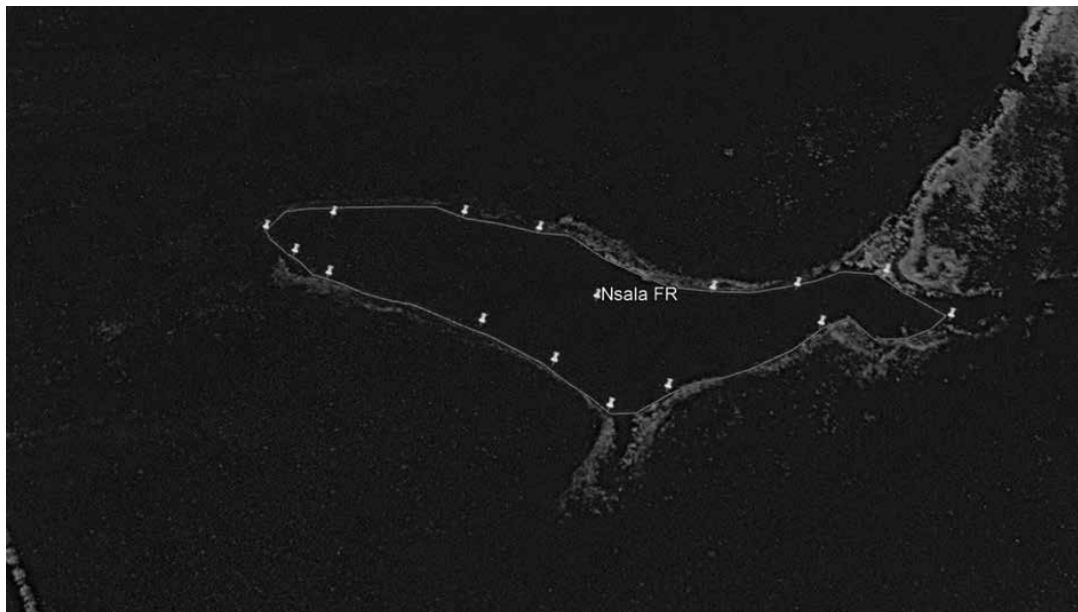


Figure 2: The boundary of the Nsala Fisheries Reserve in the Nakabolelwa Conservancy, Chobe River. (Perimeter 0.87km) (© 2018 Google LLC.).

(3) GPS coordinates and image for Makumbi Fisheries Reserve

System		hddd mm. mmm'					
		South			East		
		Degrees (°)	Minutes	Seconds (')	Degrees	Minutes	Seconds (')
Chobe	Makumbi	17	50	451	24	51	678
Chobe	Makumbi	17	50	432	24	51	678
Chobe	Makumbi	17	50	407	24	51	683
Chobe	Makumbi	17	50	388	24	51	690
Chobe	Makumbi	17	50	363	24	51	707
Chobe	Makumbi	17	50	344	24	51	737
Chobe	Makumbi	17	50	334	24	51	767
Chobe	Makumbi	17	50	335	24	51	803
Chobe	Makumbi	17	50	345	24	51	826
Chobe	Makumbi	17	50	356	24	51	843
Chobe	Makumbi	17	50	359	24	51	835
Chobe	Makumbi	17	50	353	24	51	808
Chobe	Makumbi	17	50	348	24	51	790
Chobe	Makumbi	17	50	352	24	51	747
Chobe	Makumbi	17	50	386	24	51	708
Chobe	Makumbi	17	50	433	24	51	682
Chobe	Makumbi	17	50	447	24	51	680

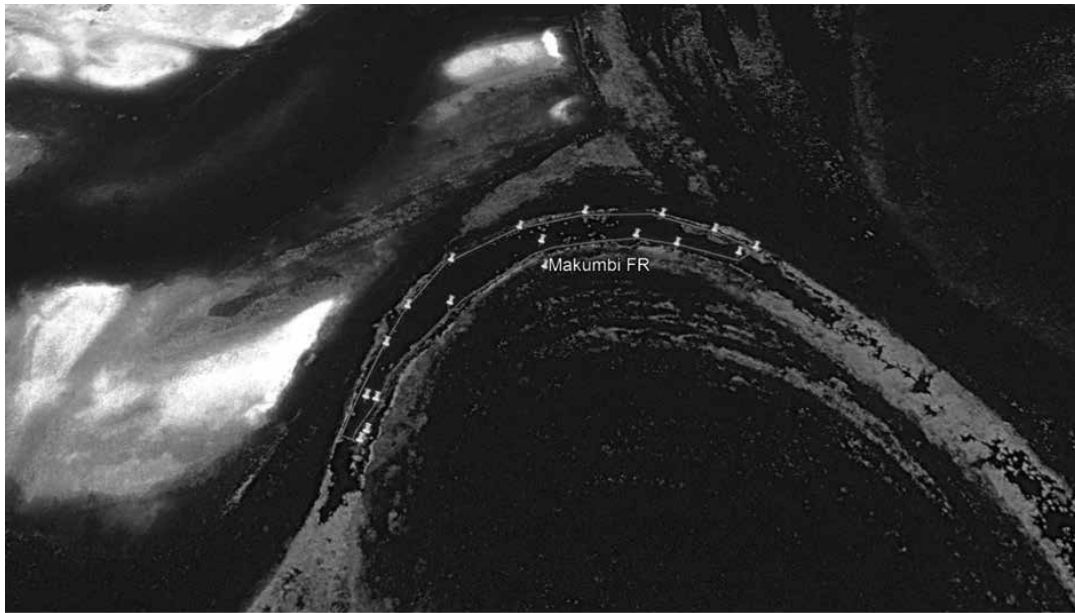


Figure 3: The boundary of the Makumbi Fisheries Reserve in the Nakabolelwa Conservancy, Chobe River. (Perimeter 0.86km) (© 2018 Google LLC.).

3. Specific fishing activities permitted in Munga, Nsala and Makumbi Fisheries Reserves and conditions applicable

- (1) The management agreements drawn up for the Munga, Nsala and Makumbi Fisheries Reserves by the Nakabolelwa Conservancy in association with the Bukalo Traditional Authority, the Ministry of Fisheries and Marine Resources and the Zambezi Regional Council in Katima Mulilo are formally recognised.
 - (2) A person may only practice catch and release when fishing in the Munga, Nsala and Makumbi Fisheries Reserves.
 - (3) An annual fee as prescribed in section 29(1)(c) of the Act is charged for catch and release fishing in the Munga, Nsala and Makumbi Fisheries Reserves.
 - (4) Members may only harvest in November and only 3.5 and 4-inch multifilament gillnets may be used which is decided by the IFC in consultation with the members.
 - (5) A person may not use netting or lights used to assist with fishing.
 - (6) Cattle are allowed to drink water at the Munga, Nsala and Makumbi Fisheries Reserves.
 - (7) A person is not allowed to harvest any aquatic vegetation, animal or sand from the Munga, Nsala and Makumbi Fisheries Reserves.
 - (8) Any other activity that may impact on the integrity of the ecosystem is not allowed.
-