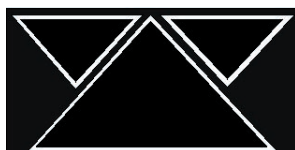


Eulikilombo lyOveta yElundululo lyEvi lyOkomikunda

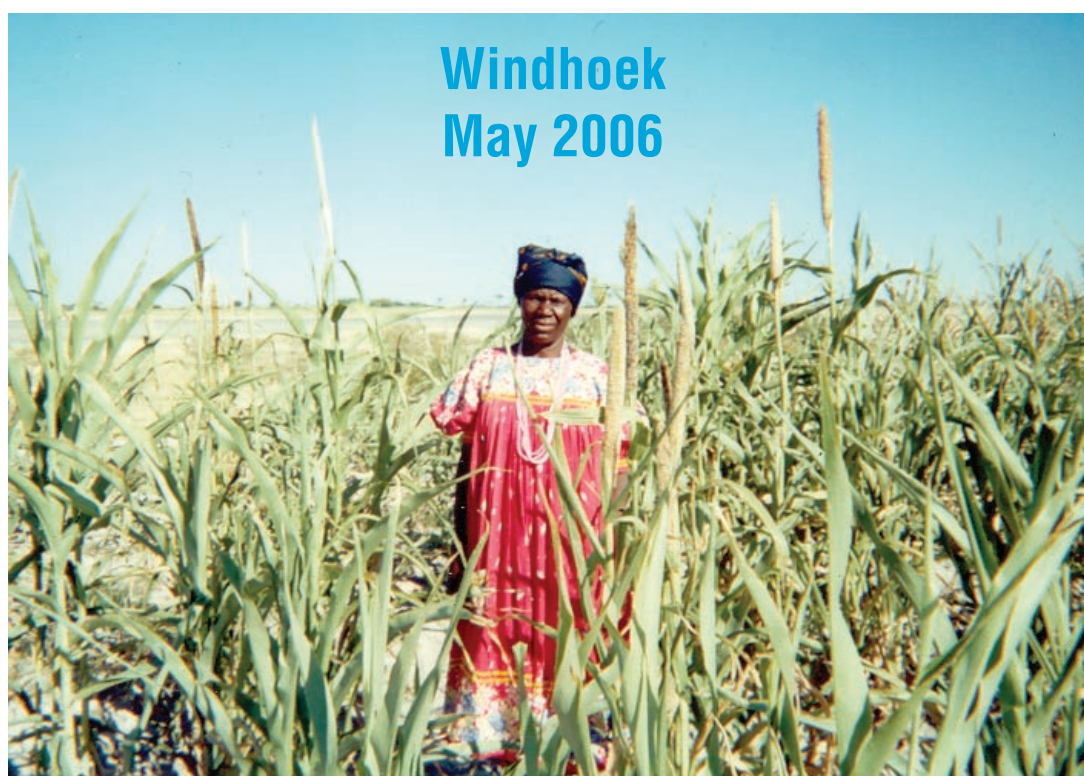
Oveta onti-5 yomumvo 2002

Oshiwambo



LAC

Land, Environment and Development Project
Legal Assistance Centre



Windhoek
May 2006

Eulikilombo lyOveta yElundululo lyEvi
lyOkomikunda

Oveta onti-5 yomumvo 2002

Land, Environment and Development Project
Legal Assistance Centre

Windhoek
May 2006

Eulikilombo lyOveta yElundululo lyEvi lyAayehe (lyOkomikunda)
Oveta onti-5 yomumvo 2003
Ethano lyokombanda: Meme Hilma Jonas e li mepya lye popepi nOndangwa.

Aanyanyangidhi: Legal Assistance Centre
P.O. Box 604
Windhoek
Namibia
Tel:061-2233356
Fax:061-234953
E-mail:info@lac.org.na

Lya nyolwa: Johann Malan
Omalongekidho gembo: Solitaire Press nancy@Solitaire.com.na
Etoloko mOshiwambo: Gustaf Tomanga
Omaleshululo opaleko: Victor Mutumbulwa

© Legal Assistance Centre

Embo ndika otali vulu okutalululwa oshali, okukutha mo sha, okopi nenge li fatululwe, oshitopolwa nenge alihe, shampa ashike oonzo tadhi simanekwa meudhililo.

Enyanyangidho lyotango, 2006

ISBN:99916-765-8-9

OMISHANGWA DHILI MEMBONDI

Omapandulo	v
Omafatululo giitya nomadhina	vii
Ondjokonona	xi
Efalomo	xv
Umwene wOmavi gOkomikunda/gaayehe	xvi
Evi lyaayehe oshike?	xvi
Olye mwene gwevi lyaayehe?	xvii
Omayoolokathano pokati kOveta nOntotwaveta	xviii
Ontopolwa I: litetekelinima	1
Oshitopolwa 1: Omayelithilo	1
Ontopolwa II: OOLAATA DHOMAVI GAAYEHE	2
Oshitopolwa 2: Etotepo lyOolaata dhOmavi gAayehe	2
Oshitopolwa 3: lilonga yOolaata dhOmavi gAayehe	2
Oshitopolwa 4: lilyo yOolaata	3
Oshitopolwa 7: Ilgongi yOlaata	4
Oshitopolwa 8: Uukomitiye	5
Oshitopolwa 9: Okuholola omaitulomo/omauwanawa moshinima	5
Oshitopolwa 10: Oondjambi (ofuto yiilyo yOlaata)	6
Oshitopolwa 11: Oshimaliwa shiilonga yOolaata	6
Oshitopolwa 12: Okulonga iilonga yopambeleva	6
Oshitopolwa 13: Omushangwahokololo gOkomumvo	6
Oshitopolwa 14: Engambeko okwaamonika epuko paumwene	6
Ontopolwa III: IITOPOLWA YOMOMAVI GAAYEHE	7
Oshitopolwa 15: Uunene wevi lyaayehe	7
Oshitopolwa 16: Etotepo lyiitopolwa iipe yevi lyaayehe nomagwedhelo ko nenge omakuthoko kiitopolwa yomavi gaayehe	7
Oshitopolwa 18: Okeelelo lyokudhika oondhalate/omankalo	9
Ontopolwa IV: EGANDJO LYOMAUTHEMBA GE NASHA NEVI LYAAYEHE	9
Oshitopolwa 19: Omauthemba ngoka tashi vulika ga gandjwe	9
Oshitopolwa 1- Omauthemba gevi pamuthigululwakalo oshowo omauthemba guulithilo	
Oshitopolwa 20: Oonkondo dhotango okugandja nokuhulitha po omauthemba gevi lyaayehe	9
Oshitopolwa 21: Oonkondo dhini Elenga nenge Elelo lyOpamuthigululwakalo li na uuna taku talwa eindilo?	10
Oshitopolwa 22: Omuntu ota vulu ngiini okuninga eindilo lyuuthemba wevi lyaayehe?	11
Oshitopolwa 23: Engambeko lyuuthemba wevi li niwe pamauthemba gevi lyopamuthigululwakalo	11
Oshitopolwa 24: Ekoleko lyegandjo lyomauthemba gevi lyopamuthigululwakalo	13
Oshitopolwa 25: Enyolitho lyuuthemba wevi lyopamuthigululwakalo	13
Oshitopolwa 26: Ehulithopo lyuuthemba wevi lyopamuthigululwakalo	15
Oshitopolwa 28: Etaambeko lyomauthemba gevi lyomauthigululwakalo ngoka ge niwe nale	16
Oshitopolwa 29: Omauthembo guulithilo	20
Oshitopolwa 2 – Uuthemba womukalo gokuhiila	
Oshitopolwa 30: Oonkondo okugandja uuthemba womukalo gokuhiila	22
Oshitopolwa 31: Eindilo lyuuthemba womukalo gokuhiila	23
Oshitopolwa 32: Omaukwatya ga uthwa ge nasha nuuthemba womukalo gokuhiila	24
Oshitopolwa 33: Enyolitho lyomauthemba gomukalo gokuhiila	26
Oshitopolwa 34: Uulethimbo wuuthemba womukalo gokuhiila	26
Oshitopolwa 35: Omauthemba ge niwe nale okukala mevi lyaayehe	27

Ontopolwa V: OMAUTHOMPANGO GAKWALUKEHE	31
Oshitopolwa 37: Omakonakono gopetameko geindilo lyuuthemba wu niwe nale	31
Oshitopolwa 38: Elundululilo lyomauthemba komuntu gulwe	34
Oshitopolwa 39: Omatalululo gwomaindilo	34
Oshitopolwa 40: Okufutilwa molwomapendulopo ga ningwa mevi/ehala	34
Oshitopolwa 41: Etalelokonakono lyevi lyaayehe	34
Oshitopolwa 42: Kape na iifuta uuna taku talwa eindilo lyuuthemba wevi lyopamuthigululwakalo	35
Oshitopolwa 43: Okukala mevi lyaayehe shaa li paveta	36
Oshitopolwa 44: Oondhalate/omankolo	36
Oshitopolwa 45: Oompango	37
Oshitopolwa 46: Ekuthopo lyooveta oonkulu	37
Oshitopolwa 47: Edhina lyOveta netameko lyayo	38
 Annexures	
Annexure 1: Elandulathano lyokuninga eindilo lyuuthemba wevi lyopamuthigululwakalo	41
Annexure 2: Elandulathano lyokuninga eindilo lyokutaambiwoko neinyolitho lyomauthemba gevi lyopamuthigululwakalo ngoka ge niwe nale	42
Annexure 3: Elandulathano lyokuninga eindilo lyuuthemba womukalo gokuhiila	43
Annexure 4: Elandulathano lyokuninga eindilo lyetaambiwoko lyomauthemba ge niwe nale okukala pevi lyaayehe oshowo egandjo lyuuthemba womukalo gokuhiila	44
 Omadhina noondjukithi dhomahangano	45
Oveta yElundululo lyEvi lyAayehe, Oveta onti-5 yomumvo 2002	
Oompango dha ningwa pamautho gOveta yElandululo lyEvi lyAayehe.	

Oontetekelihapu

Okuza pemanguluko momumvo 1990, etopolo lyevi nekondololo lyiitopolwa yokomikunda moNamibia oya kala ya yiwa moshipala kompumbwe yoveta ya yela nopauyuuki yi nasha nevi lyaayehe. Okugandja kAanamibia ompito okumona evi osha kala shimwe shomiilalakanenwa yotango yepangelo epe.

Ngaashi shi li iilongo mbyoka opo tayi putuka, Namibia okwa tula po oproholama yetopolulo lyevi, tayi lalakanene ethikithopamwe lyetopolo lyevi moshilongo ashihe. Kakele, osha yela kutya okumona ompito yevi kashishi ashike shampa aantu ya pewa evi y, ihe evi otali endeke pamwe noonkatu dhilwe okushilipaleka kutya evi olya longithwa nawa nokweeta po sha.

Iilonga yopetameko yokuvuta po Oveta yElundululo lyEvi lyAayehe oya tamekele momumvo 1995. Iigongiilonga oyindji, oosemina niigongi oya ningwa niyetwapo okuza kaakuthimbinga oya kwatelwa mengongo lyomukanda nguka. Okuza mpoka, opwa ningwa wo oonkundathana noompata kombinga yomukanda nguka mOmutumba gwOpashigwana oshowo mOlaata yOpashigwana shoka sha ka etitha po Oveta yElundululo lyEvi lyOkomikunda mesiku 1 Maalitsa 2003.

Oveta yElundululo lyEvi lyAayehe otayi ungaunga nokumona evi lyokomikunda miitopolwa yaayehe. Oveta otayi wilike egandjo lyomauthemba gevi oshowo etotepo lyOolaata dhOmavi gOkomikunda miitopolwa yaayehe ayihe moshilongo ashihe. Oveta otayi yelitha mo sha yela oonkondo dhOmalenga omanene, Omalelo gOpamuthigululwakalo nOlaata dhOmavi shi nasha negandjo lyomauthemba gevi miitopolwa yaayehe.

Oongundu dhopaali dhegandjo lyomauthemba gevi odha popiwa wo mOveta ndjika: omauthemba gevi gopamuthigululwakalo nomauthemba gokuhiila evi (okulongitha evi lyeangelo ihe kali shi yoye paumwene). Omauthemba ngoka taga gandjwa koho yongundu yotango ogo omauthemba ge nasha nomahala gokutunga omagumbo oshowo omauthemba gokulima omapya. Omalelo nenge Omalelo gOpamuthigululwakalo ohaga gandja omauthemba gevi lyopamuthigululwakalo, noolaata dhevi tadhi koleke evi ndyoka omanga omauthemba ngoka inaga tulwa miilonga paveta. Ongundu ontiyali lyomagandjo gomauthemba gevi, oyi nasha nomauthemba gokulongitha evi nomalalakano gopaunamapya, noshi li miikaha yOolaata dhEvi dhomiitopolwa mbyoka.

Etulomiilonga nawa lyOveta yElundululo lyEvi lyAayehe otali ka yambula po omapendulopo miitopolwa yokomikunda, omanga mokukokomoko guulethimbo tashi ka shilipaleka elongo lyoondja dha gwana kaantu yetu yomiitopolwa yaayehe oshowo oshilongo ashihe.

Onkee osha simana Oveta yi fatululwe momalaka gaavalelwamo opo aakwashigwana yoshilongo shetu ye yi uve ko. Otu uvitile uuntsa omahangano ngoka ga longitha ethimbo olindji nokuninga oonkambadhala okunyanyangidhitha embo ndika, notatu gandja eyambidhidho lyetu konkambadhala yawo ndjika.

Hifikepunye Pohamba
Oshilyo shoParliamende
Ominista yOmavi, Omatulululo nEzulonkalo

Omapandulo

Enyanyangido ndika olya zi mwaa ndjoka lya nyolwa moshiingilisha. Embo ndono lyo shiingilisha olya etwa po ko mbelewa oyo hai longo nomauthemba gaantu (Legal Assistance Centre) oshoyo ehanganano lyopashiwana lya nafaalama (Namibia National Farmers Union).

Enyanyangidho ndika olya fatululwa momalaka ngaashi, mo Shiherero, Oshilozzi, Rukwangali, Khoekhoegowab, Oshiwambo oshoyo Oshimbulu. Oprojeka yevi, omudhingoloko nomapendulopo (Land, Environment and development project) yo mombelewa ndjoka hai longo nomauthemba gaantu paveta (Legal Assistance Centre) oyo ya eta po efatululo lembo (Guide to the communal land reform act) ndika mo malaka ga yooloka go pa shigwana.

Enyanyangidho lyembo ndika olya kwa shilipalekwa noshimaliwa okuza ko Horizon 3000, EED osha yo ke hangano lina sha nou shitwe moshilongo (Namibia Nature Foundation). Ota tu pandula nee nghondo oma hangano ngaaka ke kwatho shipaleko lye mbo ndika.

Enyanyangidho lyo shiingilisha olya nyolwa ku Johann Malan no la fatululwa ku Gustav Tomanga. Victor Mutumbulwa okwa ningi omaleshululo opaleko.

Aakuthimbinga piigongiilonga oya konakona ngele eulikilombo ndika otali opalele ongoshilongitho piigongi yomapukululo ga ningwa moshilongo ashihe momumvo 2002 oshowo 2003. Aakuthimbinga mbaka okwa li ya kwatela mo aanafaalama yomomahala gaayehe, aakalelipo yomalelo gopamithigululwakalo, omahanganano getonatele lyuuntshitwe miitopolwa yokomikunda, aanambelewa yepangelo oshowo aanambelewa ya za komahanganano gayooloka ngoka inaga yama kepangelo. Mbaka oya longa oshipambu oshinene mokugandja iiyetwapo tayi tungu nomadhidhilo gawo shi nasha niikalimo yeulikilombo ndika.

Norman Tjombe, Clement Daniels, Dianne Hubbard oshowo Gerson Narib yoLegal Assistance Centre oya gandja wo iiyetwapothaneko yawo yongushu kevutopo lyotango yembo, oshowo Oloff Munjanu goNamibian National Farmers' Union. Otatu pandula ishewe omapulapulo ga ningwa kuRichard Diggle, Lucky Kasaona naJohn Kasaona yo Integrated Rural Development & Nature Conservation kombinga yiinima mbyoka tayi uthwa mOveta yElundululo lyEvi lyAayehe, nomayamukulo ngoka twi inekela kutya otaye ke ga mona meulikilombo ndika.

Legal Assistance Centre

Omafatululo giitya nomadhina

Etopolo	Okugandja nenge okupewa
Etopolo lyevi	Okugandja uuthemba komuntu a lumbe nenge a longe uunafaalama moshitopolwa shontumba shevi
Epotokununo	Okupotokonona oontamanana pokati kaantu pakulongitha omuntu omutitatu ngoka ti ithanwa omutopokononi, ngoka ta pulakene komahokololo gaantu ayehe ye li moontamanana, nokuninga etokolo moshinima. Etokolo lyomupotokononi oli na okwiuyuthwa koonakutamanana ayehe.
Evi lyopaipindi	Evi ndyoka hali vulu okulandwa nokulandithwa kaantu koohandimwe. Oshiholelwa ongashi ofaalama yopaipindi.
Oshinima shaayehe	Uulithilo waayehe wiimuna yaakwashigwana yoshitopolwa shontumba shopamuthigululwakalo.
Evi lyaayehe	Evi ndyoka li li eliko lyepangelo. Aakwashigwana itaya vulu okuninga ooyene yevi lyaayehe, ihe otashi vulika ya kale nomauthemba gevi gopamuthigululwakalo nenge omauthemba gokulongitha evi pakuthetha/ okuhiila shi nasha niitopolwa yontumba yevi.
Ekuyunguto lyomauwanawa	Uuna omuntu e na eitulomo lyomauwanawa gayooloka ngoka taga kondjithathana, ongele ta longo ongomunambeleva nenge paumwene. Oshiholelwa, oshilyo shOlaata yOmavi gAayehe otashi ka kala nekuyunguto lyeitulomo lyomauwanawa uuna e na okutokola shi nasha niinima ya guma ekuthoko lyevi pakutula ko enkolo/ondhalate pandondo ye yopaunambeleva ongoshilyo shOlaata, omanga ye (paumwene) a tula oshitunda shontumba mondhalate shoka a pewa pauthemba wevi lyopamuthigululwakalo.
Ombelewa yOmikanda dhooyene yomavi	Ndjika oyo ombelewa moka hamu pungulwa omikanda adhihe dhevi lyopaipindi. Omikanda dhooyene yomahala omo hamu monika kutya olye mwene goshitopolwa shontumba shevi, oshowo evi ofaalama nenge oplota yongandi moshilando nenge ondoolopa.
Okweetapo eindilo	Ngele omuntu okwa etha po eindilo, nena omuntu ngoka okwa talika ko ke na we ohokwe neindilo nenge a ekelahi eindilo.
Oplota/Ehala	Oplota evi moshilando nenge mondoolopa mpoka tapu vulu okutungwa egumbo.
Ekuthoko lyeliko/evi	Uuna uuthemba wokukala neliko tau kuthwa ko kEpangelo pwaa na eziminino lyamwene, ihe mwene ota futwa oshimaliwa shi li pauyuuki.
Uumwene wevi	Oludhi luumwene wevi mboka hau longithwa komunafalama okukala nevi lyopaipindi. Shika otashi ti kutya mwene gwevi ota vulu oku li landitha po nenge oku li longitha mokumona mo uuwanawa wontumba.
Elalakano ewanawa	Omuntu ta ningi sha nehalo ewanawa noku na uushili okulonga oshinima shontumba. Oshiholelwa, mengestrata ta ningi sha nehalo ewanawa uuna ta pulakene nuukeka kiitsa ayihe yoshiyotha shongandi nokuninga etokolo shi ikwatelela kiitsa mbyoka oshowo oveta.

Omushilipalekwa	Omuntu ngoka a pewa uuthemba okulongitha nenge okukala noshinima. Oshiholelwa, omuntu ngoka a shilipalekelwa uuthemba okulumba moshitopolwa shontumba shevi lyaayehe ota ithanwa 'omushilipalekwa.'
Efutulo lyopauyuuki	Ofuto ndjoka ya ningwa uuna eliko nenge omauthemba ga kuthwa ko kEpangelo. Ofuto ndjika oyi na okutala wo kongushu yelanditho lyoshinima shoka tashi kuthwa ko. Oshiholelwa, ngele epangelo tali kutha ko evi lyuunafaalama wopaipindi okugwedha komavi gaayehe, nena epangelo li na okufuta mwene gofaalama yopaindi ofuto yopauyuuki yeve ndyoka lya kuthwa ko.
Okuthetha/okuhiila evi	Okondalaka moka omuntu (omuhiilithi) ta pitikile omuntu gulwe (omuhiili) a longithe ehala/oshinima uule wethimbo lyontumba. Nakuhiila oku na okufuta oshimaliwa shokuhiila evi/ehala. Oshiholelwa, omuntu ota vulu okuhiilitha ofaalama ye.
Omukalo gokuhiilitha evi	Omukalo gumwe moka evi tali hiilithwa. Oshiholelwa, Olaata yOmavi gAayehe otayi gandja uuthemba wokuhiilitha evi komuntu pamautho ngoka tage mu pe uuthemba okulongitha evi nomalalakano ngoka evi lya hiilithwa.
Eshaino-shilipaleko	Uuna omuntu a hala okuhehela omukuli kombaanga, eshaino-shilipaleko otali shangithwa kofaalama nenge egumbo li ninge eshilipaleko lyombaanga. Shika okugandja egameno kombaanga molwiimaliwa mbyoka ye ku pa. Ngele omuntu ina ka vula we okufuta omukuli muule wethimbo lya tumbulwa, nena ombaanga otayi vulu okulanditha po eliko yi mone mo oshimaliwa shayo. Ngele omukuli ogwa pu okufutwa muule wethimbo lya tumbulwa, nena eshaino-shilipaleko olya pwa okufutwa, nombaanga kayi na we uuthemba okulanditha po evi/egumbo.
Mwene	Omuntu ngoka oye mwene gweliko, ngaashi mwene goongombe, oshihauto nenge egumbo.
Omakonakono gopetameko	Omakonakono okuutha iitsa yontumba omanga inaku ningwa etokolo. Oshiholelwa, ngele ope na omalimbililo kombinga yuuthemba mboka wu li po u nasha nokukala nevi, omakonakono gopetameko ohashi vulika ga ningwe okushilipaleka iitsa/omauyebele gwontumba omanga Olaata yOmavi yAayehe inayi tokola ngele otayi simaneke/taamba ko eindilo/epopyo nokunyolitha uuthemba wontumba.
Egandjo lyuuthemba tango kepangelo	Omavi agehe gopaunafaalama wopaipindi ngoka ge na okulandithwa oge na tango okugandjwa kOminista yOmavi, Omatulululo nEzulonkalo, ominista ndjoka tayi ka tokola ngele evi oli na okulandwa ko nomalalakano getopolululo lyeve. Ngele Ominista inayi hala okulanda ko evi, onzapo yokwaanehalo lyeve otayi gandjwa okupitika omunafaalama gopaipindi a landithe po evi ndyoka komulandi gulwe.
Eshilipaleko	Paenkalo dhehehelo lyoshimaliwa, eshilipaleko otashi ti kutya oshinima shontumba, ngaashi egumbo, ohali gandjwa ongeshilipaleko lyokufuta omukuli. Ngele omukuli inagu futwa, egumbo otali vulu okulandithwa po mu ze oshimaliwa shoka wa lya omukuli.
Evi lyepangelo	Evi ndyoka li li eliko lyepangelo. Shika osha uthwa mEkotampango.

- Emeto lyevi Okumeta oshitopolwa shontumba shevi okuutha mpoka pe na oongamba, uunene nomutungilo goshitopolwa. Evi lyopaipindi oli na okumetwa tango omanga inali landithwa po.
- Elongithonawa lyevi Elongithonawa otashi ti evi noonzo otadhi longithwa pamukalo ngoka tagu kandula po oompumbwe dhoshigwana pethimbo ndika, oshowo tadhi vulu oku ka longithwa komapupi gomonakuyiwa.
- Uukwatya wokukala nevi Uuthemba nenge omukalo moka eliko ngaashi evi li niwe. Paveta yElundululo lyEvi lyAayehe, evi lyaayehe otali vulu okukaliwa nalyo pauthemba wevi wopamuthigululwakalo nenge okukala nevi pakuhiila.
- Elelo lyOpamuthigululwakalo Elenga nenge mwenegwomukunda, omalenga omanenegopamuthigululwakalo nookapatashu otashi vulika ya hogololwe mElelo lyOpamuthigululwakalo Paveta yOmalelo gOpamuthigululwakalo.
- Oshigwana gOkomikunda Oshigwana shokomikunda osho oshigwana shoka tashi uthwa Paveta yOmalelo gOpamuthigululwakalo, Oveta yOnomola 25 yomumvo 2000. Efatululo lyoshigwana shokomikunda mOveta ndjoka olya kitakana, ihe otashi ti aakwashigwana yoshigwana shopamuthigululwakalo mboka haya popi elaka limwe, omuthigululwakalo gumwe, oohedhi nomikalo dhimwe ; ya simaneka elelo limwe lyopamuthigululwakalo nokulumba mehala limwe lyaayehe. Oshowo aantu mboka ye li pondje yoshitopolwa shaayehe ohashi vulika wo ya kwatelwe mo mefatululo lyoshigwana shokomikunda/ shopamuthigululwakalo.
- Okukala miikaha yepangelo Otatu ti kutya evi lyaayehe oli li miikaha yEpangelo, shoka tashi ti kutya Epangelo li na omauthemba gomavi ngoka gaayehe/gokomikunda noli na okulongitha evi ndyoka molwomauwanawa gaantu mboka taya lumbu mevi ndyoka.
- Omulandithi nomulandi ye na ehalo Ekankameno nkoka Epangelo tali vulu okumona/land ako evi lyopaipindi. Omulandithi oku na okukala nehalo okulanditha evi kondando yontumba nomulandi oku na okukala nehalo okulanda ko evi kondando ndjoka.

Ondjokonona

Okumona evi oshi li shimwe shomiinima yopankalathano mbyoka tayi thiminike noonkondo moNamibia. Evi lyopandoolopo oyo ehala moshilando nenge popepi nondoolopa. Aantu yamwe oya pumbwa evi lyuulithilo nenge lyomalalakano gopaunafaalama – aantu mbaka oya hala okumona 'evi' lyokomikunda. Oveta yElundululo lyEvi lyAayehe otayi ungaunga nokumona evi lyokomikunda miitopolwa yaayehe.

MoNamibia, evi oli li paengundu ongevi lyEpangelo, evi lyaayehe nenge evi lyopaipindi. Kehe yimwe yomoongundu dhika otayi gandja omauthemba niinakugwanithwapo kaantu mboka ye na omauthemba gevi. Omavi gomondoolopa nenge gokomikunda otashi vulika ga kale muyimwe yomoongundu dhika.

Evi lyEpangelo oyo evi ndyoka li li eliko lyEpangelo. Pakotampango, evi alihe, omeya noonzo dhopauntshitwe oyi li eliko lyEpangelo, okuninga shila ya kuthwa ko paveta kaantu paumwene. Ongamwene gwevi, Epangelo otali vulu okutokola shoka tashi vulu okuninga nevi – ongele okugwedha ko kiitopolwa yaayehe mbyoka yi li po nale nenge oku li landitha po li ninge evi lyopaipindi. Epangelo otali vulu okutokola okupitika aantu ya kale moshitopolwa shontumba shevi nenge oku li hiilitha, omanga natango oyo mwene gwevi.

Omavi gaayehe/gokomikunda oge li miikaha yEpangelo Pakotampango. Epangelo oli na oshinakugwanithwa okuwilika omavi gokomikunda omolwomauwanawa giigwana yokomikunda mbyoka tayi lumbu momavi ngoka, oshowo nelalakano okuhumitha komeho omapendulopo gomahupilo nonkalathano yoshigwana shaNamibia. Omavi gokomikunda ihaga vulu okulandithwa nenge okulandwa po.

Okatendo 100, mEkotampango lyaNamibia

Evi, omeya noonzo dhopauntshitwe dhi li kofi nokombanda ye, noshitopolwa shomeya oshowo oshitopolwa shemona shi ikalekelwa shaNamibia oyi na okukala eliko lyEpangelo, uuna kayi li nale miikaha yomuntu gwontumba paveta.

Omavi gopaipindi ogo omahala ngoka haga vulu okulandwa ko kaantu paumwene, mboka taya ningi ooyene ye. Pethimbo lyepangelo lyuukoloni, egandjo lyomavi gopaipindi okwa li hali ningwa pakatongotongo, shoka sha etitha pu kale omanyenyeto gethimbo ele shi nasha nomavi ngoka. Oveta yElundululo lyEvi lyOpaunamapya (Paipindi) yomumvo 1995 oya pitithwa okuungaunga nagamwe gomomaupyakadhi ngoka. Unene, Oveta ndjika otayi gandja kEpangelo uuthemba wompito yotango okulanda ko omavi guunafaalama wopaipindi uuna mwene a hala oku li landitha po. Epangelo oli na okutokola nenge oya hala okulanda evi/ofaalama yontumba omanga omunafalama ina vula oku yi landitha ko komulandi gulwe. Shika oshi ithanwa okulanda evi pamukalo gomulandithi nomalandi ye na ehala. Oveta otayi pitike Epangelo li kuthe ko evi lyopaipindi uuna evi ndika enene unene sha pitilila, nolya kala inali longithwa nenge kali niwe nalyo.



Omanga taku gamenwa uuthemba womuntu kehe okukala e na eliko lyopaumwene moNamibia, Ekotampango otali pitika Epangelo li kuthe ko eliko lyontumba pamalandulathano gopaveta, uuna shi li muuwanawa woshigwana nengele ofuto tayi gandjwa oyi li pauyuuki komuntu ngoka eliko lye tali landwa ko.

Momumvo 1998, ehololomadhiladhilo lyaanafaalama yokomikunda ya thinda kEgumbo lyEpangelo mOvenduka, taya pula uuthemba okumona evi.

Onkee epangelo otali vulu okulanda ko evi ngele evi otali ka longithwa nelalakano lyoshigwana. Oshiholelwa sholudhi nduka shokulanda ko, uuna epangelo tali kutha ko evi nelalakano okutunga po opate/ondjila.

Okatendo 16: Eliko, Ekotampango lyaNamibia

- (1) Aantu ayehe oye na uuthemba moshitopolwa kehe shaNamibia okumona, okukala nokulanditha po omaludhi agehe gomaliko inaga lunduluka naangoka haga lunduluka paumwene nenge pamuhanga nayakwawo nokuthigululitha omaliko gawo kaathigululi nenge mboka ye na uuthemba oku ga pewa: shampa ashike oveta yOparliamende tayi shi utha nenge tayi wilike uuthemba okumona eliko kwaantu mboka kaye shi aakwashigwana yaNamibia.
- (2) Epangelo nenge olutu nenge oshilyo shontumba sha uthwa paveta otashi vulu okulanda ko eliko molwuuwanawa woshigwana shampa ashike katu futwa ondando yi li pauyuuki, oshowo pamautho nomalandulathano taga wilikwa kOveta yOparliamende.

Oveta yElundululo lyOmavi gOpaipindi/Opaunamapya otayi ngameke wo okukala nuumwene wevi kaakwashigwana yiilongo yilwe, pakumona eziminino tango lyuuministeli okukala nomauthemba gevi.

Omukalo moka evi lyopaipindi tali wilikwa ogwa ngongwa mo nawa. Evi ohali metwa nawa nomaukwatya galyo ohaga pungulwa mombelewa yomaukwatya gooyene yomavi gopaipindi mOvenduka. Ombelewa onkwawo yi nasha nomaliko oyi li moRehoboth. Uuna ofalama nenge oplota tayi landwa, omalongekidho gelanditho oge na okunyolelwa momambo gomaukwatya gooyene yomavi. Shika oshi li uumbangi wuumwene wevi. Omathetitho/omahiilitho gomavi gopaipindi uule wethimbo lyontumba shi vulithe oomvula omulongo, nasho ohashi nyolelwa momambo ngoka. Ooyene yomaukwatya gomaliko oya manguluka okulanditha po omavi gawo shi ikwatelela komautho gomaukwatya guumwene womaliko. Oshiholelwa, ngele aantu yaali ohaya hokana mondjokana yeliko li li mumwe, Oveta yUuthikepamwe wAanandjokana Oveta yElundululo lyEnyolitho lyOmaliko otayi keelele elandithopo lyevi lyopaipindi komunandjokana gumwe awike pwaa na eziminino lyomunandjokana omukwawo.

Uumwene wevi lyopaipindi otashi vulika wu longithwe ongeshilipaleko kombaanga okumona omukuli. Monkalo yi li ngeyi, ombaanga otayi ka gandja omukuli kumwene gweliko, ihe ombaanga otayi ka nyola eshaino-shilipaleko lya kwatakanithwa keliko ndyoka. Shika otashi ti kutya ngele mwene gweliko ina ka vula we okufuta oshimaliwa shoka a pewa omukuli, nena ombaanga otayi vulu okulanditha po eliko yi futile po iimaliwa mbyoka inayi futwa.

Onkalo yi nasha nevi lyopaipindi oya yela nawa. Omulanduveta gOpashigwana gu nasha nEvi otagu ti:

“Oonkatu dha yela odha pumbwa okukatukwa okukutha po omalimbililo ge nasha nomaukwatya gopaveta nuuthemba wevi (lyokomikunda) oshowo omikalo dhoka evi (lyaayehe) tali wilikwa.”

Omalimbiliko ngaka oga za mompumbwe yoonkondo dhokuwilika omavi gaayehe oshowo onkandangala yoshinakugwanithwa shomalelo gopamuthigululwakalo (ngoka ge na oonkondo dhayooloka) shi nasha negandjo nelongitho lyevi. Miitopolwa oyindji, aanafaalama mboka aanene miitopolwa yaayehe oya tameka okutula iitopolwa yimwe momankolo /oondhalate kiitopolwa momavi gaayehe pwaa na epitiko lyopaveta, naashika ohashi li oshipungo aanafaalama mboka aashona miitopolwa mbika kaya mone omauthemba gokulongitha omahala ngoka. Okutula omavi gaayehe mondhalate kaanafaalama yokomikunda oshi li oshiholelwa shaantu taya longitha evi lyaayehe pwaa na okutala komauthemba gaanafaalama yakwawo. Omalelo gopamuthigululwakalo oge na na oonkondo oontshona okukutha ko oondhalate dhoka.

Oshizemo shegandjo lyuuthemba wevi lyopamuthigululwakalo otashi vulika shi kale sha yooloka kushoka sha pondolwa po mokugandja uukwatya wuumwene wevi lyopaipindi. Egandjo lyevi lyaayehe itali pitika egandjo lyuumwene kungoka e na uuthemba wokulongitha evi, kokutya eliko ndyoka itali vulu okulongithwa,

mokuninga eshilipaleko kombaanga molwomalalakano gokumona oshimaliwa. Ishewe, uukwatya wuumwene wevi lyopaipindi otau pe mwene uuthemba okulongitha oonzo dhopauntshitwe dhi li mevi lye (ngaashi okuyaha iinamwenyo), shoka itashi pitikwa kegandjo lyomauthemba gevi pamuthigululwakalo. Nomolwaashoka, Aanambia oyendji, oya tala ko omikalo nomavi gokomikunda kutya itadhi opalele.

Epangelo olya yamukula komukundu gwevi pakutota po Omulanduveta gOpashigwana gwEvi momumvo 1998, moka omukalo gwevi gopaukumwe gwa thanekwa. Kohi yomukalo nguka gopaukumwe, *“aakwashigwana ayehe oye na omauthemba gethikepamwe, oompito negameno shi nasha nuukwatya newiliko lyomikalo dhoka.”* Omukalo nguka gwa thanekwa otau ka shilipaleka kutya omaludhi agehe gomavi gokomikunda nomaukwatya gagwo oga talika ko shi thike pamwe nokugamenwa koveta, oshowo kutya evi lyaayehe otali wilikwa pamukalo gwa faathana. Omulanduveta gOpashigwana gwEvi otagu lalakanene wo okushilipaleka:

- Uuthikepamwe komeho goveta shi nasha nokumona evi.
- Kutya aakiintu oye na oonkatu dhi thike pamwe naalumentu shi nasha nomaludhi agehe gomauthemba gevi, kutya nee okoohandimwe nenge ongiilyo lyefamili. Shika otashi ti, pashiholelwa, kutya aakiintu oye na uuthemba okupewa evi, oshowo kutya otaya vulu okuthigulula evi nokugandja li thigululwe po. Sha simana unene, osho shoka kutya aaselekadhi oye na uuthemba okukaleka po omauthemba gevi ga kala po manga aasamane yawo ye na omwenyo. Shika otashi ka kala nedhenge pomutima shi nasha nooveta dhopashigwana nopamuthigululwakalo kombinga yuuthemba waakiintu shi nasha nevi, ooveta dhoka epangelo lya hala okulundulula.
- Uuthikepamwe okumona evi nuukwatya weshilipaleko.
- Elongithonawa lyomudhingoloko noonzo dhopauntshitwe, olya kwatela mo elongitho lyevi.

Omulanduveta gOpashigwana gwEvi ogwa simaneka omaludhi nomaukwatya gevi lyokomikunda:

- Uukwatya wuumwene wevi
- Oonzapo dhEzimino Okukala nEvi, hadhi gandjwa ngashingeyi kUuministeli wlitopolwa, Omalelo gOpaitopolwa nOmagumbo, dhoka tadhi ka hulithwa po Paveta ompe yElundululo lyEvi lyAayehe nokulundululilwa momauthemba gamukalo gokuhiila evi.



Meme Hilma Jonas e li mepya lye popepi nOndangwa. Aakiintu otaya ka kala nuuthemba okumona evi Paveta yElundululo lyEvi lyOkomikunda. Ethano kuNorman Tjombe.

- Omukalo gokuhiila evi. Uuthemba wokuhiila evi lyokomikunda otau ka gandjwa kOlaata dhOmavi gAayehe Paveta yElundululo lyEvi lyAayehe, ihe otashi ka ningwa paziminino lyElelo lyOpamuthigulukwalo ndyoka lya gumwa koshinima shoka.
- Egandja lyevi pamuthigululwakalo. Omanga taku uthwa kutya oonkondo dhotango dhokugandja omauthemba gevi pamuthigululwakalo shi nasha nevi lyaayehe otashi kala nElenga nenge Elelo lyOpamuthigululwakalo, Oveta yElundululo lyOmavi gOkomikunda otayi utha Olaata yOmavi gAayehe yi koleke omagandjo ngoka.
- Uumwene wEpangelo

Oveta yElundululo lyEvi lyAayehe otayi landula omaulikilo ngoka taga adhika mOmulanduveta gOpashigwana gwEvi. Oveta otayi yelitha mo iilonga yOmalenga, Omalelo gOpamuthigululwakalo nOolaata dhOmavi gOkomikunda shi nasha newiliko lyomavi gaayehe.

EFALOMO

Oveta yElundululo lyEvi lyAayehe otayi lalakanene okupendula po omukalo guukwatya wevi lyokomikunda pakutota po Oolaata dhOmavi gOkomikunda miitopolwa mbyoka yaayehe. Oolaata dhika otadhi ka kondolola egandjo nehulithopo lyomauthemba gevi pamuthigululwakalo kElenga nenge Elelo lyOpamuthigululwakalo lyoshitopolwa shontumba shokomikunda.

Sha simana, Oveta otayi pe aakiintu omauthemba gethike pamwe uuna taku ningwa eindilo lyomauthemba gevi lyokomikunda. Oshikwawo, oveta otayi gamene omuholike ngoka e li po gwanakusa ngoka a li e na uuthemba wevi pamuthigululwakalo wu pewe ngoka e li po, ngoka tashi vulika a kale omukulukadhi nenge omusamane, ano uuthemba okuninga eindilo kElenga nenge Elelo lyOpamuthigululwakalo okugandjulula uuthemba wevi pamuthigululwakalo wu ye kedhina lye.

Paveta yopamuthigululwakalo, aakiintu kaye na uuthemba okumona evi li shi nasha nomalalakano gawo yene, oshowo kaye na uuthemba okukala ye na omaliko gawo gopaumwene, kaa shishi ashike uunima mboka uushona wopaumwene mboka kau na ongushu. Aakiintu oya pitikwa okukala mepya nokulonga uunamapya mevi ashike molwaashoka epya okwa li lya pewa aasamane yawo, oohe nenge omulumentu gwezimo lyawo. Shika osha tula aakiintu monkalo ondhigu noonkondo.

Aakiintu oyendji oyi ikolelela kaasamana yawo oku ya sila oshimpwiyu, nonando otaya vulu okwiisila oshisho yoyene. Molwashoka aakiintu mbaka kaye na eithikamenopo lyoonzo pamahupilo niyemo, ihaya vulu okumona omauwanawa okuza moompito dhoka egulukila aakiintu mbaka ihaya lumbu paveta yopamuthigululwakalo. Oshiholelwa, aakiintu mbaka itaya vulu okumona elongo nenge okutembuka oshoka inayi ithikamena po yoyene painiwe. Itaya vulu ishewe okuninga omatokolo ge nasha noonkalamwenyo dhawo yene, ngaashi kutya uunake nenge aanona yangapi ye na okuvala. Okwaaneithikameno hoka okwa ninga aakiintu mbaka ya kale taya mono iihuna nomahepeko momagumbo, elongithonayi paihulo nokukwatwa koHIV/AIDS.

Okatendo okati-10 mEkotampango lyaNamibia otaka shilipaleke uuthikepamwe waantu ayehe komeho goveta, mwa kwatelwa aakiintu. Otaka keelele wo okatongotongo taka ningilwa aakiintu shi ikwatelela koludhi wawo lwopantu – okakwashike-ko-kantu. Kakele, aatotipo yEkotampango oya koneka kutya shika inashi gwana okuungaunga nokwaanuyuki kwa monika nale aakiintu iihuna. Onkee Ekotampango otali pitika wo ekatukonkatu tali tungu kombinga yepangelo okuungaunga nokatongotongo pankalathano, paliko nenge palongo hoka ka monitha nale aakiintu iihuna. Ngaashi, Okatendo 23 otaka ti kutya aakiintu oye na okukumikwa nokuyambidhidhwa ya dhane onkandangala yi ihwapo, yi thike pamwe notayi longo monkalamwenyo yoshigwana papolotika, pankalathano, paliko nopamuthigululwakalo.

Mokugandja uuthemba kaakiintu ya pewe evi lyokomikunda komadhina gawo yene, okukalal mepya konima yeso lyaasamane yawo, oshowo okutula aakiintu yane mOolaata dhOmavi gAayehe otashi ulike eitulomo lyepangelo okuhwepopaleka omuthika gwaakiintu moshigwana.

Oshitopolwa 17

- (1) Shi ikwatelela komautho gOveta ndjika, iitopolwa ayihe yomevi lyaayehe oyi li miikaha yEpangelo omolwomauwanawa giigwana yopamuthigululwakalo mbyoka yi li miitopolwa mbyoka oshowo nelalakano okupendula po omahumokomeho paliko nopankalathano goshigwana shaNamibia, unene mboka kaye na omahala/omavi oshowo mboka kaye na evi lya gwana mboka kaye na iilonga yopambelewa nengeyi itula miilonga kayi shi yuunangeshefa gopaunamapya.
- (2) Kape na uuthemba tau utha uumwene wevi tau vulu okugandjwa nenge okumonika komuntu kehe shi nasha noshitopolwa kehe shomevi lyaayehe.

Iholelwa yilwe yopaveta yeitulomo ndika ongaashi Oveta yUuthikepamwe wAanandjokana, Oveta ylinima yAaniilonga nOveta yEkutomilonga.

Aantu yamwe oye na omauthemba oku shi talela momavi gaayehe, omauthemba ngoka kwali ihaga gandjwa paveta yopamuthigululwakalo. Oshiholelwa sholudhi nduka womauthemba osho (Eziminino Okukala nEhala.) Oveta otayi hulitha po omukalo ngoka gu li pakulundululila omauthemba ngoka momauthemba gokuhiila evi.

Etulo lyevi moondhalate oshi li wo omukundu tagu ungaungwa nago kOveta. Paushili, etulo lyiitopolwa yaayehe moondhalate olya keelelwa, okuninga shila eziminino lya gandjwa okutula ko ondhalate, nenge ondhalate ndjoka yi li po oya pitikwa yi kale kevi ndyoka. Ompango onti-26 otayi pitike oondhalate dha kala po petameko lyOveta dhoka hadhi longithwa omankolo gomagumbo, iigunda yoongombe, omatemba gomeya giimuna nenge omapya ga kale po. Oolata dhOmavi gAayehe odhi na okutameka nokukaleka po omainyolitho ge nasha nomauthemba gomavi gopamuthigululwakalo nomauthemba wokuhiila omavi opo ku kondololwe egandjo nelongitho lyomavi gokomikunda.

Meulikilombo ndika, otatu ka kwatela mo iitopolwa yOveta, opo omuleshi a mone euvoko lya yela kombinga yoveta. Otwa gandja wo okopi yOveta konima yembo ndika opo omuleshi a vule okuyeleanitha eulikilombo nOveta notatu ende mo muyo.

i. Uumwene womavi gaayehe

Omanga inatu tameka niitopolwa yayooloka yOveta, osha simana okutala kutya evi lyaayehe oshike oshowo epulo li nasha nuumwene wevi lyokomikunda.

ii. Evi yaayehe oshike ?

Evi lyaayehe otali ndjandjukununwa moshitopolwa 15. Evi lyaayehe olya kwatela mo:

- litopolwa/omahala taga ndjandjukununwa ongomavi gaayehe moshitopolwa 1 shOveta.
- litopolwa kehe ya uthwa paveta okukala evi lyaayehe kohi yoshitopolwa 16 (1)(a).



Ompango 26 otayi pitika oondhalate dhoka dhi li po nale hadhi longithwa okukutha ko omagumbo, iigunda yoongombe, omatemba gomeya gokuuhila iimuna nenge omapya dhi kale po.

- Evi kehe lya kwatelwa moshitopolwa shevi lyaayehe pashitopolwa 16 (1)(b).
- Omahala gomalelo gopaendoolopa yi li moongamba dhoshitopolwa shevi lyaayehe kage li oshitopolwa shomavi gaayehe.

iii. Olye mwene gwevi lyaayehe ?

Oshitopolwa 17 otashi yelitha mo nawa kutya iitopolwa ayihe yevi lyaayehe oyi li miikaha nenge eliko lyEpangelo, ndyoka li na okulongitha evi ndyoka molwomauwanawa giigwana yopamuthigululwakalo mbyoka tayi lumbu miitopolwa mbyoka. Molwashoka evi lyaayehe eliko lyEpangelo, Epangelo oli na okutula po omikalo okushilipaleka kutya omavi gaayehe oga wilikwa nokondololwa shi nasha nomauwanawa gaantu mboka taya lumbu miitopolwa mbyoka. Oveta otayi shi ningi shika mokukwatela mo oombelewa dhOmalenga nenge Omalelo gOpamuthigululwakalo, oshowo okutota po Oolaata dhOmavi gAayehe dhoka tadhi ka longela kumwe okushilipaleka ewiliko ewanawa lyomavi gokomikunda.

Oveta otayi shi yelitha mo kutya omavi gaayehe ihaga vulu okulandithwa po nando komuntu ga ninge po gopaumwene. Shika otashi ti kutya omavi gaayehe ihaga vulu okulandithwa po ngaashi evi lyofalama yopaipindi.

Ongomutonateli gomavi gokomikunda, Epangelo oli na iinakugwanithwapo tayi landula shi nasha nomavi ngoka :

- Epangelo oli na okutonatela omavi gokomikunda nokuwilika omavi ngoka shi nasha nomauwanawa goshigwana.
- Epangelo oli na okukatuka onkatu pamukalo ngoka tagu eta po omauwanawa giigwana tayi lumbu miitopolwa yokomikunda. Kokutya, aantu mboka taya lumbu miitopolwa yaayehe oye na okumona omauwanawa okuza momavi gaayehe, ihe kashishi aantu yalwe.
- Etompelo kutya omolwashike Epangelo tali kaleke evi pamukalo ngoka olyo okupendula po ehumokomeho paliko nopankalathano lyoshigwana shaNamibia, unene iigwana mbyoka kayi na evi oshowo aantu mboka kaye na iiyemo yilwe, ihe oyi ikolelela ashike kevi omolwuhupilo wawo.



Aakiintu taya kokola epya moshitopolwahogololo Elim. Ethano kuAugustus Shikomba.

iv. Omayooloko pokati kOveta nOntotwaveta

Omanga inatu tameka noonkundathana dhOveta yElundululo lyEvi lyAayehe, osha simana okuuva ko shoka Oveta yOparliamende (nenge Oveta) paufupi kutya oshike lela. Oveta oyo ompango ndjoka tayi ungaunga noshikundathanwa shontumba. Ohayi wilike iinima ya guma oshikundathanwa shoka. Oshiholelwa, Oveta yElundululo lyEvi lyAayehe otayi wilike iinima ya pamba elundululo lyevi lyaayehe.

Ooveta ohadhi ningi oompango pamukalo tagu landul:

1. Ontotwaveta, ndjoka hayi ithanwa 'ethaneko lyoveta' ndyoka hali kundathanwa mOparliamende moka Omutumba gOpashigwana nOlaata yOpashigwana hayi yi moompata dhayo.
2. Uuna Omagumbo agehe gaali ge yi taamba ko, ohatu ti Ontotwaveta oya pitithwa mOparliamende.
3. Konima ngele Ontotwaveta oya pitithwa, ohayi tumwa kOmupresidende e yi shaine, nokonims ohayi ningi Oveta yOparliamende. Oveta aluhe hayi iyuthwa kuyo (nokutulwa miilonga paveta) ngele ya shainwa kOmupresidende, kakele Ooveta odhindji hadhi ti kutya otadhi ka tameka okuya miilonga mesiku tali ka tseyithwa mEmbo (Gazzete) lyEpangelo.

Gazzete yEpangelo enyanyangidho lyopamblewa moka hamu ningwa omatseyitho nomanyanyangidho goompango nomilanduveta omipe. Enyanyangidho mogazzete ohali ulike eholokepo lyoveta nokutseyithila oshigwana eholokepo lyayo.

ONTOPOLWA 1 IITETEKELINIMA

OSHIPOLWA 1: OMAYELITHILO

Oshitopolwa 1 shOveta yElundululo lyEvi lyAayehe omu na omayelithilo giitya ya longithwa mOveta. Ngele ino shilipalelwa eityo lyoshitya shontumba sha longithwa meulikilombo ndika, tala koshitopolwa shika u tale oshitya nkene tashi fatululwa mpaka. Otwa kwatela wo ishewe omafatululo komeho geulikilombo ndika.

Ngele Oveta otayi popi Olaata, nena okwa dhiladhilwa Olaata yOmavi gAayehe ngaashi tashi yelithwa mOveta, nOlaata yoshitopolwa osho oshitopolwa shoka shi li mewiliko lyOlaata ndjoka.

Elenga oye omuntu ngoka a taambiwa ko Paveta yOmalelo gOpamuthigululwakalo, Oveta yOnomola 25 yomumvo 2000, ongElenga lyoshigwana shontumba shopamuthigululwakalo.

Oshinima shaayehe ongaashi oshitopolwa shuulithilo wiimuna yaanamukunda yoshigwana shontumba shopamuthigululwakalo.

Oshitopolwa shaayehe shoshigwana shopamuthigululwakalo osho oshipambu shevi lyaayehe moka mu na aakwashigwana yomukunda ngoka.

Evi lyaayehe olyo oshitopolwa shevi tashi hokololwa mOshitopolwa 1 shOveta, iigwedhwapo kevi ndyoka oshowo ikuthwako kulyo, mbyoka ya tseyithwa kOmupresidende.

Omauthemba gopamuthigululwakalo ge nasha nevi oga kwatela mo omauthemba taga landula:

- Uuthemba wepya.
- Uuthemba wegumbo.
- Uuthemba wuukwatya woludhi kehe wopamuthigululwakalo mboka wa taambiwa ko nokuyelithwa kOminista moGazzete yEpangelo.

Epya oshitopolwa shevi sha gandjwa Paveta shi nasha nomalakano gopaunamapya. Epya oli na okukala nuunene mboka tau uthwa kOveta.

Omuhili oye omuntu ngoka a pewa uuthemba wokuhiila oshitopolwa shontumba shevi lyaayehe.

Uuna taku popiwa Ominista, otashi ti Ominista yOmavi, Etulululo nEzulonkalo.

Amushanga omukuluntu otashi ti Amushanga omukuluntu gUuministeli wOmavi, Etulululo nEzulonkalo.

Oshitopolwa osho shimwe shomiitopolwa yopapolotika 13 moNamibia ya taambiwa ko Paveta yOmalelo gOpaitopolwa, Onomola 22 yomumvo 1992.

Elelo lyOpashitopolwa olyo Elelo lya totwa po Paveta yOmalelo gOpaitopolwa ndjoka tali wilike oshitopolwa shoka.

Egumbo oshi li moshitopolwa shevi lya gandjwa Paveta shi nasha nomalakano gomalukalwa/omagumbo. Evi lyoshitopolwa shoka oli na okwiiyutha kuunene womahala gomalukalwa tau uthwa kOveta.

Uuthemba womukalo gokuhiila owo uuthemba wokulongitha oshitopolwa shevi lyaayehe Paveta ndjika.

Omunandjokana mwa kwatelwa aahokanathani (omusamane nomukulukadhi) mondjokana yopashigwana nenge omusamane nomukulukadhi mondjokana yopamuthigululwakalo, inaa ku talwa kondjokana yopamuthigululwakalo ya nyolithwa nenge inayi nyolithwa. Ondjokana nomalalakano gOveta ndjika oya kwatela mo oondjokana dhopaveta yopashigwana nopamuthigululwakalo.

Elelo lyOpamuthigululwakalo otashi ti aaleli yopamuthigululwakalo yoshigwana shontumba shopamuthigululwakalo mboka taambiwa ko ongaaleli yopamuthigululwakalo Paveta yOmalelo gOpamuthigululwakalo.

Oshigwana shopamuthigululwakalo oshi na eityo lya faathana noshigwana shokomikunda Paveta yOmalelo gOpamuthigululwakalo. Shika otashi ti aanamikunda mboka ye na elaka limwe, omuthigululwakalo, oohedhi nomithigululwakalo dha faathana. Oya taamba ko elelo limwe lyopamuthigululwakalo notaya lumbu moshitopolwa shimwe shaayehe. Aanamikunda mboka taya lumbu pondje yoshitopolwa shawo yaayehe natango oye li iilyo yoshigwana shoka shopamuthigululwakalo.

Ontopolwa II OOLAATA DHOMAVI GAAYEHE

OSHIPOLWA 2: ETOTEPO LYOLAATA DHOMAVI GAAYEHE

Oshitopolwa 2 otashi utha etotepo lyOolaata dhOmavi gAayehe kOminista. Ominista oyi na okutota po Oolaata dhOmavi gAayehe dhiitopolwa mbyoka, ihe okonima ashike yoonkundathana nOmalelo gOpamuthigululwakalo ngoka taga ka gumwa ketotepo lyOolaata dhOmavi gAayehe. Oolaata dhOmavi gAayehe otadhi vulu okukwatela mo:

- Oshitopolwa ashike moka mu na evi lyaayehe, pashiholelwa, Oshitopolwa ashike Omusati.
- Oshipambu shontumba shoshitopolwa shoka.
- litopolwa yontumba yomiitopolwa iyali nenge iitopolwa oyindji.

Ominista oyi na okuya mekwatathano nOmalelo gOpamuthigululwakalo ngoka ga gumwa uuna:

- ta toto po Olaata yEvi lyAayehe
- ta lundulula oongamba dhoshitopolwa shOlaata yEvi lyAayehe.

Omagameno:

- Ominista oyi na okunyanyangidha etotepo lyOolaata kehe yEvi lyAayehe oshowo oshitopolwa shiilonga yayo membo/oGazete yEpangelo.
- Omalunduluko agehe ge nasha noongamba dhoshitopolwa shOlaata yEvi lyAayehe oge na wo okunyanyangidhwa membo ndyoka.

OSHIPOLWA 3: IILONGA YOOLAATA DHOMAVI GAAYEHE

Oveta otayi yelitha mo iilonga yOolaata dhOmavi gAayehe. Oolaata dhOmavi gAayehe odhi na:

- Okukondolola egandjo nehulithopo lyomauthemba gevi lyopamuthigululwakalo kOmalenga nenge Omalelo gOpamuthigululwakalo
- Okutokola shi nasha nomaindilo gomauthemba gomukalo gokuhiila evi.

- Okutota po nokukaleka po omambo gegandjo lyevi, elundululo nehulithopo lyomauthemba gevi lyopamuthigululwakalo oshowo omauthemba gokuhiila evi.
- Okugandja omayele kOminista shi nasha noompango tadhi vulu okuningwa po okugwanitha po omalalakano gOveta.
- Okweenditha nawa omautho gOveta ndjika.

Oshitsa sha simana

Olaata dhOmavi gAayehe otadhi vulu ashike okuninga shoka tashi pitikwa kOveta dhi shi ninge. Oonkatu kehe dhoka inadhi pitikwa kOveta odhi li pondje yoonkondo dhOlaata, onkee oonkatu dhoka odha talika ko ka dhi na ongushu.

OSHIPOPOLWA 4: IILYO YOOLAATA

Oolye ye li iilyo yOlaata yEvi lyAayehe?

Olaata yEvi lyAayehe otayi ka thikama po miilyo tayi landula:

- Omukalelipo gumwe okuza mElelo kehe lyOpamuthigululwakalo moshitopolwa shoka tashi wilikwa kOlaata.
- Omunakunda gumwe e lile po oshigwana shaanamapya moshitopolwa tashi wilikwa kOlaata.
- Omunambelewa gopashitopolwa goshitopolwa/iitoplwa yontumba ya gumwa kOlaata yEvi lyAayehe.
- Aakiintu yane. Yaali naya kale aanamapya moshitopolwa tashi wilikwa kOlaata, nayaali oye na okukala mboka ye na owino miinima ya guma iilonga yolaata.
- Ngele moshitopolwa omu na ehanganano lyetonatelo lyuuntshitwe, omuntu gumwe na ulikwe kehangano ndyoka lyetonatelo lyuuntshitwe. Uuna pe na omahanganano getonatelo guuntshitwe gevulithe limwe moshitopolwa tashi wilika kOlaata, oye na okuulika pamuhanga oshilyo shi ya kalele po mOlaata.
- Iilyo ine yaanambeleva okuza kOkomisi ylilonga yEpangelo, tayi ulikwa:
 - kOminista yOmalelo gOpaitopolwa, Oondoolopa nOmagumbo.
 - Ominista yOmavi, Etulululo nEzulonkalo.
 - Ominista yUunamapya, Omeya nOmapendulopo gOmikunda.
 - Ominista yUtalelipo nOmidhingoloko.

Ominista oyi na okupula pamushangwa Ominista dhoka ne, Elelo/Omalelo gOpamuthigululwakalo nehangano/omahanganano getonatelo lyuuntshitwe ga gumwa ga hogolole aantu ye na okuulikwa mOlaata. Ngele Elelo lyOpamuthigululwakalo nenge ehanganano lyetonatelo lyuuntshitwe ngele oya ndopa okuhogolola omuntu, Ominista otashi vulika yi ulike omuntu ngoka ta opalele.

Iilyo yOlaata oyi na okuhogolola omunashipundi.

Iilyo yOlaata otayi longo ethimbo lyoomvula ndatu notashi vulika yi hogololulwe mOlaata pautho lyoshitopolwa oshiti-6. Kakele, iilyo otashi vulika yi kuthwe mo mOlaata pamaukwatya taga landula:

- Ngele oyi ikutha yoyene miilonga pamushangwa.
- Ngele oya kala itaya vulu we okoopalela okukala mombelewa. Oshiholelwa, ngele oshilyo osha ningi oshilyo shOmutumba gOpashigwana. (Tala mokakololo mepandja tali landula omolwomauyelel ga gwedhwa po.)
- Ngele oya ndopa okuholoka kiigongi yOlaata iikando itatu ya landulathana.



Elenga John Arnold, Elenga lyoshigwana !Kung moonkundathana naakwashigwana poAasvoelnes. Ethano koWIMSA.

- Ngele elelo lyawo ndyoka lye ya hogolola oya kutha mo moshilyo shalyo pamushangwa. Oshiholelwa, ngele ehanganano lyetonatelo lyuuntshitwe olya hogolola Lydia a ninge oshilyo shOlaata, ihe konima olya tokola kutya olya hala okukalelipo gulwe mOlaata, nena oli na okunyolela Ominista ombapila oku mu tseyithila elunduluko ndika.
- Ngele iilyo oya kala itayi vulu okulonga iilonga omolwuunkundi woondunge nenge palutu.

Ngele ehala lyiilonga olya holoka po, omuntu gumwe oku na okuulikwa a udhithe ehala uule wethimbo lyondyoka lya hupa ko lyoshilyo shoka sha za po okukala mombelewa.

Omunashipundi ohashi vulika a kuthwe onkatu ye uuna iitatu iyali yOlaata ya tokola kutya shoka nashi ningwe.

OSHIPOLWA 7: IIGONGI YOLAATA

Oshitopolwa shika otashi utha iigongi yOlaata noku tu tseyithila nkene Olaata yi na okuninga omatokolo nokulonga oshilonga shayo.

Ominista oku na okwiithana oshigongi shotango shOlaata yEvi lyAayehe. Okuza mpoka, Olaata oyi na okugongala oomwedhi mbali kehe. Iigongi yowina ohashi vulika yi ithanwe kOminista nenge omunashipundi, ngele Ominista oye shi zimina.

Oveta otayi gandja omaulikilo nkene iilyo oyindji yOlaata yi na okuholoka opo ku ningwe etokolo lyopaveta. Oveta otayi ti kutya omuyalu ogundji gwiilyo yOlaata oyi na okukala po opo omuyalu gwiilyo yi vule okuninga etokolo lyontumba.

Mboka itaya vulu okuninga iilyo yOlaata

Aantu taya landula itashi vulika ya ninge iilyo yOlaata yEvi lyAayehe:

- *Oshilyo shOmutumba gOpashigwana nenge Olaata yOpashigwana.*
- *Elenga.*
- *Omuntu a uthwa paveta kutya okwa mbangolota.*
- *Omuntu ngoka a monika ondjo moshikumuna nokupewa egeelo lyondholongo pwaa na ompito yeifutilemo.*

Omatokolo otaga ningwa pahogololo lyomawi ogendji. Kokutya, etokolo otali ningwa uuna iilyo oyindji ya hogolola okupopila etokolo ndyoka. Omunashipundi oku na ewi lyahugunina ngele inapu ningwa etokolo lyoyendji. Omunashipundi ota kwatele komeho iigongi. Uuna omunashipundi kee po, iilyo mbyoka ya holoka poshigongi otayi hogolola oshilyo shimwe shi ninge omunashipundi e nasha nomutumba ngoka.

Nezimino lyOminista, Olaata otashi vulika yi hiye aantu yaali ye na ontseyo nowino tayi opalele ya vule oku ya kwatha. Aantu mbaka kaye na ewi lyokuhogolola miigongi yOlaata.

Ompango 34 otayi yelitha mo iilonga ya-amushanga gOlaata. Omushanga oku na:

- Okulonga ongomunambeleva omukuluntu gOlaata.
- Okugandja omayakulo gopauhamushanga nokupungula omishangwa dhiikundathanwa (minutes) yiigongi.
- Okutula miilonga omatokolo gOlaata.
- Okutonatela aanambeleva yomoombeleva dhOlaata.

Omishangwa dhiikundathanwa (minutes) odhi na okunyolwa piigongi ayihe yOlaata yEvi lyAayehe.

OSHIPOLWA 8: UUKOMITIYE

Omalelo gOmavi gAayehe otashi vulika ga tote po uukomitiye wa thikama po miilyo yOlaata okugandja omayele kOlaata shi nasha niinima yontumba.

OSHIPOLWA 9: OKUHOLOLA PAMBELEWA OMAITULOMO MIINIMA YILWE

Elalakano lyoshitopolwa shika okugamena Olaata oshowo aantu ngoka ye li moshitopolwa tashi wilikwa kOlaata kaa ya mone enwethomo lyoshilyo shOlaata shoka shi na eitulomo miinima yilwe yontumba.

Uuna oshilyo shi na eitulomo moshinima shontumba shoka tashi kundathanwa kOlaata nenge okakomitiye, nena oshilyo shoka oshi na okuholola pambelewa eitulomo lyasho nokuthiga po oshigongi, opo iilyo iikwawo yi vule okutokola ngele ope na ekondjithathano lyeitulomo/uuwanawa wontumba. Ngele oya tokola kutya ope na ekondjithathano lyeitulomo, oshilyo shoka itashi pitikwa shi kuthe ombinga moonkundathana.

Ngele osha holoka kutya omuntu ngoka ina holola eitulomo lye pethimbo lyoonkundathana shoshinima shontumba, etokolo lyOlaata nenge okakomitiye itali kala nongushu noye na ihe okutalulula etokolo ku talike ngele olya nwethwa mo koshilyo shoka kwa li shi na mo omauwanawa/eitulomo moshinima. Okwaaholola eitulomo lyoshiningilawina oshi li eyono hali geelwa paveta N\$8 000 nenge oomvula mbali mokakuma nenge oimageelo agehe.

Oshiholelwa:

Ekondjithathano lyeitulomo/uuwanawa

Olaata oyi na okutokola shoka yi na okuninga po kombinga yoondhalate dhoka dha tulwa komavi gaayehe pwa na eziminino. Elifas okwa tula ondhalate kofalama ye yoohekita 2000, ndjoka yi li moshitopolwa shaayehe. Elifas oku li wo oshilyo shOlaata yEvi lyAayehe.

Osha yela kutya Elifas oku na mo eitulomo moshinima omolwondhalate ndjoka a tula kofalama ye. Etokolo lyOlaata otali ka guma enkolo/ondhalate ye.

Elifas oku na okuholola pambelewa eitulomo lye moshinima, kutya oku na ofalama yi li mondhalate, nokuza moshigongi opo Olaata yi vule okuninga ekotokolo moshinima shoka.

OSHIPOLWA 10: OFUTO (ONDJAMBI YIILYO YOLAATA)

Iilyo yOlaata mbyoka ihayi longele epangelo omayakulo gawo otaga ka futwa. Ominista otayi ka tokola kutya iimaliwa yawo otayi ka kala ingapi. Iimaliwa otashi vulika yi yooloke shi ikwatelela koonkatu dhiilyo mOlaata. Oshiholelwa, omunashipundi otashi vulika a mone oshimaliwa oshindji e vulithe iilyo iikwawo yOlaata.

OSHIPOLWA 11: IIMALIWA YOOLAATA

Oolaata dhOmavi gAayehe otadhi ka mona oshimaliwa kOparliamende shi nasha nelalakano ndika.

OSHIPOLWA 12: IILONGA YOPAMBELEWA

Iilonga yopambeleva yOolaata dhOmavi gAayehe otayi ka longwa kaaniilonga yEpangelo, taga tulwa po kuAmushanga omukuluntu kUuministeli wOmavi, Etulululo nEzulonkalo nenge aaniilonga yOlaata yOpashitopolwa. Amushanga omukuluntu nenge Olaata yOpashitopolwa oyi na okuulika amushanga gOlaata.

OSHIPOLWA 13: OMUSHANGWAHOKOLOLO GOKOMUMVO

Oolaata dhOmavi gAayehe odhi na okungonga po omishangwahokololo dhi nasha niilonga yadho yomumvo kehe nokugandja omishangwahokololo kUuministeli wOmavi, Etulululo nEzulonkalo omasiku manga inaga konda 31 Januari omvula kehe. Ominista oyi na okugandja ookopi dhomishangwahokololo dhoka noku dhi tseyitha mOmutumba gOpashigwana muule womasiku 28 sho e dhi mono okuza koolaata dhoka.

Elalakano olyashike okutseyitha omishangwahokololo dhokomvula mOmutumba gOpashigwana?

Okutseyitha omishangwahokololo otashi pitike epangelo:

- *li mone ngele Oolaata dhOmavi gAayehe otashi longo iinakugwanithwa yadho.*
- *li mone ngele iimaliwa yoshigwana oya longithwa nawa.*
- *li mone mone ngele elundululo lyevi lyekomikunda otali ningwa okupitila miilonga yOolaata dhOmavi gAayehe, oshowo*
- *okupendula po iilonga inayi futama, uudemokoli, newiliko ewanawa pakuyelithila oshigwana shi nasha niinima ya guma Oolaata dhOmavi gAayehe.*

OSHIPOLWA 14: ENGAMBEKO OKUTSIKWA OMUTENGI UUNA PWA HOLOKA SHA INASHI OPALA

Omalenga, Omalelo gOpamuthigululwakalo niilyo yOolaata dhOmavi gAayehe kaye na oshinakugwanithwa shepuko paumwene lya holoka po nelalakano ewanawa/uushili mokugwanitha po iilonga yawo Paveta ndjika.

Omolvashike engambeko lyopaumwene tali ningwa?

Oshinakugwanithwa shopaumwene otashi tse atuhe oku na oshimpwiyu shoonkatu kehe tatu katuka/ningi. Oshiholelwa, ngele Petrus okwa etitha oshiponga noshihauto she, nena oku na oshinakugwanithwa shomayonauko ga ningilwa oshihauto shamukwawo. Osha faathana, tse otu na oshimpwiyu shomatokolo getu notu na okupulwa uuna pwa holoka sha.

Onkee, molwashoka Elenga, Elelo lyOpamuthigululwakalo nenge iilyo yOlaata yEvi lyAayehe otaya longo oshilonga shopambeleva, oye na okupulwa ashike pamithika dhawo dhopambeleva ihe kashishi paumwene. Engambeko lyoshimpwiyu shopaumwene otali shilipaleke kutya aantu otaya vulu okulonga iilonga yawo nawa oshoka yo kaye na,

okulimbililwa shi nasha nokukwatelwa mepuko paumwene lya holoka po omanga taya longo iilonga yawo yopambeleva. Oshiholelwa, Rosalia, ngoka e li oshilyo shOlaata ita pewa epuko lyopaumwene ngele okwa li hingi ohauto yOlaata sho a ningi oshiponga ngele okwa li miilonga yopambeleva. Olaata oyo tayi ka sa oshimpwiyu.

Engambeko lyokwaakwatelwa mepuko paumwene oshi ikwatelela kokulonga kwaanambeleva paushili. Niitya yimwe, iilyo yOlaata inayi kala olwaamaminga uuna tayi tokola iinima noye na okutokola iinima konima yokutala komauyelele agehe. lilyo oyi na wo okukala tayi vulu okugandja omatompelelo gomatokolo ngoka ya ninga.

Ontopolwa III IITOPOLWA YEVI LYAAYEHE

OSHIPOLWA 15: UUNENE WEVI LYOKOMIKUNDA

Oshitopolwa 15 otashi yelitha mo kutya omahala ge li oshitopolwa shevi lyaayehe ngaashi tashi uthwa moshitopolwa 1 shOveta.

OSHIPOLWA 16: ETOTE PO LYOMAHALA OMAPE GEVI LYAAYEHE OSHOWO OMAGWEDHOKO NENGE OMAKUTHOKO KIITOPOLWA YEVI LYAAYEHE.

Pashitopolwa 16, neziminino lyOmutumba gwOpashigwana, Omupresidende otashi vulika a tseyithe paveta:

- evi kehe lyEpangelo li ninge evi lyaayehe,
- okugwedha ko kevi kehe lyEpangelo koshitopolwa shevi lyaayehe ndyoka li li po nale, nenge
- okukutha ko oshitopolwa shontumba kevi lyaayehe shampa ashike kutya Epangelo olya:
 - mona omauthemba kaantu ayehe ya gumwa kekuthoko lyevi (ngaashi omauthemba gevi lyopamuthigululwakalo nomauthemba gokuhiila evi), oshowo
 - okufuta oshimaliwa shi li pauyuuki shi nasha nomauthemba ngoka.

Ngele evi tali kuthwa ko otali ningi evi lyEpangelo notali vulu okugandjwa po ongevi lyEpangelo.

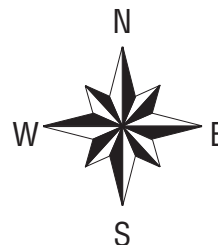
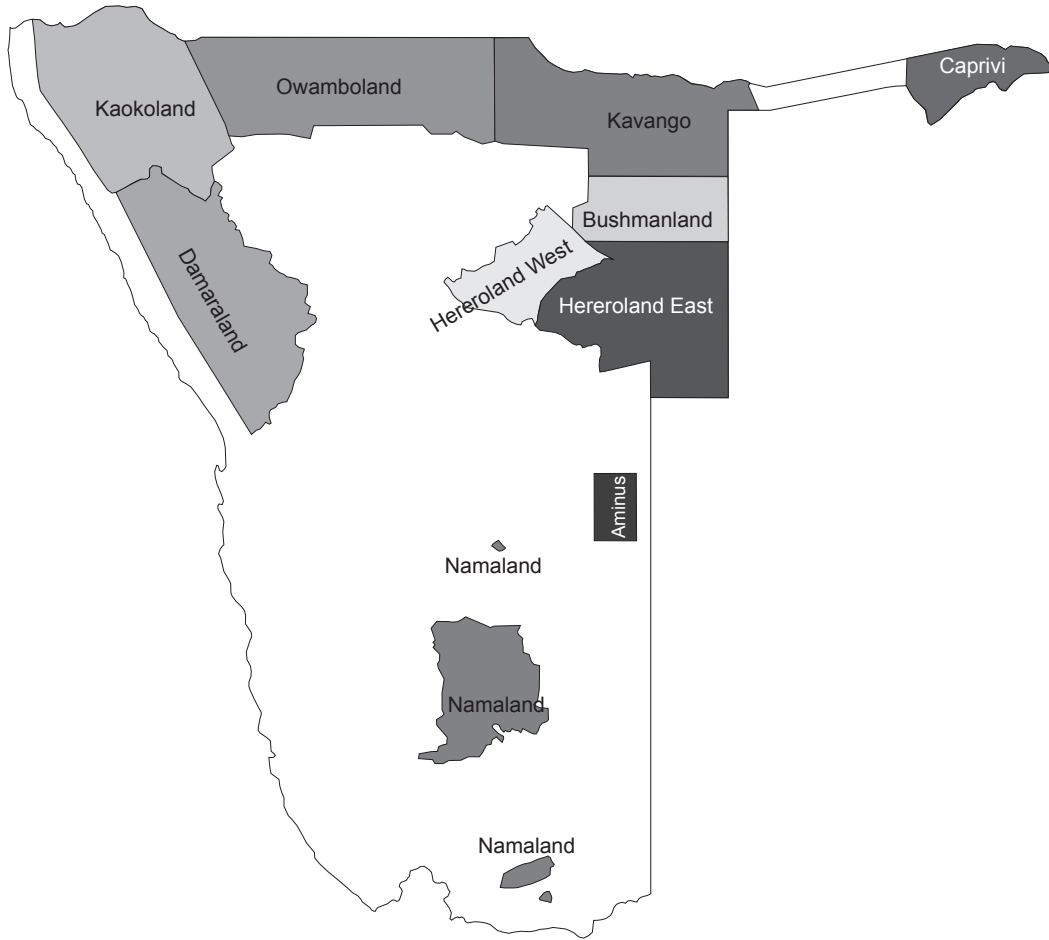
Ondando yeve otashi vulika yi uthwe ketsokumweuvathano pokati komuntu ngoka e na omauthemba galyo, nOminista nenge papotokonono ngaashi tashi uthwa kOveta yEpotokonono lyomavi yomumvo 1965.

Uuna evi epe lyaayehe tali totwa po, tali gwedhelwa nenge tali kuthwa ko, omalunduluko oge na okuningwa Pashitopolwa 1 shOveta.



Etulo lyiitopolwa yomavi gaayehe mondhalate otashi ka kondololwa ngashingeyi kOolaata dhOmavi gAayehe. Ethano koNNFU.

IITOPOLWA YAAYEHE MONAMIBIA



OSHIPOOLWA 18: EKEELELO LYOONDHALATE

Oveta oya katuka onkatu okukeelela edhiko lyomankolo noondhalate komavi gaayehe. Kape na we omankolo noondhalate oompe tathi dhikwa pwa na eutho ngaashi tashi yelithwa kOveta. Oshowo, oondhalate dhoka dha kala po nale pethimbo Oveta ndjika tayi yi miilonga odhi na okukuthwa ko, okuninga shila aantu mboka ya dhika po oondhalate dhoka ya pula nokupewa eziminino okukaleka po oondhalate dhoka kevi ndyoka. Shi nasha nomalalakano goshitopolwa shika, Oveta oya tulilwe miilonga esiku 1 Maalitsa 2003. (Tala Etseyitho lyEpangelo lyOnomola 34 lyomumvo 2003.) Shika otashi ti kutya okuza esiku 1 Maalitsa 2003, kape na oondhalate oompe tathi ka dhikwa po, nomankolo/oondhalate ngoka ga kala po otashi vulika ashike ga kalekwe po uuna euthoziminino lya pulwa nokugandjwa Paveta ndjika.

Tala iitopolwa 28 oshowo 35 omolwomauelele nkene taku ningwa eindilo lyeziminino okukaleka po ondhalate/enkolo li po nale.

ONTOPOLWA IV EGANDJO LYOMAUTHEMBA SHI NASHA NEVI LYAAYEHE

OSHIPOOLWA 19: OMAUTHEMBA NGOKA TASHI VULIKA GA GANDJWE

Omauthemba taga landula otashi vulika ga gandjwe (pitikwe) Paveta:

- Omauthemba gevi pamuthigululwakalo, ngoka ga kwatela mo omauthemba taga landula (tala oshitopolwa 21):
 - uuthemba woshipambu shepya
 - uuthemba woshipambu shokudhika egumbo
 - uuthemba wuukwatya woludhi kehe pamuthigululwakalo mboka wa taambiwa ko nokuyelithwa kOminista moGazzete yEpangelo.
- Omauthemba womukalo gokuhiila evi.

Uuthemba wuukwatya woludhi kehe pamuthigululwakalo otashi ti ngiini?

Pethimbo ndika, Oveta oya taamba ko ashike omaludhi gopaali gomauthemba gevi pamuthigululwakalo, ngaashi uuthemba okukala noshitopolwa moka omuntu ta longo uunamapya (oshitopolwa shepya) oshowo oshitopolwa moka omuntu ta vulu okutunga egumbo lye (oshitopolwa sholukalwa/egumbo).

Otashi ka vulika kutya monakuyiwa omauthemba ngoka goshitopolwa shepya noshitopolwa shegumbo yi kale inayi gwanena omolwomalalakano agehe gokulongitha evi, unene ngele taku talwa kiinakugwanithwa po yelongitho lyevi kiigwana yayooloka yopamuthigululwakalo moNamibia. Onkee Oveta otayi pitike Ominista yi yulululeko komupaya/yi talulule po okutaamba ko nokuutha omauthemba galwe ge nasha nomaludhi galwe gomaukwatya gopamuthigululwakalo monakuyiwa.

OSHIPOOLWA 1: OMAUTHEMBA GEVI NUULITHILO WOPAMUTHIGULULWAKALO

OSHIPOOLWA 20: OONKONDO DHOTANGO OKUGANDJA NOKUHULITHA PO OMAUTHEMBA GEVI PAMUTHIGULULWAKALO

Elengalyoshigwanashopamuthigululwakalo, nenge ngele Elenge oshotali tokola, Elelo lyOpamuthigululwakalo lyoshigwana shontumba, oli na oonkondo dhotango okugandja nenge okuhulitha po omauthemba gevi pamuthigululwakalo. Shika otashi ti kutya Elenga nenge Elelo lyOpamuthigululwakalo tango oli na okutokola ngele otali, gandja uuthemba wevi pamuthigululwakalo keindilo nenge aawe. Uuna ashike etokolo ndika lya ningwa opo oshinima/eindilo tali vulu okutumwa kOlaata yEvi lyAayehe li konakonwe (ziminwe) kElenga enene nenge Elelo lyOpamuthigululwakalo.



Oshitopolwa shegumbo momudhingoloko gwaNhoma-Tsumkwe. Ethano kuRichard Paklepa.

OSHITOPOLWA 21: ELENGA ENENE NENGE ELELO LYOPAMUTHIGULULWAKALO OLI NA OONKONDO DHINI UUNA TASHI YA PETOKOLO LI NASHA NEINDILO?

Elenga nenge Elelo lyOpamuthigululwakalo otashi vulika:

- li konakone eindilo nokuninga ekwatathano naantu shi nasha neindilo, nenge
- okugongaleka omutumba ngele omukwashigwana gumwe a tindi egandjo lyuuthemba wevi pamuthigululwakalo wu pewe nakuninga eindilo. Piihokolola mpoka, omuningi gweindilo naangoka e li ompinge neindilo oye na okupewa ompito ya gandje omatompelo gawo taga popile eindilo nenge ge li ompinge neindilo.

Ngele Elenga nenge Elelo lyOpamuthigululwakalo lya tala eindilo, otashi vulika:

- ya tinde eindilo, nenge
- ya zimine eindilo.

Uuna eindilo lyoshitopolwa shepya nenge shegumbo lya ziminwa, Elenga nenge Elelo lyOpamuthigululwakalo otashi vulika:

- li gandje uuthemba woshitopolwa shoka shevi ndyoka lya indilwa,
- li gandje uuthemba woshitopolwa shilwe shevi patsokumwe nomuningi gweindilo,
- li uthe uunene noongamba dhoshitopolwa shevi shoka omuningi gweindilo a pewa uuthemba washo.

OSHIKOPOLWA 22: OMUNTU OHA NINGI EINDILO NGIINI LYUUTHEMBA WEVI PAMUTHIGULULWAKALO?

Eindilo lyuuthemba wevi pamuthigululwakalo oli na okuningwa:

- pamushangwa,
- mofooloma ndjoka ya uthwa,
- noku yi gandja kElenga lyoshigwana shopamuthigululwakalo moka evi tali indilwa li li.

Nkene u na okuninga eindilo lyuuthemba wevi pamuthigululwakalo moshitopolwa shaayehe:

Tala Annexure 1 oshowo Ompango 2 shi nasha nelandulathano kombinga yeindilo.

Eindilo ndika oli na okukwatela mo omikanda adhihe tadhi pumbiwa dhoka Elenge nenge Elelo lyOpamuthigululwakalo tashi vulika li pumbwe opo li tokole oshinima.

OSHIKOPOLWA 23: ENGAMBEKO LYUUNENE WEVI LI LI PAMAUTHEMBA GEVI PAMUTHIGULULWAKALO

Oveta otayi yelitha mo engambeko lyuunene wevi ndyoka li na okugandjwa nenge okupewa pauthemba wevi pamuthigululwakalo. Ngele evi ndyoka wa ninga eindilo oli na uunene wa konda uunene mboka wa uthwa, Ominista oyi na okuzimina egandjo ndyoka pamushangwa.

Ominista otashi vulika yi uthe uunene wa shiga ko woshitopolwa shontumba konima yoonkundathana nOminista shi nasha nomalalakano gopaunamapya ngaashi tashi popiwa mOveta. Uuna eutho lyuunene mboka tali ningwa, Ominista oyi na okutala kiitsa tayi landula:

- Oshitopolwa moka evi li li.
- Elalakano ndyoka evi tali ka longithwa.
- Oshowo kutya omuningi gweindilo oku na nale omavi gomalalakano ga faathana ngaashi evi ndyoka ta indile pauthemba wevi lyopamuthigululwakalo – kutya nee evi lyaayehe nenge aawe. Oshiholelwa, ngele omuningi gweindilo oha hiila oohekita 2 000 dhevi dhopaipindi nomalalakano gopaunamapya, shika oshi na wo okutalwa uuna taku tokolwa uunene wa shiga ko wevi ndyoka e na okupewa pauthemba wevi pamuthigululwakalo shi nasha noshitopolwa shuunamapya.

Pampango onti-3, Ominista oya tula po uunene wevi wa shiga ko ndyoka li na okugandjwa pauthemba wevi lyopamuthigululwakalo oohekita 20.



Aakiintu aanafaalama taya longo evi nelalakano okuninga po oshikunino: Ethano koNDT.

OSHIKOPOLWA 24: EKOLEKO LYEZIMINO LYEGANDJO LYOMAUTHEMBA GEVI PAMUTHIGULULWAKALO

Mokutala kutya Elenga nenge Elelo lyOpamuthigululwakalo oye na oonkondo dhotango okugandja omauthemba gevi pamuthigululwakalo, egandjo lyuuthemba wevi pamuthigululwakalo kElenga nenge Elelo lyOpamuthigululwakalo inashi gwana okupa uuthemba omuningi gweindilo a longithe evi. Omanga omuningi gweindilo ina ninga ngawo, Olaata yEvi lyAayehe moshitopolwa shoshigwana shopamuthigululwakalo oyi na okukoleka (zimina) egandjo omanga inali taambiwa ko li kale nongushu paveta.

Nkene egandjo lyuuthemba wevi pamuthigululwakalo hali kolekwa/ziminwa?

- 1. Elenga nenge Elelo lyOpamuthigululwakalo oli na andola muule womasiku 30 wegandjo lyuuthemba wevi pamuthigululwakalo, okutseyithila Olaata shi nasha negandjo lyevi, nOlaata oyi na okupewa omauyebele agehe ge nasha negandjo lyevi. Tala Ompango 4 shi nasha nomauyebele ngoka ge na okugandjwa kOlaata.*
- 2. Olaata oyi na okutokola ngele Elenga nenge Elelo lyOpamuthigululwakalo olya gandja evi pamautho gOveta nenge aawe. Mokuninga shika, Olaata otashi vulika yi ninge omapulapulo ge nasha noshinima nokuya moonkundathana naantu yalwe.*

Oonkondo dhini Olaata yEvi lyAayehe yi na shi nasha negandjo lyuuthemba wevi pamuthigululwakalo?

- Olaata oyi na okukoleka egandjo lyuuthemba ngele egandjo olya ningwa palandulathano.
- Olaata ohashi vulika yi shune ko eindilo kElenga nenge kElelo lyOpamuthigululwakalo opo li ninge ishewe etokolo moshinima, pakutala kiiyetwapothaneko ya ningwa kOlaata.
- Olaata oyi na uuthemba okutinda egandjo uuna:
 - uuthemba woshitopolwa shevi shoka wa gandjwa po nale komuntu gulwe,
 - uunene wevi wa pitilila uunene wevi mboka wa uthwa, nenge
 - uuthemba wevi ndyoka wa nuninwa elongitho lyaanamukunda nenge elalakano limwe li nasha nuuwanawa woshigwana.
- Olaata oyi na okugandja omatompelo pamushangwa komuningi gweindilo, Elenga nenge Elelo lyOpamuthigululwakalo uuna ya tinda egandjo lyuuthemba wevi pamuthigululwakalo.

Egameno:

Olaata oyi na okugandja omatompelo pamushangwa komuningi gweindilo, Elenga nenge Elelo lyOpamuthigululwakalo uuna ya tinda egandjo lyuuthemba wevi pamuthigululwakalo. Nomauyebele ngoka omuningi gweindilo ota vulu okuninga etokolo ngele Olaata oya tala tuu iitsa ayihe ya simana uuna tayi tokola okwaazimina egandjo lyuuthemba. Ngele omuningi gweindilo okwa tokola oshinima shi ka talululwe kOmpangu yOpombanda, opo Ompangu yi tale ngele Olaata oya tala iinima pauyuuki, omuningi gweindilo oku na okulongitha omatompelo ngoka a pewa ga tinditha ekoleko lyegandjo lyuuthemba ongekankameno lyomalandulathano getalululo lyoshinima.

OSHIPOLWA 25: EINYOLITHO LYOMAUTHEMBA GEVI LYAAYEHE

Oshike hashi ningwa po konima ngele Olaata yEvi lyAayehe oya koleke egandjo lyuuthemba wevi lyaayehe ?

Olaata oyi na :

1. Okushilipaleka kutya uuthemba owa nyolithwa membo ndyoka li li mondjila kedhina lyomuningi gweindilo. Ompango onti-5 otayi yelitha mo omauyebele ngoka ge na okukwatelwa mo membo.
2. Onzapo yeinyolitho otayi pewa omuningi gweindilo. Onzapo ndjika yeinyolitho oyi na okukala tayi monika ngaashi Ofoloma 2 yoompango.
3. Olaata oyi na okupungula ookopi adhihe dhomainyolitho.

OSHIPOLWA 26: UULETHIMBO LYUUTHEMBA WEVI LYAAYEHE

Uulethimbo wu thike peni hau gandjelwa uuthemba wevi lyaayehe ?

1. Uuthemba wevi lyaayehe ohau kwata ethimbo alihe lyonkalamwenyo yomuningi gweindilo. Uuthemba mbuka ohau kwishi awike uuna omuntu a si.
2. Kakele, mwene gomauthemba, ohashi vulika a tokole okugandja po uuthemba we omanga ina sa. Shika ohatu ti kutya omuntu okweetha po uuthemba we.

Oshike hashi ningwa po ngele omuntu ngoka e na uuthemba okwa mana oondjenda?

1. Uuthemba ohau galukile meendelelo kElenga nenge Elelo lyOpamuthigululwakalo opo wu gandjwe po ishewe.
2. Elenga nenge Elelo lyOpamuthigululwakalo oli na okugandja uuthemba mbuka:
 - Komuholike ngoka a thigwa po. Omuholike ngoka e na omwenyo oku na okugandja eziminino uuthemba mboka e wu pewe ; nenge
 - Okanona kanakusa ngele kape na omuholike ngoka a thigala po nenge ngele omuholike ngoka ina hala okuzimina okupewa uuthemba mboka.*

Oshike hashi ningwa po ngele uuthemba mboka owa pewa omuholike ngoka a thigwa po, ndele ta hokanununa ishewe ndele ye ta si?

1. Uuthemba otaw shuna kElenga nenge Elelo lyOpamuthigululwakalo opo wu vule okugandjwa po, ongele;
 - Okomuholike ngoka a thigwa po gondjokana ontiyali, ihe uuna awike omuholike ngoka a zimina okupewa uuthemba mboka, nenge
 - Ngele kape na omuholike a thigwa po, nenge omuholike a tinda, uuthemba owu na okupewa po okanona komondjokana yotango, nenge ontiyali.

ELONDODHO

Oveta otayi ti kutya uuthemba ou na okupewa okanona kanakusa ngaashi Elenga nenge Elelo lyOpamuthigululwakalo tali utha egandjo ndyoka pamalandulathano goveta yopamuthigululwakalo. Oshitopolwa shika shoveta otashi vulu okulonga tashi ningi okatongotongo aakadhona naamati aagundjuka yoonakusa, oshoka omikalo odhindji dhoveta yopamuthigululwakalo ohadhi tala kelandulathano lyuuthiga komulumentu, tashi ti omonamati ngoka omukuluntu oye ha thigulula omaliko goonakusa. Pakulandula lela oveta yopamuthigululwakalo moonkalo dhi li ngeyi itashi pendula po uuthikepamwe wopaukakwashike-ko-kantu, oshowo kutya itashi ka yambula po omithika dhaakadhona miigwana yopamuthigululwakalo oshowo moshigwana. Oshitopolwa shika shoveta ohashi vulika wo shi lye oshipungo aanona mboka ya valwa pondje yondjoka.

Ishewe, Elenga nenge Elelo lyOpamuthigululwakalo oli na okutokola kutya okanona keni ka gwana okupewa uuthemba palandulathano lyoveta yopamuthigululwakalo. (Tala wo ELONDODHO mepandja lya zi ko).

Oshike hashi ningwa po ngele omuholike gondjokana ontiyali nenge yahuginina, ngoka a pewa uuthemba wevi lyopamuthigululwakalo ngaashi sha yelithwa pombanda, naye ndele ta si?

1. Uuthemba otau galukile kElenga nenge Elelo lyOpamuthigululwakalo ndyoka tali ka tokola kutya olye e na okupewa po uuthemba mboka. Omanga uuthemba inau gandjwa po, Elenga nenge Elelo lyOpamuthigululwakalo oli na okuya moonkundathana naakwanezimo nenge aanegumbo mboka ya gumwa, tashi ningwa palandulathano lyoveta yopamuthigululwakalo.

2. Aantu taya landula otashi vulika ya talwe:

- Omuholike omutiyali ngoka a thigwa po kunakusa ngoka a li a pewa uuthemba shi ikwatelela kutya omuholike ngoka okwa li a hokana namwene gwotango guuthemba.
- Okanona kehe komondjokana ya tumbulwa pombanda.
- Omuntu kehe gulwe.

Koneka:

Okanona ka tekulwa paveta oka talika ko okanona pamalalakano gegandjo lyuuthemba wevi pamuthigululwakalo pashitopolwa shika. Shika otashi ti kutya okanona ka tekulwa paveta oke na uuthemba okupewa uuthemba wevi pamuthigululwakalo uuna mwene gomauthemba gwotango a sa.

Oshike hashi ningwa po ngele kape na omuholike nenge aanona mboka taya vulu okupewa po uuthemba, nenge omuholike a thigwa po naanona oya tinda okutaamba ko uuthemba wevi pamuthigululwakalo?

Uuthemba wevi lyopamuthigululwakalo otali kala miikaha yElenga nenge Elelo lyOpamuthigululwakalo opo wu gandjwe po komuntu kehe.

Oshiholelwa:

Uuthemba wevi lyopamuthigululwakalo owa li gandjwa kuHendrik, ngoka a hokana naLiesbet. Hendrik ta si. Oshike hashi ningilwa uuthemba mbuka?

Uuthemba otau shuna kElenga nenge Elelo lyOpamuthigululwakalo lyoshigwana moka ye li opo wu gandjwe po ishewe. Elenga otali gandja uuthemba kuLiesbet. Liesbet ota vulu okuzimina okupewa uuthemba, uuna uuthemba wevi lyopamuthigululwakalo li na okunyolithwa kedhina lye. Ngele okwe wu tindi, Elenga otali tala ngele aanandjokana okwa li ye na aanona, nopalandulathano lyoveta yopamuthigululwakalo, elenga otali ka tokola kutya okanona keni ke na okupewa uuthemba mboka.

Natu tye andola Liesbet okwa zimine okupewa uuthemba wevi lyopamuthigululwakalo. Konima yoomvula dhontumba, okwa ka hokanwa kuMoses. Oshike hashi ningwa po ngele okwa si?

Uuthemba otau shuna kElenga nenge Elelo lyOpamuthigululwakalo opo wu gandjwe po ishewe. Uuthemba ompito yotango otayi pewa Moses. Ngele okwa tindi, uuthemba otau pewa po okanona kutya nee okomondjokana yotango nenge ontiyali, okanona hoka, pautho lyElenga nenge Elelo lyOpamuthigululwakalo ke na uuthemba okupewa uuthemba palandulathano lyoveta yopamuthigululwakalo.

Oshike hashi ningwa po ngele Moses okwa taamba uuthemba mboka, ndele ta hokana Sofia, ndele Moses ta si?

Uuthemba otau shuna kElenga nenge Elelo lyOpamuthigululwakalo ndyoka li na okuutha kutya uuthemba owu na okupewa iye. Omanga uuthemba inau gandjwa po, Elenga nenge Elelo lyOpamuthigululwakalo oli na okuya moonkundathana naakwanezimo nenge aanegumbo mboka ya gumwa, palandulathano lyoveta yopamuthigululwakalo. Aantu taya landula oye na okutalwa tango ya vule okumona uuthemba:

- 1. Omuholike gwaMoses ngoka a thiga po ano Sofia, molwashoka okwa hokanwa kuMoses sho a li e na uuthemba mboka.*
- 2. Okanona kehe gomoondjokana dhopatatu dha tumbulwa pombanda (ondjokana yaLiesbet kuHendrik, ondjokana yaLiesbet naMoses nenge ondjokana yaMoses naSofia).*
- 3. Omuntu kehe.*

OSHIPOLWA 27: EHULITHOPO LYUUTHEMBA WEVI LYOPAMUTHIGULULWAKALO

Oveta otayi ti kutya Elenga nenge Elelo lyOpamuthigululwakalo otashi vulika li hulithe po uuthemba wevi lyopamuthigululwakalo – nonando uuthemba owa kala po nale manga Oveta inayi ya miilonga.

Omoonkalo dhini tashi vulika Elenga nenge Elelo lyOpamuthigululwakalo li hulithe po uuthemba wevi lyopamuthigululwakalo?

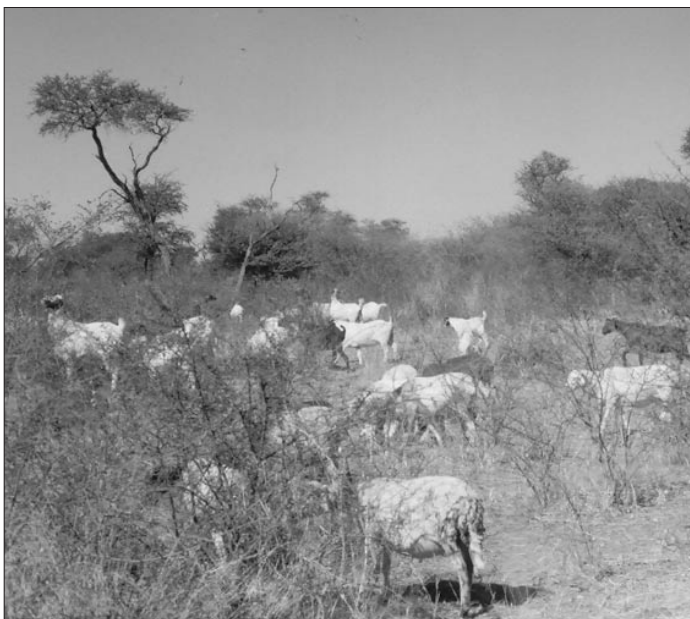
Elenga nenge Elelo lyOpamuthigululwakalo otashi vulika li hulithe po uuthemba wevi lyopamuthigululwakalo moonkalo tadhi landula:

- 1. Ngele mwene guuthemba okwa ndopa okwiiyutha koshinima shi nasha nomautho nenge omangambeko ga kogekwa kuuthemba mboka. Oshiholelwa, ngele uuthemba ou nasha noshitopolwa shegumbo, mwene guuthemba inashi pitikwa a longithe evi ndyoka okutunga po ohotela nokuninga ongeshefa yayo.*
- 2. Ngele uuthemba otau longithwa nelalakano ndyoka inali taambiwa ko paveta yopamuthigululwakalo, kokutya ngaashi omalalakano gepya lyuunafalama nenge egumbo/olukalwa.*

Egameno lyashike mwene guuthemba wevi lyopamuthigululwakalo e na shi nasha nokuyugwa uuthemba mbuka?

Ehulithopo lyuuthemba wevi lyopamuthigululwakalo oli na okunigwa palandulathano lyoveta yopamuthigululwakalo.

Ehulithopo kali nasha noonkondo dhopaveta, okuninga shila Olaata yEvi lyOkomikunda ye shi koleka (zimina).



- 3. Ngele ope na omaukwatya galwe ga uthwa ngoka taga vulu okuhulithitha po uuthemba.*

Ompango onti-6 omu na omusholondondo gomaukwatya galwe ge nasha nehulithithopo lyuuthemba wevi lyopamuthigululwakalo:

- 1. Ngele uuthemba okwa monika nomukalo guulingilingi.*

Ofaalama yikombo moshitopolwa Omatako. Ethano kuWIMSA.

2. Ngele uuthemba wa monika pamukalo gulwe kaa shishi Paveta ndjika.
3. Ngele evi olya kala inali longithwa muule woomvula ndatu.
4. Ngele uuthemba mboka owa li wa pewa nale omuntu gulwe, negandjopo ndyoka olya hula po pamautho gOveta ndjika.

Oshike hashi ningwa po ngele Elenga nenge Elelo lyOpamuthigululwakalo lya hulitha po uuthemba wevi lyopamuthigululwakalo?

1. Elenga nenge Elelo lyOpamuthigululwakalo oli na okutseyithila mbala Olaata yEvi lyAayehe, nokugandja omauyeleele ga pumbiwa.
2. Ngele Olaata oya mbilipalelwa kutya ehulithopo olya enda pauyuuki, olaata oyi na okukoleka ehulithopo ndyoka.
3. Olaata oyi na okushilipaleka kutya ehulithopo ndyoka olya nyolelwa membo.

Tala Ompango onti-6 omolwomauyeleele ogendji kombinga yehulithopo lyomauthemba gevi lyopamuthigululwakalo.

OSHIPOPOLWA 28: ESIMANEKO LYOMAUTHEMBA GEVI LYOPAMUTHIGULULWAKALO NGOKA GE LI PO NALE.

Oveta itayi ungaunga ashike nomauthemba gevi lyopamuthigululwakalo ngoka taga gandjwa uuna Oveta tayi tameke iilonga. Oveta otayi ka ungaunga wo nomauthemba gevi lyopamuthigululwakalo ngoka ge li po nale, ano omauthemba gevi ngoka ga kala pos ho Oveta ya tameke okulonga.

Aantu mboka ye na nale omauthemba okukala nenge okulongitha evi lyokomikunda otaya ka tsikila nokukala nomauthemba gawo, okuninga shila:

1. Omuntu ngoka e na uuthemba okukala mevi lyontumba ta tindwa uuna ta ka ninga eindilo uuthemba mboka wu simanekwe kOlaata yEvi lyAayehe.
2. Evi tali shunithwa miikaha yEpangelo molwashoka mwene guuthemba ina ninga eindilo pamushangwa pethimbo uuthemba wu simanekwe nokunyolitha uuthemba wevi.



Omauthemba agehe gokulongitha evi, ngaashi omauthemba guulithilo, oge na okunyolithwa pamautho gOveta. Ethano koNNFU.

Omuntu ngoka e na nale uuthemba wevi pamuthigululwakalo ota taambiwa ko ngiini Paveta ndjika?

1. Omuntu oku na okuninga eindilo kOlaata yEvi lyAayehe yomoshitopolwa moka mu evi li li, opo li taambiwe ko nokunyolitha uuthemba mbuka Paveta ndjika. Eindilo ndika oli na okukala mOfoloma 3, ndjoka tayi yelitha mo omalandulathano noompango.
2. Momatseyitho gEpangelo onomola 35 oshowo 36 yomumvo 2003, Ominista oya tseyitha kutya esiku 1 Maalitsa 2003, omo aantu mboka ya mona omauthemba gevi pamuthigululwakalo ye na okutameka okuninga omaindilo gokutaambiwa ko nokunyolitha omauthemba gawo ngoka ye na nale pamuthigululwakalo. (Omolwomalalakano getu, natu tye esiku ndika olyo 'esiku lyetameko lyokuninga omaindilo').
3. Pamautho goshitopolwa 37, Olaata otashi vulika yi tume oshinima kokomitiye yomakonakono yi konakone oshinima omanga Olaata inayi ninga etokolo lyahugunina.

Koneka:

Ooyene uuthemba wevi pamuthigululwakalo oyi na okuninga omaindilo gokuziminwa/taambiwa ko nokunyolitha omauthemba gawo ngoka ye na nale gevi lyopamuthigululwakalo muule woomvula ndatu okuza esiku 1 Maalitsa 2003. Ominista otashi vulika yi lelepeke ethimbo ndika patseyitho koshigwana.

Ngele omuntu okwa hala okuninga eindilo lyokuthembapalekwa okukaleka po ondhalate/enkolo ndyoka li li po nale sho Oveta ya yi miilonga, omuntu oku na okuninga shike?

(Dhimbulukwa kkutya pamautho gOveta, okudhika po oondhalate /omankolo omape nokukala poondhalate dhoka dhi li po oshi na okuuthwa pamalandulathano gOveta).

1. Okuninga eindilo kOlaata yEvi lyAayehe moshitopolwa moka evi dha tulwa mondhalate li li opo a thembapalekwe okukaleka po ondhalate pakulongitha Ofoloma 3. (Tala koompango).
2. Ominista oya tseyitha esiku 1 Maalitsa 2003 ongesiku moka aantu mboka ya hala okukaleka po oondhalate taya vulu okutameka okuninga eindilo lyethembapaleko ye shi ninge. (Molwomalalakano getu, natu tale ko esiku ndika ongetameko lyomaindilo goondhalate). Tala Etseyitho lyEpangelo onomola 35 yomumvo 2003 shi nasha noshinima shika.
3. Pamautho goshitopolwa 37, Olaata otashi vulika yi tume oshinima kokomitiye komakonakono ka konakone oshinima omanga Olaata inayi ninga etokolo lyahugunina.

Koneka:

Aantu mboka ya hala okuninga omaindilo gokupewa uuthemba wokukaleka po oondhalate, oye na oku shi ninga meni lyuule woomvula ndatu okutameka esiku 1 Maalitsa 2003. Ominista otashi vulika yi gandje etseyitho koshigwana okulelepeka ethimbo ndika.

Omauyelele geni ge na okugandjwa uuna taku ningwa eindilo lyeziminino neinyolitho li nasha nuuthemba wevi pamuthigululwakalo mboka aantu ye na nale, nenge ethembapaleko okukaleka po oondhalate/omankolo?

1. Omikanda kehe dhuumbangi tau yambidhidha eindilo. Oshiholelwa, aakwashigwana otashi vulika ya nyole ombapila tayi ti kutya omuningi gweindilo okwa kala moshitopolwa shoka shevi omimvo/ethimbo ele.
2. Ombapila ya za kElenga nenge Elelo lyOpamuthigululwakalo tayi yelitha mo omauyelele ngoka taga pumbiwa paempango dhoka dhi na natango okugandjwa kOminista.
3. Omikanda kehe dhilwe nenge omauyelele ngoka tashi vulika ga pumbiwa kOlaata.

Oshike tashi ningwa po ngele omuntu okwa ningi eindilo lyeziminino neinyolitho lyuuthemba wevi lyopamuthigululwakalo konima yethimbo lyakwisha ndyoka lya tumbulwa pombanda?

*Tala Ompango 7
omolwoma uyelele galwe ge
nasha nomukalo gokuninga
omaindilo.*

1. Ngele omuntu ota vulu okugandja omatompelo omawanawa kutya omolwashike eindilo lye e li ninga kwatoka, Ominista otashi vulika yi pitike eindilo.
2. Ngele omatompelo omawanawa inaga gandjwa, omuntu ota ka talika ko a etha po/ a gandja po uuthemba wawo wevi.
3. Monkalo yi li ngeyi, evi otali shunithwa kEpagelo nokukala tali vulu okugandjwa po palandulathano lyOveta ndjika.

Oonkondo dhini Olaata yEvi lyAayehe yi na shi nasha nomaindilo gokutaambiwa ko neinyolitho gomauthemba gevi lyopamuthigululwakalo ngoka ge niwe nale?

1. Olaata otashi vulika yi konakone oshinima oshowo okukundathana naantu yalwe okukonga omauyelele ge nasha noshinima, ngaashi:
 - Kutya uunake nankene uuthemba wa li wa gandjwa.
 - Kutya ngele ope na aantu yalwe taya ti oyo ooyene yomauthemba wevi oyo tuu ndyoka.
 - Kutya ngele uunene wevi otau tsu kumwe nuunene wevi wa pitikwa kOminista.
 - Kombinga yoongamba dhevi.
2. Ngele oya mbilipalelwa kuushili (omauyelele ge li mondjila) ge nasha neindilo lyuuthemba wevi pamuthigululwakalo mboka wu li po nale, Olaata oyi na:
 - Okuzimina uuthemba womuningi gweindilo wu nasha nevi.
 - Okushilipaleka kutya omaukwatya guuthemba oga nyolelwa membo palandulathano lyOmpango onti-8.
 - Okugandja onzapo yeinyolitho (Ofoloma 4 yoompango) komuningi gweindilo.
3. Ngele ope na omaindilo taga kondjithathana ge nasha nevi lyontumba nenge ngele Olaata oya limbililwa uushili womauyelele womuningi gweindil, Olaata oyi na okugongaleka iihokolola. Mokulandula iihokolola Olaata otashi vulika yi:
 - Koleke eindilo.
 - Koleke eindilo shi ikwatelela komayoolokathano taga uthwa kOlaata, ngaashi uunene noongamba dheindilo.
 - Gandje uuthemba wevi moshitopolwa shimwe ngele eindilo lyomuntu ngoka olya palula oshitopolwa shomauwanawa gaanamukunda/oshinima shaayehe (ngaashi uulithilo/edhiya lyomeya)
 - Okutinda eindilo.
 - Okushunitha ko oshinima kElenga nenge Elelo lyOpamuthigululwakalo ku talike ngele omuningi gweindilo otashi vulika a pewe uuthemba wevi pamuthigululwakalo, kutya nee oshi nasha nevi ndyoka a ninga eindilo nenge ota pewa oshitopolwa shilwe shevi.

Elenga nenge Elelo lyOpamuthigululwakalo oli na ihe okutokola oshinima tashi talika ko sha fa eindilo epe lyokupewa uuthemba wevi pamuthigululwakalo.

Ompango onti-9 otayi yelitha omukalo ngoka gun a okulandulwa uuna taku ningwa iihokolola okutokola omaindilo taga kondjithathana shi nasha nomauthemba wevi gopamuthigululwakalo ngoka ge li po nale.



Pamautho gOveta, oshinima shaayehe, ongaashi uuthemba wuulithilo, ou na okunyolithwa. Ethano koNNFU.

Oshike hashi ningwa po uuna omuntu ngoka e na uuthemba wevi pamuthigululwakalo a si?

Ope na oompito mbali tadhi vulika:

1. Mwene guuthemba ngele okwa si pethimbo ndyoka, ihe ina adhika a ninga eindilo lyetaambiwoko lyuuthemba. Oveta otayi gandja uuthemba komuholike ngoka a thigwa po a ninge eindilo sha fa a kala e na nale uuthemba okuninga eindilo (sha fa kutya omuholike ngoka a thigwa po a kala oye mwene guuthemba). Ngele kape na omuholike a thigwa po, Olaata otashi vulika yi pitike okanona kanakusa ka ninge eindilo lyetaambiwoko lyuuthemba, konima yoonkundathana nElenga nenge Elelo lyOpamuthigululwakalo.
2. Mwene guuthemba mboka wu li po nale ngele okwa ningi eindilo lyetaambiwoko lyuuthemba wevi pamuthigululwakalo muule wethimbo lya gandjwa kOminista, ndele ta si omanga oshinima inashi tokolwa. Eindilo otali ka talika ko lya fa lya ningwa komuholike ngoka a thigwa po nenge ngele kape na omuholike a thigwa po, okanona hoka ka ziminwa kElenga nenge Elelo lyOpamuthigululwakalo.

Tala Annexure 2 shi nasha nelandulathano lyokuninga eindilo pashitopolwa 28.

Kombinga yoondhalate/omankolo ngoka ge li po nale ongiini?

Aantu mboka ye na nale omankolo/oonthalate oye na okuninga omaindilo kOlaata yEvi lyAyaye opo ya thembapalekwe okukala noondhalate/omankolo gawo. (Ompango onti-7 otayi gandja omauyelele ogendji nkene omuntu e na okuninga eindilo okukaleka po enkolo/ondhalate ye).

Olaata yEvi lyAayehe oyi na oonkondo dhini shi nasha noondhalate?

1. Olaata otashi vulika yi kundathane nElenga kombinga yondhalate yontumba ngele olaata oyi wete sha pumbiwa oku shi ninga.
2. Olaata oku yi na okugandja euthoziminino komuningi gweindilo a kaleke po ondhalate, ngele olaata oya mbilipalelwa kutya:
 - ondhalate oya tulwa po palandulathano lyoveta yopamuthigululwakalo nenge oveta yilwe.
 - ondhalate itayi ka dhigupaleka nenge okungambeka elongitho nenge uuwanawa wontumba woshinima shaayehe hashi longithwa kaanamukunda yalwe pomukunda mpoka, oshowo,
 - kutya ope na omatompelo ge shi okuuvika ko kutya omolwashike omuningi gweindilo e na okupitikwa a kaleke po ondhalate/enkolo lye.
3. Olaata otashi vulika yi tule po omaukwatya gwontumba ngele oya pitika ondhalate/enkolo li kalekwe kevi.

OSHI TOPOLWA 29: OMAUTHEMBA GUULITHILO

Oveta oyi na omautho kombinga yomauthemba guulithilo oshowo elongitho lyoshinima/ehala hashi longithwa kaanamukunda/koshigwana.

Oshinima shaayehe shoshigwana shopamuthigululwakalo osha mangulukila okulongithwa paveta kaanamukunda ngaashi okulitha iimuna yawo. Uuthemba mbuka owomukalimo kehe pomukunda/oshigwana shoka oshowo kutya uuthemba mbuka kau na omangambeko gwontumba.

Omauthemba guulithilo ge nasha noshinima shaayehe otashi vulika wu ngambekwe nenge wu kuthwe po thilu omolwoonkalo dhontumba.

Oonkalo dhini tashi vulika omauthemba guulithilo ga ngambekwe?

Uuthemba okulongitha oshinima shaayehe otashi vulika wu ngambekwe komaukwatya taga landula:

1. Omaukwatya ngoka tashi vulika ga tulwe po kElenga nenge Elelo lyOpamuthigululwakalo, mwa kwatelwa oonkalo dhi nasha:
 - noludhi oshowo omuyalu gwiimuna mbyoka tashi vulika yi na okulwithwa pehala ndyoka. Pamautho gOmpango onti-10, aakalimo mboka ye na uuthemba otashi vulika kaa ya kale niimuna mbyoka iinene ya yi vulithe 300 nenge iimuna mbyoka iishona yi vulithe 180 hayi lithwa pehala lyaayehe ethimbo kehe.
 - oshitopolwa nenge iitopolwa yaayehe moka tashi vulika iimuna yi ninge hayi lithwa, oshowo etembudho lyiimuna yi ka nape kiitopolwa yilwe.
2. Uuthemba wElenga, Elelo lyOpamuthigululwakalo nenge Olaata yEvi lyAayehe okulongitha oshipambu kehe shoshitopolwa shevi/oshinima shaayehe sha gandjwa pauthemba wOveta ndjika.
3. Ompango onti-10 otayi indike omukalimo gopaveta pomukunda ngoka oye mwene nenge ta hiila evi kehe lyopaunamapya okulitha iimuna ye moshitopolwa shuulithilo waayehe.
4. Uuthemba wOmupresidende okukaleka nenge okukutha po thilu oshipambu kehe shevi lyaayehe omolwelalakano lyontumba li nasha nuuwanawa woshigwana.

Oonkalo dhini tashi vulika Elenga nenge Elelo lyOpamuthigululwakalo li kuthe omukalimo omauthemba guulithilo?

Elenga nenge Elelo lyOpamuthigululwakalo otashi vulika li kuthe omukalimo omauthemba guulithilo uuna:

1. Omuntu a ndopa okusimaneka omaukwatya ga tulwa po ge nasha nelongitho lyoshinima shaayehe, oshiholelwa ngele omukalimo oku na oongombe dha pitilila omuyalu gwa uthwa okulithwa pehala lyaayehe.
2. Omuntu e na uuthemba wevi limwe ili ili, kutya nee olyopaumwene nenge aawe, li na uunene wa pitilila uunene mboka wa uthwa kOminista pashitopolwa oshiti-23. Elenga nenge Elelo lyOpamuthigululwakalo oli na okushilipaleka kutya evi ndyoka oli na uulithilo wa gwana iimuna yomuntu ngoka.
3. Omuntu a ningi shimwe shomiinima inayi pitikwa tayi landula, okuninga shila Elenga nenge Elelo lyOpamuthigululwakalo lya gandja eziminino pamushangwa, neziminino ndika olya kolekwa kOlaata yEvi lyAayehe.
 - Okudhika nenge okutunga etungo kehe nenge omutungilo gwasha mevi lyaayehe.
 - Okupulula nenge okulima oshitopolwa kehe shevi lyaayehe.
 - Okulumba nenge okukala noshitopolwa kehe mevi lyaayehe.
 - Okukeelela oondjila/uupitilo okuya mehala kehe lyomeya mevi lyaayehe, nenge okuya moshipala pamukalo kehe elongitho lyomahala gomeya nenge oku ga yonagula.
 - Okuninga sha kehe kaa shishi epitikilo lyuulithilo paveta mevi lyaayehe shoka, tashi keelele nenge ngambeke aakalimo yalwe omauthemba okulitha.

Koneka:

Ekaulonyanga lyiilonga kehe tayi keelelwa koveta oshi li eyono hali geelwa paveta, shoka tashi vulu okupetha omuntu egeelo lyokapandi koodola N\$4 000 nenge ondholongu yuulethembo inau konda pomvula yimwe.

Omuntu ngoka kee shi omukalimo gopomukunda/oshigwana shoka otashi vulika a pewe uuthemba wokulitha?

Eeno. Omuntu ngoka kee shi omukalimo oku na okuninga eindilo lyuuthemba wokulitha kElenga nenge Elelo lyOpamuthigululwakalo. Uuna wa gandjwa, uuthemba wokulitha oku na okuwilikwa komaukwatya/oonkalo dhoka tadhi tulwa po kElenga nenge Elelo lyOpamuthigululwakalo.

Elenga nenge Elelo lyOpamuthigululwakalo ohashi vulika li kuthe ko uuthemba mbuka ethimbo kehe, ngele shika oshi li muuwanawa waakalimo, ngaashi oshikukuta nenge etompelo limwe.

OSHIPOLWA 2: UUTHEMBA WOMUKALO GOKUHIILA

OSHIPOLWA 30: OONKONDO OKUGANDJA UUTHEMBA WOMUKALO GOKUHIILA

Oolaata dhOmavi gAayehe odhi na oonkondo okugandja omauthemba womukalo dhokuhiila oshipambu kehe shevi lyaayehe, ihe uuthemba mbuka womukalo gokuhiila otau vulu ashike okugandjwa ngele Elelo lyOpamuthigululwakalo lyoshigwana shoka shopamuthigulukwalo moshitopolwa shoka shaayehe moka evi ndyoka li li olya zimina uuthemba wegandjo lyomukalo ngoka gokuhiila.

Oshike hashi ningwa po ngele Elelo lyOpamuthigululwakalo olya tindi okuzimina egandjo lyuuthemba womukalo gokuhiila?

Ngele Olaata yEvi lyAayehe oyi itaala kutya ezimino olya pumbwa okugandjwa, olaata otashi vulika yi tume oshinima shoka komutopotokononi a ninge etokolo. Omutopotokononi oha ulikwa okupulakena oontamanana pokati kOlaata yEvi lyAayehe nElelo lyOpamuthigululwakalo, nokuninga etokolo kutya olaata nenge elelo olyo li li mondjila. Ngele omupotokononi ota dhiladhila kutya Elelo lyOpamuthigululwakalo olya tinda uuthemba pwaa na omatompelo, nena omupotokononi oku na oonkondo okugandja ezimino peha lyElelo lyOpamuthigululwakalo. (Tala Ompango 29), ndjoka tayi utha kutya Ofoloma 16 oyi na okulongithwa okutuma oshinima/omukundu komukalo gwepotokonono.)

Omupotokononi oha ulikwa ngiini?

1. Ominista oyi na okuulika omupotokononi ngoka a ziminwa kOlaata nElelo lyOpamuthigululwakalo okupulakena iihokolola/oontamanana. Omupotokononi ota ka tokola kutya olye e li mondjila.
2. Shampa ya tseyithilwa edhina noonzapo dhomupotokononi ngoka a dhiladhilwa, Olaata nenge Elelo lyOpamuthigululwakalo oli na omasiku 30 okutseyithila Ominista shi nasha netokolo lyawo. Ngele oya ndopa oku shi ninga, nenge ngele inaya taamba ko euliko lyaangoka a dhiladhilwa iikando yi vulithe iyali, Ominista otashi vulika kaa yi simaneke ompito ndjoka yezimino okuza kolaata nelelo lyopamuthigululwakalo. Uuna shika sha ningwa, Ominista otashi vulika yi ulike omupotokononi pwaa na okumona ezimino okuza kOlaata nenge Elelo lyOpamuthigululwakalo.

Omauthemba gomukalo gokuhiila shi nasha nomalalakano gopaunamapya

Otashi monika sha fa kutya omauthemba gomukalo gokuhiila pakwalukehe oga kwatela mo oonkalo dhoka dha kwatelwa momagandjo gopamuthigululwakalo gevi lyaayehe, ngaashi egandjo lyomauthemba guulithilo, evi lyokutunga egumbo nenge lyomalakano gopaunamapya. Efatululo ndika otali ka kwatela mo iinima ayihe ngaashi egandjo (lyezimino okukala pevi/ehala lyontumba) komutalelipo a dhika po okamba/ontanda nenge egandjo lyuuthemba woprojeka yomahangu/osuuka.

Oveta otayi yelitha eyooloko pokati komauthemba gomukalo gokuhiila nomauthemba gomukalo gokuhiila nomalalakano gopaunamapya. Uuthemba womukalo gokuhiila nomalalakano gopaunamapya otashi vulika wu gandjwe awike shi nasha nevi ndyoka li li moshitopolwa showina. Oshitolwa showina osho oshitolwa shoka sha tothwa mo kOminista moGazete yEpangelo shoka Olaata yEvi lyAayehe tashi vulika yi gandje uuthemba, womalalakano gopaunamapya. Evi ndika oli na okutothwa mo konima yoonkundathana nOlaata yEvi lyAayehe nElelo lyOpamuthigululwakalo ndyoka lya gumwa koshinima.

Oshike hashi ningwa po ngele Elelo lyOpamuthigululwakalo oya tindi okuzimina egandjo lyuuthemba womukalo gokuhiila?

Ngele Olaata yEvi lyAayehe otayi dhiladhila kutya ezimino okwa li na okugandjwa, Olaata otashi vulika yi gandja oshinima momake gomupotokononi a ninge etokolo. Ngele omupotokononi okwa mbilipalelwa kutya Elelo lyOpamuthigululwakalo olya tinda okuzimina pwaa na etompelo, omupotokononi oku na oonkondo okugandja ezimino peha lyElelo lyOpamuthigululwakalo.

Ihe Oveta otayi utha wo oonkalo dhi ikalekelwa kompango kutya omauthemba gomukalo gokuhiila ge nasha nomalalakano guunamapya otaga vulu awike okugandjwa oku shi talela momavi ngoka ge li miitopolwa yowina. Ngele omuntu okwa hala okupewa uuthemba womukalo gokuhiila evi nomalalakano guunafalama ndyoka li li alihe nenge etata moshitopolwa showina shi nasha nomalalakano guunafalama, nena otashi vulika a ninge eindilo Iyezimino kOminista mOfoloma 6 (Tala Ompango onti-12). Konima yoonkundathana nElelo lyOpamuthigululwakalo oshowo Olaata yEvi lyAayehe, Ominista otashi vulika yi pitike eindilo, ihe uuna awike ngele Ominista oya mbilipalelwa kutya:

- egandjo lyuuthemba womukalo gokuhiila otali ka ya moshipala nenge okungambeka elongitho lyoshitopolwa shevi lyaanamukunda/lyaayehe, oshowo
- omatompelo omawanawa opo ge li kutya omolwashike eindilo li na okuziminwa.

OSHIPOPOLWA 31: EINDILO LYUUTHEMBA WOMUKALO GOKUHIILA

Omuntu ota vulu ngiini okuninga eindilo lyuuthemba womukalo gokuhiila evi lyaayehe?

Tala Annexure 3 shi nasha nelandulathano lyokuninga eindilo.

1. Eindilo oli na okuningwa kOlaata yEvi lyAayehe yoshitopolwa moka evi li li.
2. Eindilo oli na okuningwa mOfoloma 5. (Tala Ompango onti-11 omolwomauelele ga gwedhwa po).
3. Uuthemba womukalo gokuhiila itashi vulika wu gandjwe ngele evi ndyoka oli niwe nale uuthemba wopamuthigululwakalo komuntu gulwe. Kakele, mwene guuthemba wevi pamuthigululwakalo otashi vulika a zimine okugandja po uuthemba wevi shi ikatelela:

- kofuto ya uvathanwa, oshowo
- omalongekidho tage mu opalele okutulululwa mevi limwe li ili.

4. Olaata yEvi lyAayehe otayi vulu okugandja uuthemba womukalo gokuhiila ngele oyi wete tashi vulika, shampa ashike Elelo lyOpamuthigululwakalo tali shi zimine. Kakele, moonkalo tadhi landula Ominista oyi na okugandja ezimino pamushangwa omanga Olaata inayi vula okugandja uuthemba womukalo gokuhiila:

- Uuna evi lya pitilila uunene mboka wa uthwa okulongitha evi ndyoka. Uunene wa shiga ko wevi oohekita 50 dhevi, ngaashi tashi uthwa kOmpango onti-13. Oshiholelwa, ngele uuthemba womukalo gokuhiila owa pewa oshigwana okutunga po okamba yontumba, noshitopolwa onene shi vule oohekita 50, nena Ominista oyi na okuzimina eindilo ndika pamushangwa omanga uuthemba womukalo ngoka gokuhiila inau gandjwa.
- Uuna omuningi gweindilo oye mwene guuthemba wokuhila Paveta ndjika shi nasha noshipambu shimwe shevi.
- Uuna omuningi gweindilo e na nale uuthemba wevi lyaayehe ndyoka kali li paveta yopamuthigululwakalo, oshiholelwa eziminino okukala pehala/evi, okuninga shila etaambiwoko lyuuthemba lya tindwa pashitopolwa oshiti-35. (Tala oonkundathana pashitopolwa oshiti-35.)

Shi li ompinge niilalakanenwa yondungethaneko yewilikongundu lyehangano lyetonatelo lyuuntshitwe.

Ongoshitopolwa shondungethaneko yewilikongundu, ehanganano lyetonatelo lyuuntshitwe otali wilike okamba yoshigwana yaatalelipo yi li pehala ewanawa lyegwo lyomeya. Okugandja uuthemba womukalo gokuhiila komuntu gulwe lyoshitopolwa moka mu na egwo lyomeya otashi kala shi li ompinge niilalakanenwa yondungethaneko yewilikongundu lyetonatelo lyuuntshitwe, oshoka oshigwana itashi ka mona mo we uuwanawa washa mokamba ndjoka. Monkalo yi li ngeyi, Olaata yEvi lyAayehe itashi vulika yi zimine eindilo lyuuthemba womukalo gokuhiila komuntu ngoka.

Oshike hashi ningwa po ngele uuthemba womukalo gokuhiila wu nasha nevi ndyoka ombinga yimwe oyi li oshitopolwa shetonatelo lyuuntshitwe?

Monkalo ndjika, Olaata yEvi lyAayehe oyi na okutala kondungethaneko lyewilikongundu nenge elongitho ndyoka lya tokolwa kokomitiye yetonatelo lyuuntshitwe. Ngele evi ndyoka tali ningilwa eindilo otali ka longithwa pamukalo ngoka gu li ompinge nomalalakano gewilikongundu oshowo ondungethaneko lyelongitho, Olaata otashi vulika yi kale inayi zimina eindilo ndyoka.

OSHIPOLWA 32: OMAUKWATYA GE NASHA NUUTHEMBA WOMUKALO GOKUHIILA

Omaukwatya geni ge na okugwanithwa po omanga uuthemba womukalo gokuhiila inau ziminwa?

1. Omuyalu goshimaliwa shontumba ogu na okufutwa kOlaata yEvi lyAayehe shi nasha nuuthemba womukalo gokuhiila oshowo oshimaliwa shiinima ya wapalekwa mevi moka. Omuyalu ngoka ohagu lukwa oshimaliwa shokuthetha/ okuhiila. Ompango onti-14 oya totha mo omaukwatya ngoka ge na okutalwa kOlaata uuna tayi tokola omuyalu gokuhiila ngoka gu na okufutilwa uuthemba womukalo gokuhiila.
2. Ngele omuyalu goshimaliwa inagu futwa mbala, Olaata oyi na okumbilipalelwa kutya omuningi gweindilo okwa gandja eshilipaleko kutya ota ka futa oshimaliwa shoka uuna taka nyolitha uuthemba we womukalo gokuhiila evi.
3. Olaata otashi vulika yi pitike omuyalu futwe paekako/komwedhi. Monkalo ndjika, omuningi gweindilo nOlaata oye na okuzimina ethaneko lyomuyalu ngoka gu na okufutwa komwedhi oshowo omukalo ngoka iifutwa yi na okugandjwa.

Omuyalu ngoka hagu futilwa uuthemba womukalo gokuhiila ohagu uthwa ngiini?

Ominista oyi na okuyelitha nkene omuyalu hagu futilwa uuthemba womukalo gokuhiila gu na okutokolwa.



litopolwa yOmalelo gOpaendoolopa mbyoka yi li moongamba dhiitopolwa yeve lyaayehe, ngaashi Opuwo, inayi kwatelwa mo momavi gaayehe. Ethano koNNFU.

limaliwa mbyoka hayi futilwa omauthemba gomikalo dhokuhiila ohayi ningwa ngiini?

limaliwa mbika oyi na okufutwa moshiketha, sha totwa po paveta, nelalakano lyomarendulopo goshitopolwa.

Otashi vulika omaukwatya gwontumba ga tulilwe po uuthemba womukalo gokuhiila?

Eeno. Uuthemba womukalo gokuhiila owa kogekwa komaukwatya gakwalukehe nenge gwontumba ga uthwa kOminista. Ominista oya yelitha mo omaukwatya taga landula mOmpango onti-15:

1. Evi kali na okulongithwa:

- Elalakano limwe kaa li shi ndyoka lya ziminwa. Oshiholelwa, ngele uuthemba owa ziminwa okuninga po okamba yaatalelipo, nena evi ndyoka kali na okulongithwa okutunga po ofambulika.
- Elalakano ndyoka tali taagulula Oveta yOmalovu, Oveta yonomola 6, yomumvo 1998.
- Elalakano ndyoka tali taagulula ooveta dhi nasha niingamithi yuumbwigi. Oshiholelwa, omwene guuthemba ina pitikwa okukuna omapangwe nenge okulanditha iingamithi (marijuana) mevi ndyoka ta hiile.

2. Uuthemba ou na okugandjwa evi moka mu konakonwe oshowo omatungo kehe okushilipaleka kutya otagi iyutha komaukwatya ga tulwa po.

3. Mwene guuthemba oye na oshinakugwanithwa shokukaleka po omandhindhiliko ngoka taga ulike oongamba dhevi ndyoka lya nyolelwa kedhina lye.

4. Mwene guuthemba pwaa na ezimino, ina pitikwa okupata oondjila nenge oopate dhoka dha enda mevi ndyoka ta hiila.

5. Mwene guuthemba oku na okuungauka paumwene nongeshefa ndjoka a pewelwa uuthemba womukalo gokuhiila, nenge omukuluntuwiliki nenge oshilyo shehangano oye e na okuwilika ongeshefa uuna ongeshefa mwene oye a pewa uuthemba mboka womukalo gokuhiila.

6. Ngele okwe shi pulwa a ninge ngawo kElenga, Elelo lyOpamuthigululwakalo nenge Olaata, mwene guuthemba womukalo gokuhiila oku na okutula omatungo meshilipaleko mevi ndyoka lya hiilwa uuna pwa holoka omulilo/nenge sha shilwe.



Uuna kwa tulwa nale ondhalate, eziminino oli na okugandjwa okukaleka po enkolo/ondhalate.7.

7. Mwene guuthemba itashi vulika a lundulule omatungo nenge omaliko gepangelo pwa tango okumona eziminino kOminista.
8. Olaata oyi na okutula po omukalo nkene evil li n a okuningwa omakonakono-talelo.

Otashi vulika uuthemba wokuhiila wu hulithwe po?

Eeno. Olaata otashi vulika yi hulithe po uuthemba wokuhiila pamatompelo gayooloka ngoka taga yelithwa mOmpango onti-15. Omatompelo ngaka ogo:

1. Uuna uuthemba wa gandjwa papuko
2. Uuna uuthemba wa monika pamukalo guulingilingi nenge gwa kaa gu li mondjila.
3. Ngele mwene guuthemba okwa ndopa:
 - okwiiyutha komaukwatya ge nasha nuuthemba womukalo gokuhiila;
 - ina futa oomwedhi mbali dha landulathana uuna Olaata okwa li ya uvathanwa nayo okufuta komwedhi/paikako; nenge
 - ina futa omuyalu gokuhiila uule womwedhi/omasiku 30 sho wa mono etseyitho pamushangwa shi nasha nofuto.
4. Ngele evi itali longithwa we nelalakano ndyoka lya pulilwa uuthemba womukalo gokuhiila.
5. Ngele mwene guuthemba okwa monika ondjo meyono lyokutenda ko oshitopolwa nenge okuumba ko epangelo koshipundi.

Moonkalo dhontumba, Ominista otashi vulika yi hulithe po uuthemba womukalo gokuhiila gu nasha nomalalakano guunamapya, ngele evi ndyoka lya pewa uuthemba oli li pondje yoshitopolwa shoka sha dhiladhilwa.

OSHIPOLWA 33: EINYOLITHO LYOMAUTHEMBA GOMUKALO GOKUHIILA

Oshike hashi ningwa po konima ngele uuthemba womukalo gokuhiila owa ziminwa/gandjwa?

Shampa eindilo lyuuthemba womukalo gokuhiila wa ziminwa, Olaata oyi na:

- Okushilipaleka kutya uuthemba womukalo gokuhiila owa nyolelwa membo ndyoka lya uthwa, kedhina lyomuningi gweindilo pamautho gOmpango onti-16.
- Okugandja onzapo yuuthemba womukalo gokuhiila komuningi gweindilo, mofoloma okuza mOshitopolwa A shOfoloma 7 (yi nasha nomalalakano kaa ge shi omalalakano galwe gopaunamapya pondje yoshitopolwa sha dhiladhilwa) nenge Oshitopolwa B shOfoloma 7 (omalalakano guunamapya moshitopolwa sha dhiladhilwa).
- Ngele evi ndyoka olya konakonwa Paveta yEkonakono lyEvi, Oveta yonomola 33 yomumvo 1993, showo uulethimbo wuuthemba oomvula 10 nenge dhi vulithe po, uuthemba womukalo gokuhiila owu na okunyolithwa Paveta yUumwene wOmaliko, Oveta yonomola 47 yomumvo 1937.

OSHIPOLWA 34: UULETHIMBO WUUTHEMBA WOMUKALO GOKUHIILA

Uulethimbo womukalo gokuhiila ou shike peni?

- Uulethimbo wopombanda omimvo 99, ihe omuntu ngoka a ninga eindilo nokumona uuthemba womukalo gokuhiila nOlaata oye na okuuvathana ethimbo.
- Omauthemba gomukalo gokuhiila gethimbo inali konda pomimvo 10 kage na ongushu, okuninga shila.

Uuthemba womukalo gokuhiila ohagu vulu okuningululwa – gu tameke ishewe omupe?

Eeno. Olaata namwene guuthemba otashi vulika ya tse kumwe a ningululithe uuthemba mbuka. Ihe uuna uulethembo wa ziminwa owu vulithe omimvo 10, Ominista oyi na okuzimina eningululo ndika.

OSHI TOPOLWA 35: OMAUTHEMBA NGOKA GE LI PO NALE OKUKALA MEVI LYAAYEHE.

Oshitooplwa shika otashi ungaunga nomauthemba okukala mevi lyaayehe ngoka ge li po nale pethimbo ndyoka Oveta tayi tameke, ngoka inaya taambiwa ko paveta yopamuthigululwakalo, ihe oga gandjwa kelelo lyontumba nenge oveta. Oshiholelwa sholudhi nduka lwomauthemba ogo (Eziminino Okukala Pehala/Evi). Tala Annexure 4 yelandulathano lyokuninga eindilo oshowo Ompango onti-17 omolwomaueyelele kombinga yelandulathano lyeindilo.

Oveta ompe otayi ungaunga ngiini nomauthemba ngaka?

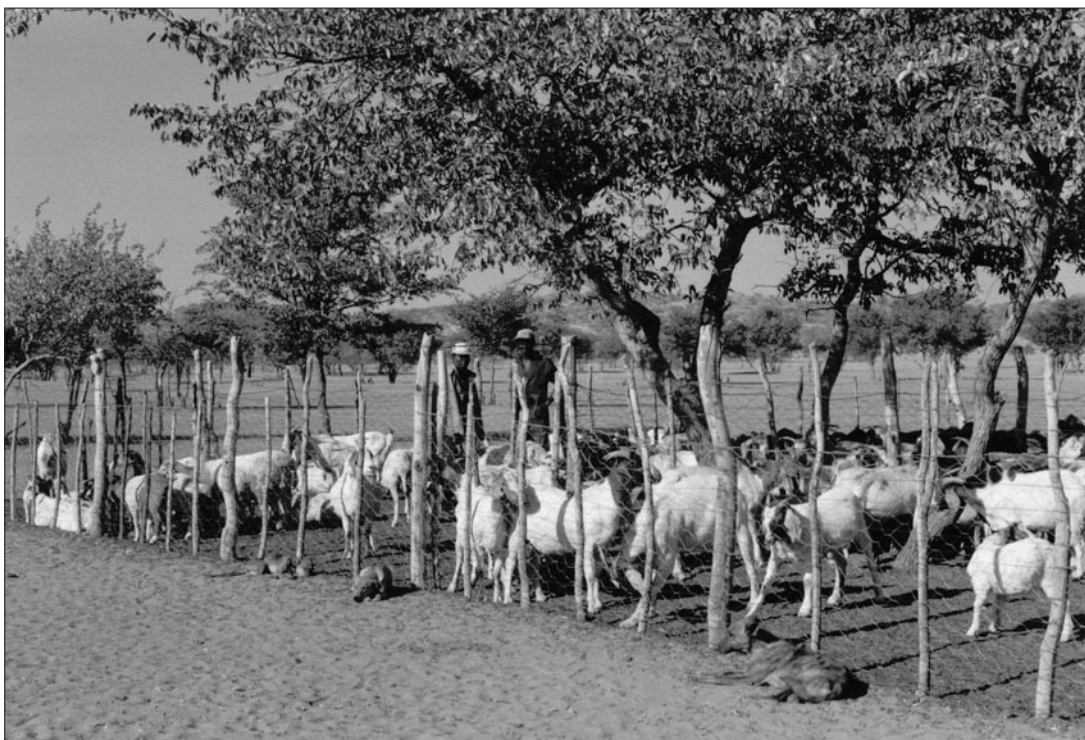
Ooyene yuuthemba otashi vulika ya tsikile nokukala pehala/evi ndyoka pamautho ga faathana nomaukwatya ngoka ga longithwa omanga Oveta ndjika inayi ya po sigo:

- uuthemba wa taambiwa ko, nuuthemba womukalo gokuhiila tau gandjwa,
- eindilo lyomuntu li nasha nevi lya tindwa mokuninga eindilo,
- omuntu a tinda nenge a ndopa okutaamba ko uuthemba womukalo gokuhiila, nenge
- evi tali shunwa miikaha yEpangelo.

Etseyitho koshigwana kOminista oli na okunyanyangidhwa moGazzete yEpangelo oshowo omukalo kehe tagu longo ngoka gwa dhiladhilwa kOminista.

Mwene guuthemba oku na okuninga ngiini opo a lundulule uuthemba mboka e na nale Paveta ndjika?

Omuntu ngoka ta ti oku na uuthemba nale oku na okuninga eindilo kOlaata yEyi lyAayehe opo uuthemba mbuka wu taambiwe ko paveta.



limuna yongushu ya nkundipala otashi vulika tashi etithwa kiyakulitho yopaunafalama ya nkundipala.

Oonkatu tadhi landula odhi na okulandulwa uuna taku ningwa eindilo lyetaambiwoko/simaneko lyuuthemba:

1. Eindilo oli na okuninga mofoloma ya uthwa (Ofoloma 8) nopamukalo. (Tala Ompango onti-17 omolwomauyelel ga gwedhwa po).
2. Eindilo oli na okuukithwa kOlaata yEvi lyAayehe ndjoka yi nasha noshitopolwa moka na evi/ehala ndyoka lya halelwa uuthemba.
3. Eindilo oli na okuninga muule wethimbo lyontumba. Ominista otayi ka tseyitha esiku moka aaningi yomaindilo guuthemba ye na okuninga omaindilo gawo gomauthemba ga taambiwe ko, nokuza esiku ndyoka aantu otaya ka kala noomvula ndatu okuninga omaindilo. Ominista otashi vulika yi lelepeke ethimbo ndika pakugandja etseyitho koshigwana shi nasha noshinima shika.

Omuntu ngoka e na nale uuthemba otashi ningile shike eindilo?

Omuningi gweindilo otashi vulika a ninge eindilo:

1. Lyetaambiwoko/simaneko lyuuthemba mboka e na nale.
2. Okupewa uuthemba womukalo gokuhiila.
3. Ehala uuna li li nale mondhalate, ota ningi eindilo lyepitikilo okukaleka po ondhalate, ngele omuningi gweindilo osho a hala.

Oshike shi na okukwatelwa meindilo lyetaambiwoko lyuuthemba pashitopolwa shika?

1. Omikanda kehe dhuumbangi okuyambidhidha eindilo, oshiholelwa, ombapila kOminista ndjoka tayi ti omuntu oku na uuthemba okukala mevi/ehala moka mu na omudhina gwomeya/edhiya.
2. Ombapila mu na omauyeleele ga uthwa okuza kElenga nenge Olaata yOpamuthigululwakalo yoshigwana shontumba shokomikunda moka evi/ehala li li.
3. Omauyeleele kehe ga gwedhwa po nenge omikanda ngaashi tadhi pulwa kOlaata.

• *Omauyeleele ga uthwa ogeni?*

Oveta otayi vulu okugandja uuyeleele womauyeleele ngoka taga pumbiwa okutula miilonga iitopolwa yayo. Omauyeleele otaga pumbiwa okuza kElenga nenge Elelo lyOpamuthigululwakalo okutokola eindilo lyokusimaneka/taamba ko nokunyolitha ngashi tashi popiwa moompango. Oompango otadhi pula omauyeleele taga landula:

1. *Edhina lyomuningi gweindilo*
2. *Ondjeleka yuunene wevi/ehala*
3. *Edhina lyoshitopolwa shokomikunda*
4. *Oshitopolwa*
5. *Elongitho lyevi/ehala*

lilanduli yashike yi li po mokundopa okuninga eindilo lyeziminino lyeindilo negandjo lyuuthemba womukalo gokuhiila meni lyethimbo lya uthwa?

Ope na ilanduli ya simana ngele omuntu okwa ndopa okuninga eindilo meni lyethimbo lya uthwa opo uuthemba we wu simanekwe/taambiwe ko.

1. Omuntu ita ka pitikwa we okuninga eindilo lyetaambiwoko lyuuthemba. Monkalo ndjika, omuntu ota ka talika ko a etha po/a kanitha eindilo lye li nasha nevi/ehala.
2. Evi/ehala ndyoka otali galukile miihaka yEpangelo. Shama evi lya shuna kEpangelo, nena otali ka kala tali vulu okugandjwa po pamautho gOveta.

Koneka:

Oveta otayi pitika omuntu a ninge eindilo kOminista opo ethimbo lyeindilo lyetaambiwoko lyuuthemba wevi lye li lelepekwe, ihe omatompelo omawanawa oge na okugandjwa opo ga yelithe kutya omolwashike eindilo lya ninga kwatoka. Ominista otashi vulika yi tokole okugandja elelepeko ndika.

Oonkondo dhini Olaata yEvi lyAayehe yin a uuna eindilo pashitopolwa shika tali taambiwa ko?

Olaata yEvi lyAayehe otashi vulika:

1. Okuya mekwatathano/moonkundathana naantu.
2. Okutaamba ko olopota ya ningwa kokomitiye kokukonakonga pautho lyoshitopolwa 37. (Tala oshitopolwa 37).
3. Okukonakona oshinima nokumona omauyebele ge nasha neindilo lyomuntu. Shika otashi vulu okukwatela mo omauyebele taga landula:
 - Esiku moka omuningi gweindilo a mona uuthemba nopamukalo ngoka uuthemba e u mona.
 - Oshowo ngele ope na omuntu gulwe e na nale uuthemba woshipambu shoka shevi.
 - Oshowo ngele uunene wevi otau iyutha kuunene welongitho lyevi ndyoka.
 - Omuthika goongamba niindhindhilikitho ya tenda ko evi.
 - Ngele evi olya tulwa menkolo/ondhalate, oshowo omauyebele ge nasha nondhalate/enkolo.

Oshike hashi ningwa po uuna Olaata ya mbilipalelwa nongushu yeindilo lyomuntu?

Olaata oyi na okuninga ngeyi pamushangwa:

1. Okugandja uuthemba womukalo gokuhiila shi nasha nevi ndyoka.
2. Okuyelitha mo omaukwatya ge nasha nuuthemba dhomukalo gokuhiila.
3. Okuyelitha mo uulethimbo moka eindilo li na okutaambiwa ko, ethimbo ndyoka li na okukala omasiku inaga konda 90 konima eindilo lya ningwa.
4. Okutsyithila omuningi gweindilo kutya ngele okwa tinda shoka a pewa nenge a ndopa oku shi taamba ko muule wethimbo lya uthwa, uuthemba wevi ndyoka otau ka hulithwa po.

Omuningi gweindilo oku na ihe okunyolithwa omukalo gokuhiila nOlaata pamautho gOshitopolwa A shOfoloma 9 (wuuthemba womukalo gokuhiila) oshowo Oshitopolwa B shOfoloma 9 (shomalalakano gopaunamapya pondje yoshitopolwa shi ikalekelwa). Tala Ompango onti-19 shi nasha noshinima shika.

Oshike hashi ningwa uuna omuntu a tinda okutaamba ko shoka a pewa shi nasha nomukalo gokuhiila nenge a ndopa oku gu taamba ko muule wethimbo lya uthwa?

1. Omuntu ota kanika eindilo lyevi.
2. Evi otali shuna kEangelo.

Oshike hashi ningwa po uuna Olaata inayi mbilipalelwa kongushu yeindilo nenge uuna pe na omaindilo taga kondjithathana shi nasha nevi limwe?

Olaata:

1. Oyi na okwiithana iihokolola okutopokonona oshinima. Ompango onti-18 otayi yelitha omukalo moka iihokolola yi na okuningwa.
2. Otashi vulika okuninga etokolo li li pauyuuki. Etokolo ndyoka otashi vulika li kwatele mo:
 - Okukoleka eindilo (okuzimina eindilo)
 - Okukoleka eindilo ihe oshi ikwatelela komayoolokathano, ngaashi uunene noongamba dhi nasha neindilo.
 - Okutinda eindilo. Olaata kayi na oshinakugwanithwa shokutinda eindilo. Nonando inayi shilipalelwa ongushu yeindilo, Olaata otashi vulika yi tokole okupa omuningi gweindilo uuthemba womukalo gokuhiila, kutya nee ou nasha nevi olyo tuu ndyoka (nenge oshitopolwa shevi ndyoka) shi nash nevi tali indilwa, nenge oshipambu shilwe shevi.

Omuthika guni shi nasha neindilo lyethembapaleko okukaleka po ondhalate/enkolo li li po nale uuna omuntu e na nale uuthemba okukala mevi lyopamuthigululwakalo?

Olaata oyi na okugandja uuthemba okukaleka po enkolo/ondhalate, ngele Olaata oya mbilipalelwa kutya:

1. Enkolo nenge oondhalate okwa li dha dhikwa po paveta nenge pazimino lyelelo lyopaveta.
2. Ondhalate itayi ngambeke nenge okukeelela elongitho oshowo omauwanawa gaayehe gaakwashigwana pomukunda/oshigwana shontumba.
3. Ope na omatompelo omawanawa kutya omolwashike omuningi gweindilo e na okupitikwa a kaleke po ondhalate.

Olaata otashi vulika yi tule po omaukwatya uuna tayi pitika ekalekopo lyondhalate.

Oonkalo dhini tashi vulika uuthemba womukalo gokuhiila wu hulithwe po?

1. Omatompelo gehulithopo otaga ka yelithwa meinyolitho lyomukalo gokuhiila. Ndjika oyo euvathano/okondalaka pokati komuntu tayi ningi eindilo lyomukalo gokuhiila nOlaata.
2. Olaata otashi vulika wo yi hulithe po uuthemba womukalo gokuhiila, ngele mwene guuthemba wokuhiila okwa ndopa okwiiyutha kiinakugwanithwapo, nenge ita vulika komangambeko ga tulilwa po elongitho lyevi.
3. Tala wo oonkundathana koho yoshitopolwa 32 pombanda shi nasha nOmpango 15, ndjoka tayi pitika omatompelo ga gwedhwa po moka uuthemba womukalo gokuhiila tau vulu okuhulithwa po.

ONTOKOLWA V IINIMA YAKWALUKEHE MBYOKA YA PITIKWA

Ontokolwa ndjika omu na iinima mbyoka ya pitikwa omolwiilonga yopambelewa yi li hwepo oshowo etulomiilonga lyOveta.

OSHIPOLWA 37: OMAKONAKONO GOPETAMEKO GWEINDILO LYOMAUTHEMBA NGOKA GE LI PO.

Pashitopolwa 37, Ominista, mekwatathano nOlaata yEvi lyAayehe, otashi vulika Olaata yi tote po okakomisi komakonakono hoka ke na okukwatela komeho omakonakono gopetameko nokungonga po omushangwahokololo gwako gomauelele ge na okupewa Olaata.

Omakonakono gopetameko ohaga vulu okuningwa shi nasha nomauthemba gevi lyopamuthigululwakalo nomauthemba galwe gokukala mevi lyaayehe ga kala po pethimbo ndyoka Oveta ta tameka iilonga, nonando pe na iinima mbyoka ya pitikwa kiitopolwa 28 oshowo 35.

Omakonakono ngoka gopetameko otaga vulu okuningwa paidilo lyOlaata uuna Olaata inayi tokola eindilo shi nasha nevi ndyoka li niwe, lya longithwa nenge ngele hasho tali kondololwa komuntu nolya tulwa mondhalate, nonando inapu ningwa eindilo li nasha netaambeko lyomauthemba ngoka ge li po.

Oompango 20-23 otadhi gandja omauelele ogendji shi nasha nuukomitiye gokukonakona oshowo okuninga omakonakono gopetameko.

Ekonakono lyopetameko otali ningwa okumona mo omaukwatya dhi nasha:

- okukala mevi, elongitho nenge ekondololo lyevi komuntu gwontumba;
- okukala po kondhalate kevi; oshowo
- oshinima shimwe shoka Olaata yoyene tashi vulika yi konakone paitopolwa mbyoka nenge mbyoka tashi vulika yi ulikwe kOlaata.



Omapendulopo ga ningwa mevi/ofaalama, ngaashi ndjika "Ou Poppie se plaas" popepi nomukunda Omatako, otashi vulika ga futilwe ngele uuthemba wesi owa pewa po omuntu gulwe. Ethano koWIMSA.

Omlandulathano geni ge na okulandulwa kokomitiye yokukonakona shi nasha nekonakono lyopetameko?

Oveta otayi yelitha mo omlandulathano ge na okulandulwa shi nasha nekonakono lyopetameko.

1. Okutseyithila omuntu ngoka ta konakonwa

Omunashipundi gokomitiye yekonakono oku na okugandja omasiku 30 getseyitho li nasha nekonakono lyopetameko komuntu ngoka eindilo lye tali ka konakonwa, pakulongitha Ofoloma 10. Etseyitho ndika oli na okukwatela mo omauyelele taga landula:

- ethimbo nehala lyekonakono lyopetameko.
- etseyithilo kutya oku na okuholoka komakonakono gopetameko a pulwe kombinga yiinima ya tumbulwa pombanda, oshiholelw okukala mevi, elongitho nekondololo lyevi, ondhalate yi li kevi nenge oshinima kehe shoka tashi vulika shi pulwe kOlaata.
- Etseyithilo kutya omuntu na etelele omambo nenge omikanda dhini dhi nasha niihokolola yekonakono lyopetameko.

Omunashipundi oku na okushaina etseyitho, netseyitho oli na okufalwa komuntu pamukalo ngoka gwa uthwa paveta. Ngele omuntu okwa ndopa okuholoka pekonakono lyopetameko, okomitiye yomakonakono oyi na oku shi tumbula shika momushangwahokololo gayo.

2. Okwiithana oombangi

Okulongitha Ofoloma 11 yOompango, omunashipundi gokakomitiye komakonakono otashi vulika i ithane aantu taya landula ya holoke pomapulakeno gekonakono lyopetameko:

- Elenga
- omuleli kehe gopamuthigululwakalo gwoshigwana shontumba, nenge
- omuntu kehe ta vulu okugandja omauyelele koshikundathanwa shomakonakono gopetameko, nenge ngoka e na omukanda nenge embo, e na sha sha guma omakonakono. Embo nenge omukanda ngoka gu na omaumbangi ugu na okugandjwa piihokolola mpoka.

Omunashipundi oku na okushaina omaithano goombinga, noge na okufalwa komuntu ngoka pamukalo gwa uthwa. Omaithano kiihokolola oge na okutseyithila oombangi ethimbo nehala mpoka tapu ka ningilwa iihokolola.

Omayono geni oombangi dha ithanwa tadhi vulu okuyona?

Oombangi otadhi vulu okukaulonyanga paveta ngele:

- *Inaya holoka komeho gokakomitiye komakonakono pethimbo nehala ya tumbulwa.*
- *Inaya kala pomakonakono sigo ya pitikwa ye shi ninge komunashipundi.*
- *Oya tindi okuninga egano lyopaveta nenge ekoleko.*
- *Konima yokugana nenge ekoleko, ongele:*
 - *ya ndopa okuyamukula omapulo shi ihwapo nenge taga mbilipaleke.*
 - *taya gandja uumbangi wiifundja.*

Ngele okwa kwatwa shi nasha nomayono ngaka, omuntu ota vulu okupewa egeelo N\$1 000 nenge ondhologo yethimbo inali konda oomwedhi ndatu.

3. Okuninga iihokolola

Pethimbo lyiihokolola, omalandulathano taga landula oge na okulandulwa:

- Okomitiye otashi vulika yi pule oombangi pakugandja nenge okukoleka paveta.
- Okomitiye otashi vulika yi konakone nenge yi pungule omambo nenge omikanda kehe dhi konakonwe nenge dhi pungulwe megameno, shampa ashike omuntu ta pewa okambapila ke nasha nembo nenge omukanda gwa gandjwa komuntu ngoka.

4. linima mbyoka ya monika po kokomitiye yomakonakono

Okomitiye yomakonakono otashi vulika yi mone kutya oshi li nawa Olaata yi zimine mbala ngaashi tashi vulika eindilo lyomuntu shi nasha nevi (nenge enkolo/ondhalate otayi vulu okukalekwa kevi).

Ngele oshi li ngeyi, okomitiye yomakonakono oyi na okulombwela omuntu a longekidhe okuninga eindilo pashitopolwa 28 (2) nenge 35 (2), nokugandja eindilo lye komunashipundi gokomitiye yomakonakono muule wethimbo lyontumba, ngoka taka tuma oshinima kOlaata.

Ngele omuntu okwa ndopa okwiiyutha kelombwelo a pewa kokomitiye yomakonakono shi nasha noshinima shoka, okomitiye oyi na oku shi tumbula shika molopota yayo.

Oshike hashi ningwa po uuna omuntu a ndopa okuholoka pomakonakono gopetameko nenge a ndopa okwiiyutha kelombwelo okulongekidha nokugandja eindilo komunashipundi gokomitiye yomakonakono?

Shampa oshinima sha lopotwa kOlaata, Olaata otayi longitha Ofoloma 12 okuninga ngeyi:

- Okutseyithila omuntu shi nasha lopota yokomitiye yomakonakono kombinga yoshinima shoka.
- Okulombwela paveta omuntu i iyuthe kethimbo lya tulwa niinakugwanithwa ya tumbulwa metseyitho.
- Okutseyithila omuntu kutya ngele okwa ndopa okuninga ngawo (pwaa na etompelo ewanawa) okwiiyutha ketseyitho lyelombwelo, Olaata otayi utha paveta kutya eindilo lye ka li na we ongushu shi nasha nevi ndyoka.

lilanduli yini yokukala wa kanitha ongushu yeindilo?

Omuntu ngoka a talika ko paveta eindilo e li kanitha/nenge ka li na we ongushu:

- *Ke na we uuthemba okuninga eindilo tali taambiwa ko nokunyolitha omaindilo ge paitopolwa 28 (2) nenge 35 (2).*
- *Ota hulitha po okukala neindilo nenge nevi ndyoka nenge okudhika nenge okutula sha kevi ndyoka.*

lilanduli mbika ohayi vulu okukala po nonando ethimbo lyomaindilo paitopolwa 28 (2) nenge 35 (2) inali kwisha.

OSHI TOPOLWA 38: ELUNDULULILO LYOMAUTHEMBA

Oshitopolwa shika otashi ungaunga nompito okulundululila omauthemba gevi lyopamuthigululwakalo nenge omauthemba gomukalo gokuhiila kaantu yalwe. Ngele omuntu ngoka oye kwa li a pewa tango uuthemba wevi lyopamuthigululwakalo okwa hala okulundululila uuthemba mbuka komuntu gulwe, oku na okulandula omalandulathano ga yelithwa mOmpango 24, nokulongitha oofoloma 13 nenge 14 ngashi tashi uthwa.

Olye e na okugandja ezimino uuna omuntu a hala okulundulula uuthemba wevi lyopamuthigululwakalo nenge uuthemba womukalo gokuhiila?

1. Shi nasha nelundululo lyuuthemba wevi lyopamuthigululwakalo, Elenga nenge Elelo lyOpamuthigululwakalo oli na okugandja ezimino pamushangwa.
2. Shi nasha nelundululo lyuuthemba womukalo gokuhiila, Olaata yEvi lyAayehe oyo yi na okugandja ezimino pamushangwa.

OSHIPOLWA 39: OMATALULULO GOMATOKOLO

Paempito dhimwe aantu ohashi vulika ya kale inaya nyanyukilwa omatokolo gElenga, Elelo lyOpamuthigululwakalo nenge nokuli Olaata yEvi lyAayehe. Ngele osho shi li ngawo, aantu oye na uuthemba okuninga omatalululo ge li ompinge nomatokolo ngoka. Omukalo nguka otagu wilikwa kOmpango 25. Osha simana okukoneka kutya etalululo lyetokolo lyontumba oli na okuningwa muule womasiku 30 sho etokolo lya ningwa, nenge omasiku 30 gokutseya etokolo ndyoka omuntu a hala li talululwe. Omuyalu goodola – N\$25.00 ogu na okufutwa shi nasha netalululo lyetokolo. Uuna omuntu ta talululitha etokolo, Ominista oyi na okuulika olutu lwokupulakena etalululo lyetokolo lyontumba.

Olutu lwokutalulula etokolo otalu ka thikama po awike momuntu gumwe nenge omuyalu kehe gwaantu ngaashi ya ulikwa kOminista. Ngele ope na iilyo yi vulithe omuntu gumwe yolutu lwetalululo lyetokolo, Ominista otayi ka ulika Omunashipundi. lilyo mbika yolutu lwetalululo lyetokolo oyi na okukala yowino nomaunongo gi ihwapo okuninga eutho li nasha netalululo lyetokolo.

Ngele oshilyo sholutu lwetalululo lyetokolo ihashi longo mepangelo, otapu ningwa omalongekidho giifuta kiilyo mbyoka omolwomayakulo ya gandja.

lilyo ayihe yolutu ndoka oyi na okuholoka piihokolola pamuyalu gwi ihwapo nokuninga etokolo li na ongushu. Omatokolo otaga ningwa pamawi goyendi. Mpoka omuyalu gomawi ogendji inagu yela nawa, omunashipundi oku na ewi lya gwedhwa po, ndyoka ta vulu okulongitha ku ningwe etokolo. Shika ohaku tiwa ewi lyokukutha omasipa pokati koombwa – ewi lyehangukununo.

Oonkondo dhini dhi niwe kolutu lwetalululo lyetokolo?

Olutu lwetalululo lyetokolo otalu vulu:

- Okukoleka etokolo.
- Okukaleka manga etokolo.
- Okulundulula mo sha metokolo.
- Okuninga elombwelo kehe lyopaveta ndyoka tali opalele.

OSHIPOLWA 40: OKUFUTILWA SHI NASHA NOMAPENDULOPO

Omathimbo gamwe aantu ohaya ningi omapendulopo gwontumba mevi/ehala. Oshiholelwa, otashi vulika ya tunga mo ondaama nenge omboola yomeya mevi moka. Oshitopolwa shika otashi wilike oshinima shomapendulopo ga ningwa mehala/evi.

Pakwalukehe, kape na omuntu a ninga eindilo li li ompinge nElenga, Elelo lyOpamuthigululwakalo, Olaata yEvi lyAayehe nenge Epangelo shi nasha nomapendulopo ga ningwa mevi ndyoka li niwe pauthemba wevi lyaayehe nenge pamukalo guuthemba wokuhiila.

- Kape na ta kutha mo omapendulopo, nenge ta hanagula nokuyonagula omapandulopo kehe uuna ta thigi po ehala/evi. Olaata, konima yoonkundathana nOminista otashhi yi ka gandje ezimino lyokukutha mo omapendulopo/iinima mbyoka.
- Omuntu ngoka oye mwene guthemba wevi lyopamuthigululwakalo nenge uuthemba womukalo gokuhiila, ngoka a hala okulundululila uuthemba mbuka komuntu gulwe, otashi vulika ya uvathane nomuntu ngoka e mu futile omapendulopo ngoka a ninga pehala/evi.
- Ominista, konima yoonkundathana nOlaata, otashi vulika ya futile omuntu omapandulopo ngoka ga simana, sho uuthemba wevi lyopamuthigululwakalo nenge omukalo guthemba wokuhiila tau hulithwa po. Shika itashi ningwa ngele iifuta oya ziminwa nale pokati kaambaka yaali sho taya lundulula omauthemba ga tumbulwa pombanda, nenge ngele iifuta yomapendulopo ngoka oya ningwa okugandja po evi lya tumbulwa palandulathano ngaashi tali landula moshitsa pevi.
- Efulilo lyomapendulopo ga simana oli na okufutwa okuza moshimaliwa shi nasha nekuthoko lyevi kOparliamende.
- Ngele egandjopo lya hula nokuzimininwa omuntu gulwe, Olaata otayi tula po omaukwatya kutya omuntu gwahugunina oku na okufuta omuyalu gwontumba gu nasha nomapendulopo ga ningwa pehala/evi pethimbo lyo ku li pewa. Ngele Olaata oya taamba ko oshimaliwa shika, oyi na oku shi futa komuyalu goshimaliwa shi na okupewa mwene guthemba omukulu omolwomapendulopo ngoka a ninga pehala/evi. Ngele aantu mbaka yaali okwa li nale ya uvathana kombinga yofuto yomapendulopo, nena eutho ndika itali longithwa we.
- Omuyalu gwiifutwa yi na okugandjwa ugu na okuuthwa pauvathano pokati kOlaata yEvi lyAayehe nomuntu ngoka, nomuyalu ngoka ugu na wo okuzimininwa kOminista. Ngele kape na euvathano, nenge Ominista ina zimina omuyalu ngoka, nena oshinima oshi na okutumwa kolutu lwokupotokonona iinima.
- Mpoka oshimaliwa sha futwa shi nasha nomapendulopo ga simana okuza mOshiketha shEpangelo, Oveta otayi utha efulilopo lyoshimaliwa shoka sha za mOshiketha shEpangelo moonkalo dhontumba. Shika otashi ka ningwa ngele Olaata oya pula omuntu ngoka e na okupewa evi a fute shi nasha nomapendulopo ga ningwa pehala/evi. Shampa Olaata ya mono eshilipaleko ndika, oyi na okufuta omuyalu gu thike pamwe nomuyalu ngoka gwa futulwe okuza mOshiketha shEpangelo opo gu shune mOshiketha. Ngele omuyalu gwa monika po omushona gu vulike kungoka gwa futwa, Ominista otashi vulika yi gu taambe ko, pazimino lyOminista yilimaliwa, efulilopo lyoshimaliwa shomuyalu omushona.

OSHI TOPOLWA 41: ETALELOKONAKONO LYEVI LYAAYEHE

Oshitopolwa 40 otashi pitike Olaata yEvi lyAayehe yi uthe etalelokonakono lyomavi gaayehe, okuningwa omathano taga thanekwa oshowo oopulana dhiitopolwa mbika. Etaalelokonakono lyoshitopolwa oli na okuningwa pandungethaneko ndjoka yi na okulongekidhwa palongelokumwe nElelo lyOpamuthigululwakalo lyoshitopolwa shoka. Omalongekidho otaga ningwa wo shi nasha nomalundululo giipambu yontumba yehala/evi (okugwedhwa nokukuthwa oshipambu), shi ikwatelela kofuto nokufutilwa pauyuuki, oshowo okulongekidha ondungethaneko pamukalo tagu opalele notagu longo nawa.

OSHIPOLWA 42: ITAKU KA TALWA KOSHIMALIWA ANDOLA MOKUZIMINA UUTHEMBA WEVI LYOPAMUTHIGULULWAKALO

Itaku ka talwa kegandjo lyasha, kutya nee oshimaliwa nenge iinima yontumba, tayi pulwa nenge tayi taambiwa ko komuntu kehe ongefutulo sho omuntu a pewa uuthemba wevi lyopamuthigululwakalo.

Oshitolwa shika itashi popi:

- Efutulo lyomapendulopo ngoka tashi vulika ga futilwe pamautho goshitolwa 40.
- lifuta kehe nenge oshimaliwa shilwe shoka tashi uthwa moompango dhi nasha nomaindilo gomauthemba gevi lyopamuthigululwakalo nenge omauthemba gomukalo gokuhiila, nenge egandjo lyomukanda kehe nenge onzapo pamautho gOveta ndjika.

Ofuto yini ya pitikwa Paveta ndjika?

1. *Elenga X otali lombwele Erastus kutya otali ke mu pa uuthemba woshitolwa shokudhika egumbo, shampa ashike kutya Erastus te mu pe oongombe ntano.*
2. *Petrus okwa hala okulundululula uuthemba we womukalo gokuhiila kuHendrina, Petrus naHendrina oye shi uvathana kutya Hendrina ote ke mu futa oshimaliwa sha gwedhwa po N\$25 000 omolwomatungo gaali ngoka Petrus a tunga pehala/evi ndyoka.*
3. *Ngele Anna okwa hala okuninga eindilo lyetaambiwoko neinyolitho lyuuthemba wevi mboka e na nale, Olaata yEvi lyAayehe tayi mu lombwele kutya eindilo lyoyene otali kotha N\$50, negandjo lyonzapo yeinyolitho otayi futilwa N\$100. (Omiyalu dhika odhi li ashike ongiiholelwa)*

Omayamukulo:

1. *Inashi pitikwa. lifuta ayihe mbyoka ekengelelo lyopaumbudhi.*
2. *Osha pitikwa. Oshitolwa 40 (2) osha pitika ofuto yoshimaliwa shontumba shi nasha nomapendulopo ga ningwa pehala/evi.*
3. *Osha pitikwa. Oshitolwa 42 (2) osha pitika kutya oshimaliwa niifuta otashi vulika shi yi futithweshi nasha nomaindilo oshowo egandjo lyoonzapo nomikanda dhopambelewa.*

OSHIPOLWA 43: OKUKALA MEVI LYAAYEHE SHAA LI PAVETA.

Omavi gaayehe otashi vulika mu kale omuntu nenge li longithwe awike uuna uuthemba wokukala nokulongitha evi ndyoka tau gandjwa Paveta ndjika. Shika osha kwatela mo omauthemba gevi lyopamuthigululwakalo ngoka ge niwe nale (pashitolwa 28) oshowo omauthemba galwe ngoka ge li po okulongitha evi lyaayehe (pashitolwa 35).

Omuntu ngoka e li mevi lyaayehi kee na uuthemba, otashi vulika a tidhwe po. Elenga, Elelo lyOpamuthigululwakalo, nenge Olaata yEvi lyAayehe otashi vulika yi longekidhe ekatukonkatu lyopaveta okutidha po omuntu ngoka.

OSHIPOLWA 44: OONDHALATE/OMANKOLO

Oveta ndjika otayi indike edhiko lyenkolo/ondhalate ompe oshowo okukaleka po omankolo pwaa na eziminino Paveta ndjika. Pamautho goshitolwa 44, ngele omuntu ota dhike enkolo/ondhalate ompe nenge oku yi kaleka po konima yomasiku 30 sho a ningi eindilo lyeziminino okukaleka po ondhalate lya tindwa, omuntu ngoka okwa pogola eyono lyopashikoya.

Omageelo geni omape ge nasha nomankolo Paveta ndjika?

1. Okudhika ondhalate ompe pwaa na eziminino Paveta.
2. Okukaleka po ondhalate omasiku ga konda 30 konima sho omuntu a ningi eindilo lyeziminino okukaleka po ondhalate pamautho goshitopolwa 28 (2)(b) negne 35 (2)(b), eindilo lye lya tindwa.

Oveta otayi utha omageelo meyono ndika, ngaashi ofuto yopombanda N\$4 000 nenge omvula yimwe mondholongo nenge ayihe iyali. Megwedhopo, ngele omuntu okwa tinda natango okukutha ko ondhalate ye, konima yokupewa egeelo lypogolo, omuntu ngoka ota monika ishewe ondjo sho ondhalate ye ine yi kutha ko, shoka hashi vulika a futithwe N\$50 mesiku kehe ndyoka ondhalate ndjoka tayi kala inayi kuthwa ko.

Eindilo lyeziminino okudhika ondhalate/enkolo epe oli na okuningwa mOfoloma 15 oshowo pamautho gOmpango 27. Kape na eziminino lyokudhika ondhalate lya pumbiwa ngele mwene oku na nale uuthemba wevi lyopamuthigululwakalo nenge uuthemba womukalo gokuhiila, uuna a hala okutula ondhalate kegumbo lye, iigunda yoongombe, omatemba gokunwetha iimuna nenge komapya ge. (Tala Ompango 27 (3).

Oonkondo dhini Elenga, Elelo lyOpamuthigululwakalo nenge Olaata yEvi lyAayehe yi na uuna enkolo/ondhalate yi li kevi lyaayehe oyi li ompinge nomautho goshitopolwa 44?

Elenga, Elelo lyOpamuthigululwakalo nenge Olaata yEvi lyAayehe, tayi vulu okulandula omalandulathano ngaka:

- okukatuka onkatu ondhalate yi kuthwe ko,
- okweekelahi iilongitho ya longithwa okudhikitha enkolo/ondhalate.

limaliwa ayihe ya longithwa mokukutha ko ondhalate otashi vulika yi ka futwe komuntu ngoka a taaguluka omautho goshitopolwa shoveta shika shi nasha, okudhika nokukaleka po ondhalate/enkolo.

OSHIKETHA 45: OMAUTHOVETA

Pashitopolwa 45, Ominista otashi vulika yi tule po omauthoveta kombinga yoshinima kehe tashi pulwa nenge okupitikwa pamautho gOveta ndjika, shoka tashi shilipaleke etulomiilonga ewanawa lyoveta ndjika. Omauthoveta ngoka ga gandjwa, mokati kago omu na, ngoka ge nasha niilonga yokufula iikwamina momavi gaayehe (tala Ompango 30), eyomoshipala nekeelelo lyengushululo lyevi (tala Ompango 31), egameno lyoonzo dhuulithilo (tala Ompango 32) oshowo engambeko nekondololo lyiimuna mbyoka hayi lithwa. Ompango 33 otayi ungaunga niinima ngaashi oopate, oonzo dhomeya, iikuni nelongitho lyomeya, iikuni, eloya nomamanya mevi lyaayehe.

OSHIKETHA 46: EKUTHOPO LYOOVETA OONKULU

Ooveta dhika itadhi longithwa we moNamibia:

- Oveta yOshiketha shOmapendulopo nEvi, Oveta onti-18 yomumvo 1936
- Elundululo lyOveta yOshiketha shOmapendulolo nEvi, Oveta onti-17 yomumvo 1939
- Elundululo lyOveta yOshiketha shOmapendulopo nEvi, Oveta onti-18 yomumvo 1954
- Oveta ylinima yAavalelwa moSouth West Africa, Oveta onti-56 yomumvo 1954
- Elundululo lyOveta yOshiketha shOmapendulo nEvi, Oveta onti-73 yomumvo 1956

- Elundululo lyOveta yOshiketha shOmapendulopo nEvi, Oveta onti-41 yomumvo 1958
- Elundululo lyOveta yOshiketha shOmapendulopo nEvi, Oveta onti-110 yomumvo 1979
- Etseyitho lyopaveta yi nasha newiliko lyOshiketha shAaluudhe moSouth West Africa, ndjoka yOnomola AG 19 yomumvo 1978.

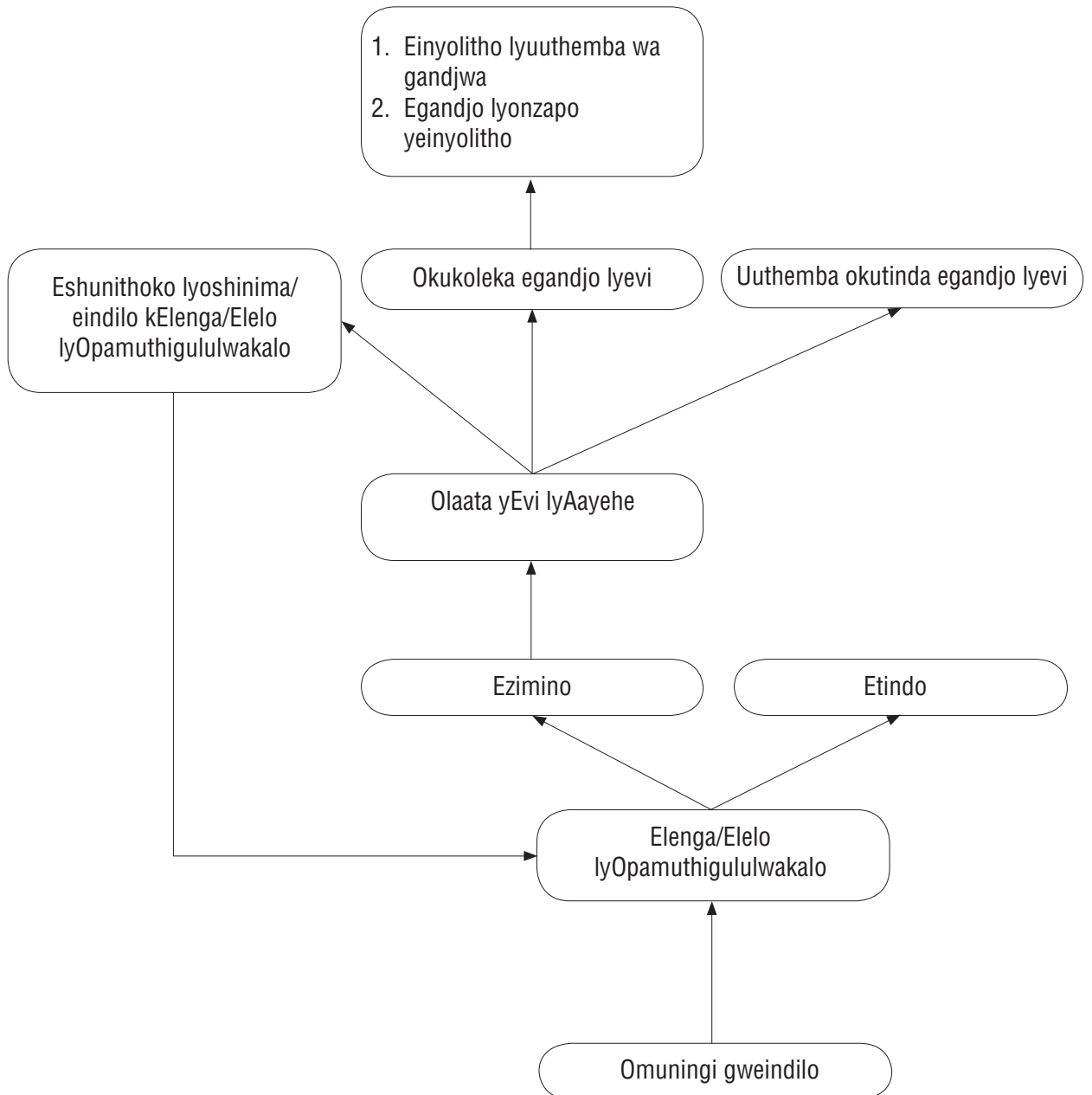
OSHIKETHA 47: EDHINA LYOVETA NETAMEKO LYAYO

Oveta ndjika otayi ithanwa Oveta yElundululo lyEvi lyAayehe, Oveta onti-5 yomumvo 2002. Oya tameka okuya miilonga sho ya nyanyangidhwa membo lyiinyanyangidhwa yEpangelo/Government Gazzete mesiku 1 Maalitsa 2003.

ANNEXURES

ANNEXURE 1

Elandulathano lyokuninga eindilo lyuuthemba wevi lyopamuthigululwakalo (tala oshitopolwa 22).



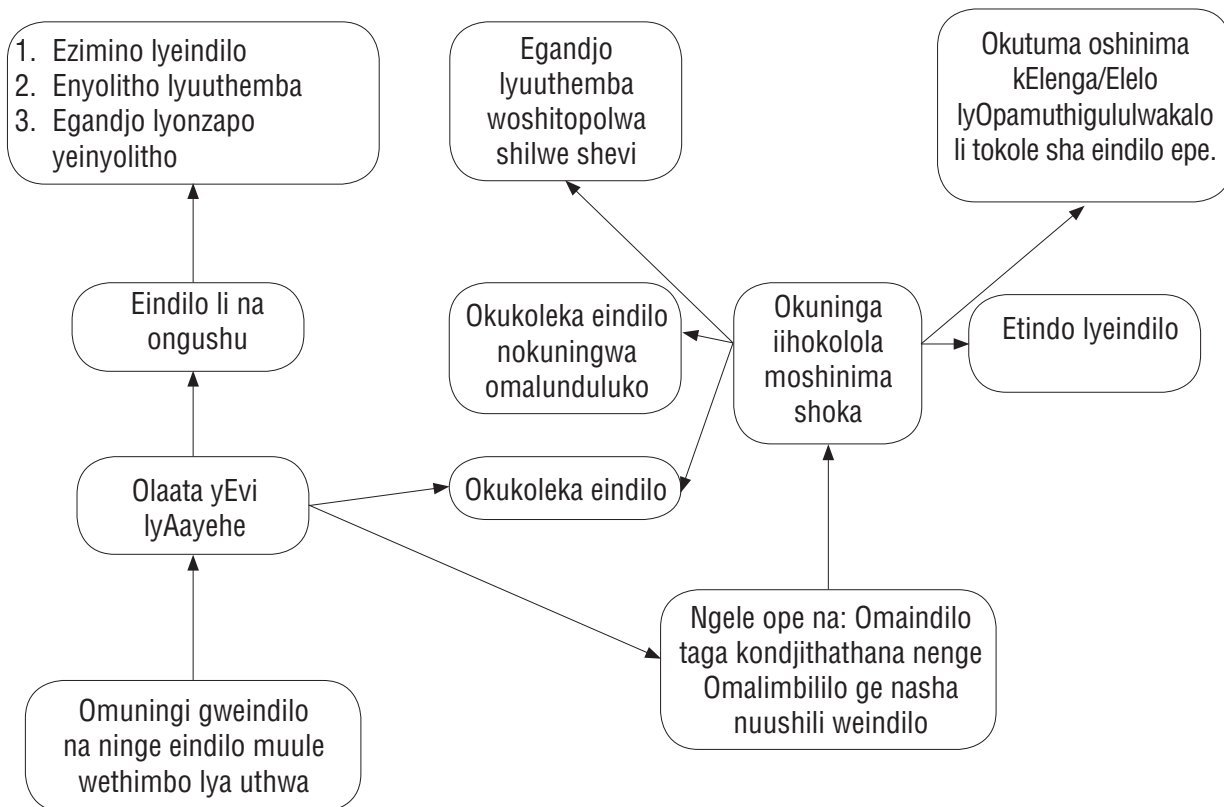
ANNEXURE 2

Elandulathano lyokuninga eindilo lyokutaambitha ko nokunyolitha omauthemba gevi lyopamuthigululwakalo ndyoka li niwe nale (tala oshitopolwa 28).

Elandulathano ndika otali longo ashike uuna nakuninga eindilo oye mwene guuthemba wevi lyopamuthigululwakalo mboka wa kala po nale pethimbo Oveta ya tameke okuya miilonga. Omathemba ngoka ge li po nale gevi lyopamuthigululwakalo oga kwatela mo:

- Uuthemba wepya/ehala okulonga uunamapya
- Uuthemba woshipambu shevi okutunga egumbo
- Uuthemba womukalo kehe gopamuthigululwakalo gwa taambiwa ko kOminista paGazzete yEpangelo.

Elandulathano ndika otali longithwa wo okuninga eindilo lyeziminino/okupewa uuthemba wokukaleka po oondhalate/omankolo ga kala po nale pomahala/omavi ngashi tashi uthwa kuuthemba wevi lyopamuthigululwakalo.



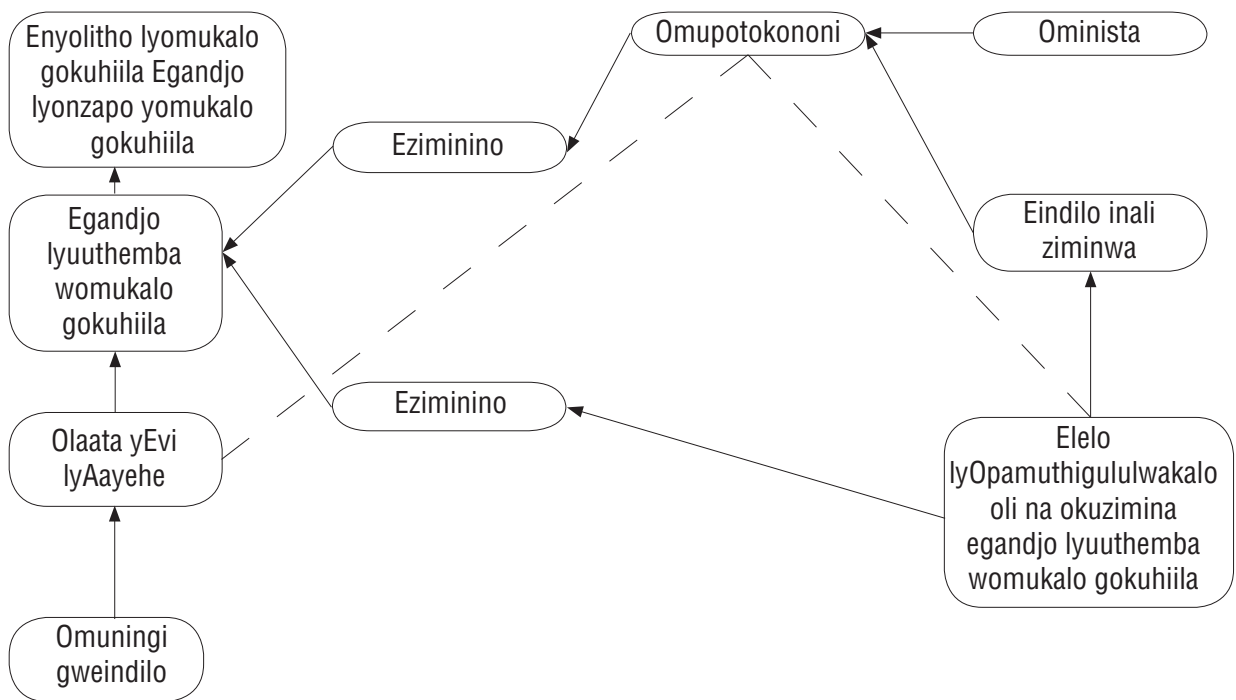
ANNEXURE 3

Elandulathano lyokuninga eindilo shi nasha nuuthemba womukalo gokuhiila (tala oshitopolwa 31)

Eindilo lyomauthemba gomikalo dhokuhiila oli na okutumwa kOlaata yEvi lyAayehe. Olaata otashi vulika ashike yi gandja uuthemba womukalo gokuhiila ngele Elenga nenge Elelo lyOpamuthigululwakalo olya zimine egandjo lyuuthemba mboka. Uuthemba womukalo gokuhiila wu nasha nomalalakano gopaunamapya otatu vulu ashike okugandjwa moshitopolwa showina, ihe ope na wo oompito dhimwe moveta ndjika.

Elelo lyOpamuthigululwakalo oshowo Olaata yEvi lyAayehe oye na okuzimina euliko lyomupotokononi ngoka a ulikwa kOminista.

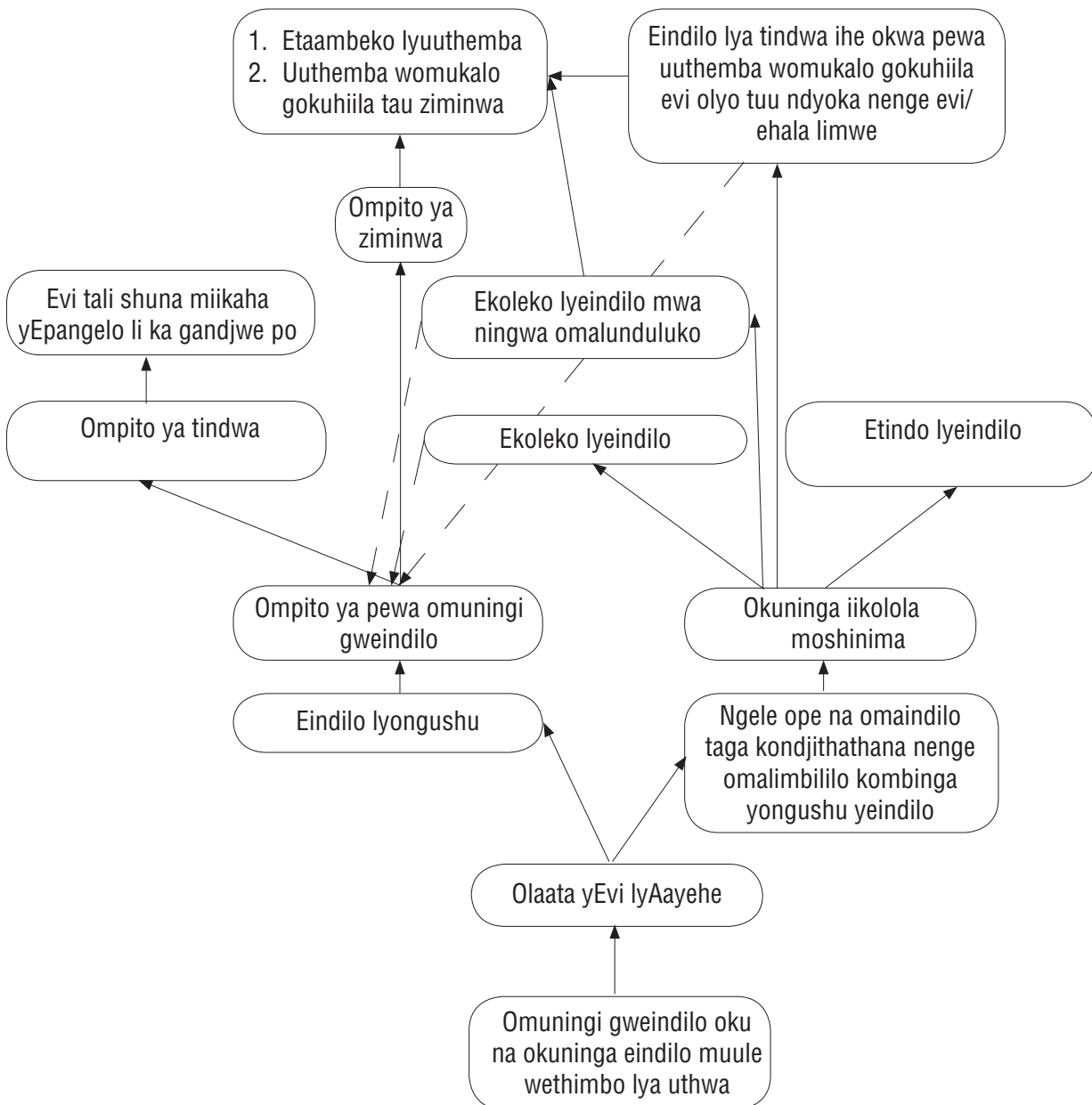
Inashi yela mo ngele omalandulathano ga faathana, ngaashi ngoka gegandjo netaambeko nenge etindo oge na okutuminwa omuningi gweindilo konima iihokolola yoshinima shoka ya ningwa, shi nasha nelimbililo kombinga yongushu yeindilo. Ngele omalandulathano ga faathana ogo ge na okulandulwa, omukalo otagu ka landula oondjila ngaashi tadhi ulikwa nuukuti mboka wa topoka pevi.



ANNEXURE 4

Elandulathano lyokuninga eindilo lyetaambiwoke lyomauthemba ge niwe nale okukala mevi lyayehe oshowo egandjo lyuuthemba womukalo gokuhiila (tala oshitopolwa 35).

Elandulathano ndika olya fa lyomauthemba (ihe gamauthemba paveta yopamuthigululwakalo) okukala mevi lyayehe ngoka ga kala po nale pethimbo Oveta tayi yi miilonga. Eindilo oli na okuningwa muule woomvula ndatu okuza esiku lya tseyithwa kOminista. Omuningi gweindilo oku na wo okulandula elandulathano ndika a mone eutho okukaleka po ondhallate/enkolo lya kala po nale, ndyoka lya dhikwa pehala/evi ndyoka tali ningilwa eindilo li mone uuthemba.



OMADHINA NOONDJUKITHI DHOMAHANGANO TAGA VULU OKUKWATATHANWA NAGO

likondo yepangelo tayi landula oshowo omahangano inaga yama kepangelo ohaga gandja omayakulo nomakwatho kombinga yOveta yElundululo lyEvi lyAayehe:

Centre for Research Information Action in Africa-Southern Africa Development & Consulting
(CRIA SA-DC)
P O Box 23778
Windhoek
Johan Albrecht Street, Windhoek West
Windhoek
Tel: (+264 61) 220117 / 225009
Fax: (+264 61) 232293
E-mail: criaawhk@iafrica.com.na
Web site: www.criaasadc.org

Desert Research Foundation of Namibia (DRFN)
P O Box 20232
Windhoek
7 Rossinni Street
Windhoek
Namibia
Tel: (+264 61) 229855
Fax: (+264 61) 230172
E-mail: drfn@drfn.org.na
Web site: www.drfn.org.na

Erongo Regional Farmers Union
P O Box 174
Omaruru
Tel: (064) 570172
Fax: (064) 571043

Integrated Rural Development & Nature Conservation (IRDNC) - Caprivi Office
Private Bag 1050
Ngweze, Katima Mulilo
Tel: (+264 61) 252518
Fax: (+264 61) 252108
E-mail: irdncc@iafrica.com.na

Integrated Rural Development & Nature Conservation (IRDNC) - Wéreldsend Office
P O Box 24050
Windhoek
Wéreldsend Environmental Centre
Kunene region
Radio telephone: (+264 64) 203581 x 2547
Tel: (+264 61) 697055
Fax: (+264 61) 697054
E-mail: irdncwe@mweb.com.na

Integrated Rural Development & Nature Conservation (IRDNC) - Windhoek Office
P O Box 24050
Windhoek
2nd Floor Kenya House
Robert Mugabe Avenue
Windhoek
Tel: (+264 61) 228506/9
Fax: (+264 61) 228530
E-mail: irdnc@iafrica.com.na

Kavango Regional Farmers Union
P O Box 449
Rundu
Tel: (066) 255104

Legal Assistance Centre (LAC) - Katutura Office
P O Box 604
Windhoek
Red Cross Community Centre
Katutura Windhoek
Tel: (+264 61) 264641 / 262333
Fax: (+264 61) 262297
E-mail: info@lac.org.na
Web site: www.lac.org.na

Legal Assistance Centre (LAC) - Ongwediva Office
Private Bag X5534
Oshakati
Human Rights Centre
Ongwediva
Tel: (+264 65) 230178 / 230444
Fax: (+264 65) 230443
E-mail: hrcosh@liway.na
Web site: www.lac.org.na

Legal Assistance Centre (LAC) - Windhoek Office
P O Box 604
Windhoek
4 Körner Street
Windhoek
Tel: (+264 61) 223356
Fax: (+264 61) 234953
E-mail: info@lac.org.na
Web site: www.lac.org.na

Likwama Farmers Cooperative Union
P O Box 179
Katima Mulilo
Tel: (066) 253561
Fax: (066) 253561

Mandume Farmers Cooperative
P O Box 5
Ohangwena
Tel: (065) 240689
Fax: (065) 256502

Ministry of Agriculture, Water & Forestry
Government Office Park
Luther Street
Private Bag 13184
Windhoek
Tel: (+264 61) 208 7111
Fax: (+264 61) 229961

Ministry of Environment & Tourism
F G I Building
Post Street Arcade
Private Bag 13346
Windhoek
Tel: (+264 61) 284 2111
Fax: (+264 61) 229936

Ministry of Lands, Resettlement & Rehabilitation
Brendan Simbwaye Square
Block A
Private Bag 13343
Windhoek
Tel: (+264 61) 285 2111
Fax: (+264 61) 228240 / 247107

Ministry of Regional and Local Government & Housing
Government Office Park
Cluster D1 West
Luther Street
Private Ba 13289
Windhoek
Tel: (+264 61) 297 5111
Fax: (+264 61) 226049

Multi-disciplinary Research and Consultancy Centre (MRCC)
University of Namibia
Private Bag 13301
Windhoek
Mandume Ndemufayo Avenue
Pioneerspark
Windhoek
Tel: (+264 61) 2063051/2
Fax: (+264 61) 2063030
E-mail: amosimane@unam.na
Web site: www.unam.org

Namibian Association of CBNRM Support Organisations (NACSO)
P O Box 98353
Pelican Square, Windhoek
57 Pasteur Street, Windhoek West
Windhoek
Tel: (+264 61) 230888/796
Fax: (+264 61) 230863
E-mail: patskyer.nacso@iafrica.com.na

Namibia Community-Based Tourism Association (NACOBTA) - Ongangwa Office
P O Box 2941
Ondangwa
Main Street
Rössing Foundation Centre
Ondangwa
Tel: (+264 65) 241327
Fax: (+264 65) 241458
E-mail: erica.nacobta@iway.na
Web site: www.nacobta.com.na

Namibia Community-Based Tourism Association (NACOBTA) - Windhoek
Eros, Windhoek
Webster Street
Windhoek West, Windhoek
Tel: (+264 61) 250558
Fax: (+264 61) 222647
E-mail: office.nacobta@iway.na
Web site: www.nacobta.com.na

Namibia Development Trust (NDT) - Eastern Office
P O Box
Okakarara
MET Office
Okakarara
Tel: (+264 67) 317132
Tel: (+264 67) 317134
E-mail: ndtoka@iway.na

Namibia Development Trust (NDT) - Northern Office
P O Box 425
Oshakati
Human Rights Centre
Ongwediva
Tel: (+264 65) 231622
Tel: (+264 65) 231692
E-mail: ndtosh@iway.na

Namibia Development Trust (NDT) - Southern Office
P O Box 14
Keetmanshoop
Mittel Street
Keetmanshoop
Tel: (+264 63) 223572
Tel: (+264 63) 224211
E-mail: ndtsouth@iway.na

Namibia Development Trust (NDT) - Windhoek Office
P O Box 8226
Bachbrecht, Windhoek
57 Pasteur Street
Windhoek West
Windhoek
Tel: (+264 61) 238002/3
Tel: (+264 61) 233261
E-mail: ndtwhk@iway.na

Namibia National Farmers' Union (NNFU)
P O Box 3117
Windhoek
Axali Doëseb Street
Windhoek
Tel: (+264 61) 271117
Fax: (+264 61) 271155
E-mail: nnfu@mweb.com.na

Namibia Nature Foundation (NNF)

P O Box 245
Windhoek
4th Floor Kenya House
Robert Mugabe Avenue
Windhoek
Tel: (+264 61) 248345
Fax: (+264 61) 248344
E-mail: info@nnf.org.na
Web site: www.nnf.org.na

Namibia Non-Governmental Organisation Forum (NANGOF)

P O Box 70433
Khomasdal, Windhoek
196 Ceaser Street
Wanaheda, Katutura
Windhoek
Tel: (+264 61) 239469
Fax: (+264 61) 239471
E-mail: nangof@iafrica.com.na

Namibia Rural Development Project (NRDP)

P O Box 24886
Windhoek
2716 Abraham Mashego Street
Oponganda Community Centre
Wanaheda
Windhoek

Ngatuuane Regional Farmers Union

P O Box 179
Opuwo
Tel: (065) 273487
Fax: (065) 273139

Nyae-Nyae Development Foundation of Namibia (NNDFN)

P O Box 9026
Eros, Windhoek
9 Delius Street
Windhoek-West
Windhoek
Tel: (+264 61) 236327
Fax: (+264 61) 255997
E-mail: nndfn@iafrica.com.na

Omaheke Regional Farmers Union

P O Box 1595
Gobabis
Tel: (062) 565181

Omaheke San Trust (OST)

P O Box 1017
Gobabis
32 Rossevelt Street
Gobabis
Tel: (+264 61) 564073
Fax: (+264 61) 564073
E-mail: ost@iafrica.com.na

Omusati Farmers Cooperative
P O Box 1053
Oshakti
Tel: (065) 256517
Fax: (065) 256502

Ongushu Farmers Cooperative
P O Box 684
Ondangwa
Tel: 0812433821
Fax: (065) 240566

Ongushu Farmers Cooperative
P O Box 684
Oshakati
Tel; (065) 240689
Fax: (065) 256502

Otjozondjupa Communal Farmers Union
P O box 133
Okakarara
Tel: (067) 317786
Fax: (067) 317008

Rössing Foundation (RF)
Private Bag 13214
Windhoek
Rand Street
Khomasdal, Windhoek
Tel: (+264 61) 211721
Fax: (+264 61) 211273
E-mail: lleroux@rf.org.na
Web site: www.rf.org.na

Rural Institute for Social Empowerment of Namibia (RISE-Namibia)
P O Box 50155
Bachbrecht, Windhoek
Axali Doëseb Street
Windhoek West
Windhoek
Tel: (+264 61) 236029
Fax: (+264 61) 232597
E-mail: rise-ww@iafrica.com.na

Southern Namibia Farmers' Union
Tel: (063) 244243
Fax: (063) 225251

Uukumwe Farmers Cooperative
P O Box 2797
Ondangwa
Tel: 0812433821
Fax: (065) 240566

Welwitchia Regional Farmers Union
P O Box 25
Khorixas
Tel: (065) 331350

Woman's Action for Development (WAD)
P O Box 370
Windhoek
25 Schönlein Street
Swabou Building
Windhoek
Tel: (+264 61) 227630
Fax: (+264 61) 236372
E-mail: wad@mweb.com.na

Working Group of Indigenous Minorities in Southern Africa (WIMSA)
P O Box 80733
Windhoek
8 Bach Street
Windhoek
Tel: (+264 61) 244909
Fax: (+264 61) 272806
E-mail: wimsareg@iafrica.com.na

World Wildlife Fund - living in a Finite Environment (WWF-LIFE)
P O Box 9681
Eros, Windhoek
5th Floor Kenya House
Robert Mugabe Avenue
Windhoek
Tel: (+264 61) 239945
Fax: (+264 61) 239799
E-mail: cweaver@iafrica.com.na

Legal Assistance Centre

Omalalakano

Ombelwa yomauthemba gaantu no mapendululopo, tai amene eeveta dinasha nomauwa oshiwana, otai lalakanene oku kaleka oveta popepi naavo veli kokule noveta, palongo, pakulundulula eveta dikale koshi yekotamhango, paku amena mohofa, okuyandja omayele enasha noveta oshoyo okukalelapo nelalakano lo oku etapo nokukalekapo omaufemba aaveshe opaveta naashi shili mekotamhango loshilongo.

Legal Assistance Centre
P O Box 604
Windhoek
Namibia
Telephone: 061-223356
Fax: 061-234953
E-mail: info@lac.org.na

Land, Environment and Development Project
Legal Assistance Centre

Windhoek
May 2006



LAC