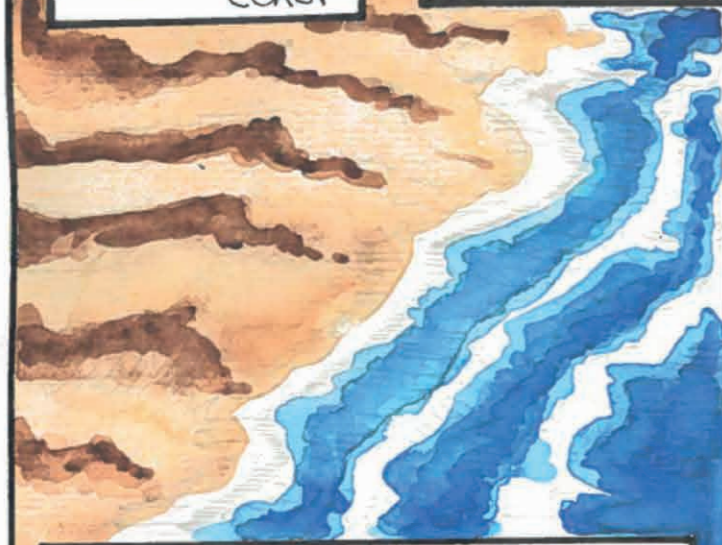


MARINE MAMMALS

SKELETON COAST



NAMIBIA'S ATLANTIC COASTLINE COVERS 1512KM AND LOOKS QUIET CALM...

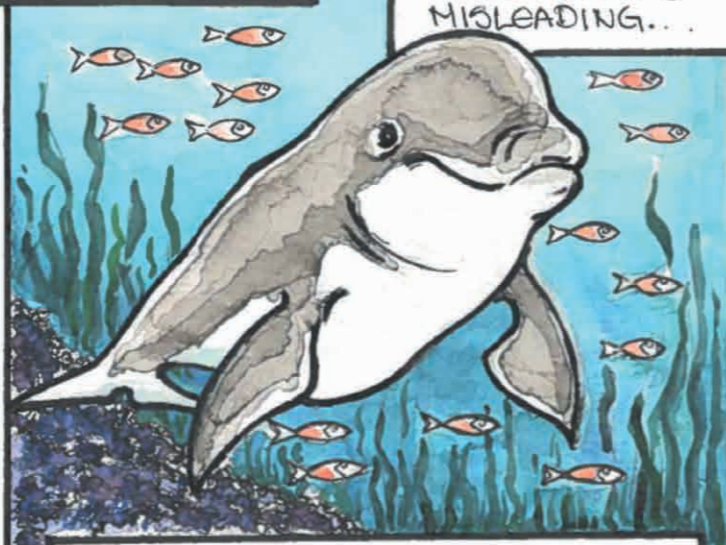


MARINE WHAT?

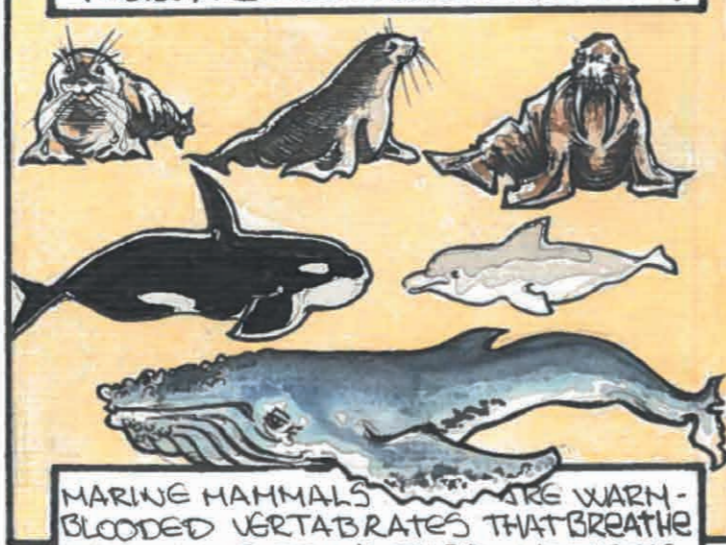


OOH OK I'M PRETTY SURE I KNOW SOME OF THEM. LIKE... SEALS?

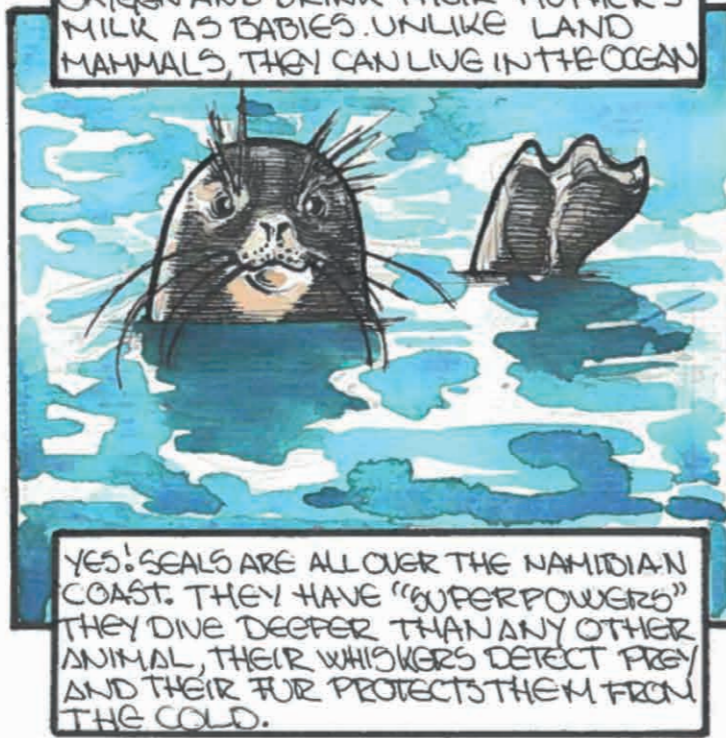
BUT THAT'S MISLEADING...



IT'S ACTUALLY FULL OF LIFE! THERE ARE PLENTY OF PLANTS, FISH AND CORALS... BUT DID YOU KNOW THERE ARE ALSO MARINE MAMMALS?



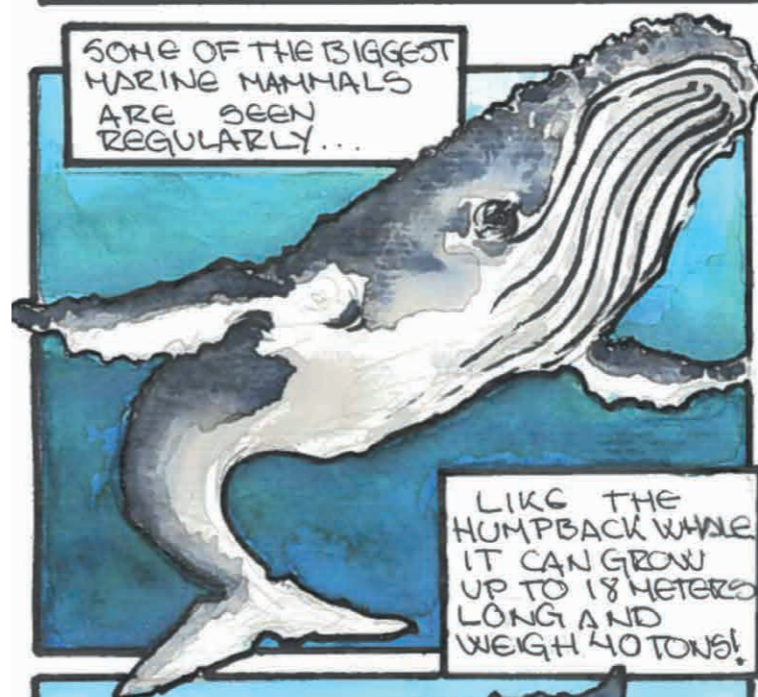
MARINE MAMMALS ARE WARM-BLOODED VERTEBRATES THAT BREATHE OXYGEN AND DRINK THEIR MOTHER'S MILK AS BABIES. UNLIKE LAND MAMMALS, THEY CAN LIVE IN THE OCEAN



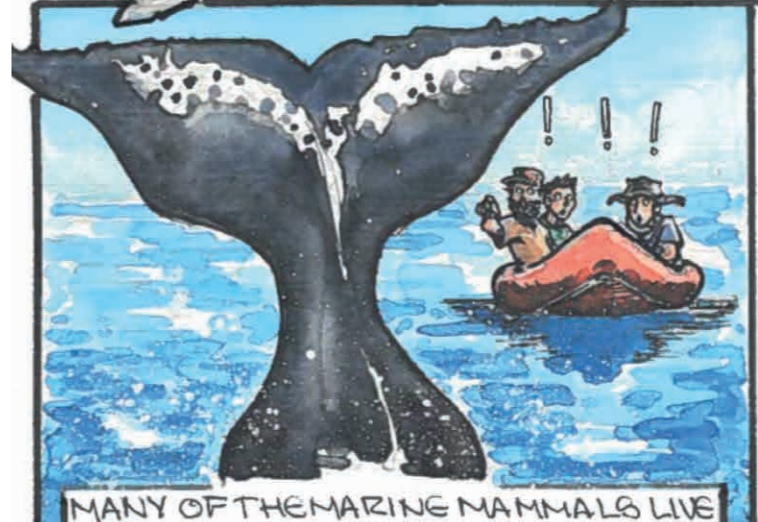
YES! SEALS ARE ALL OVER THE NAMIBIAN COAST. THEY HAVE "SUPERPOWERS" THEY DIVE DEEPER THAN ANY OTHER ANIMAL, THEIR WHISKERS DETECT PREY AND THEIR FUR PROTECTS THEM FROM THE COLD.

BUT SEALS ARE NOT THE ONLY MARINE MAMMALS IN THE AREA. AT LEAST 25 SPECIES OF CETACEAN (WHALES, DOLPHINS) LIVE IN NAMIBIAN WATERS.

SOME OF THE BIGGEST MARINE MAMMALS ARE SEEN REGULARLY...

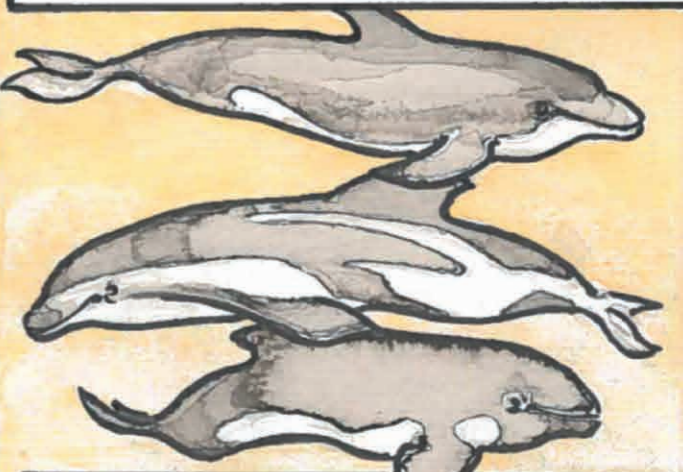


LIKE THE HUMPBACK WHALE IT CAN GROW UP TO 18 METERS LONG AND WEIGH 40 TONS!



MANY OF THE MARINE MAMMALS LIVE UNDER WATER BUT SOMETIMES IF WE ARE LUCKY WE CAN SEE THEIR FINS OR TAILS. ALTHOUGH THEY CAN BE LARGE THEY ARE ALSO VULNERABLE AND NEED PROTECTION.

DON'T FORGET DOLPHINS! THERE ARE AT LEAST 3 SPECIES IN THE NAMIBIA SEA: BOTTLENOSE, DUSKY AND HEAVYSIDE DOLPHINS.



THE HEAVYSIDE ARE AMONG THE SMALLEST DOLPHINS IN THE WORLD



DID YOU KNOW THAT 8 MILLION TONS OF PLASTIC END UP IN THE OCEAN EACH YEAR? MORE THAN 100000 MARINE MAMMALS DIE EVERY YEAR FROM EATING THIS PLASTIC.



SO... WHAT CAN WE DO TO HELP?

DON'T LITTER! DON'T LEAVE ANY WASTE ON BEACHES, IN THE WATER, OR ANYWHERE IN NATURE. IT'S THE SIMPLEST WAY TO PROTECT MARINE MAMMALS!