

Okudhimbulula oonkalo DHOMAHEPEKO GUUNONA

Ombili shaashi aavali yoye noyokamwanyokogona Karen ayehe ya sila moshiponga sheipumumumwe lyiihauto. Metestamendi lyawo, aavali yoye oye tu indile opo tu kale aatekuli yoye. Oto ka kala nanyokogona Irene nangame. Karen ota ka kala nayinagona Monika nahekulu Jeff.



Ombili shaashi aavali yoye noyokamwanyokogona Emily ayehe oya sila moshiponga sheipumomumwe lyooauto. Metestamendi lyawo, aavali yoye oye tu indile opo tu kale aatekuli yoye. Oto ka kala nahokulu Jeff nangame. Emily ota ka kala nayinagona Irene nomumati gwe Mark.



Emily, onde ku lombwele u ye u ka landele ndje ombiila nuusekeleta.

Ndele otandi longo iithigilwalonga yandje yokegumbo yosikola nonda pumbwa okukala ndo opaleka egumbo omanga meme Irene inaa zimbuka.



Oto lombwele ndje shoka ndi na okuninga? Oto ipula kutya ohatu ku pe iikulya nehala lyokukala oshali? Owu na okuya NGASHINGEYI!



Eewa, otandi yi. Alikana ino dhenga ndje we.



Kapu na uulalelo woye nena mpaka.

Osho sha kala ngaaka. Esiku nesiku Emily oku li oshihakanwa shomahepeko guunona. Mark, omumati gwayinagona, ohe mu dhenge esiku kehe. Ohe mu longitha wo iilonga oyindji megumbo. Oshi li nawa okulongitha uunona iilonga megumbo, ashike Mark oha longitha unene Emily iilonga oyindji noha faula kosikola noiha kala nethimbo lyokuvulukwa nenge yokudhana. Shika kashi shi oshiwana. Mark oha ningi unene nayi Emily inaashi fa shoka ha ningi uunona we. Endhindhiliko limwe lyomahepeko guunona olyo uuna okanona kamwe taka ningwa nayi unene inaashi faathana nuukwawo megumbo. Emily ke uvite ombili. Kongulohi sho ta yala iikumbatha ye polupanda, olundji oha kala ti ipula nkene okamwayinagona ke li nayinagona gulwe.

MAANDJAKAREN ...



Osho ngaaka Karen a ningi ombangi yomanyenyeto galwe ngoka ga ka fala sigo omokukondja. Monika iha hepeke nando Karen, ashike natango oshi li efano lyomahepeko guunona, ehepeko lyopalutu, paihulo nenge pankalathano nomuntu gwontumba. Karen okwa tila yinagona molwashoka koongulohi olundji ohi ipatele mondunda ye e ta lili e ta dhiladhila kutya, ando okwa li aavali ye ye na omwenyo. Omausiku ogendji oha kala ti ipula okamwayinagona hene ke li po nayinagona gumwe.



Tatekulu Jeff, ondi mu hole amuhe namemegona, ashike kandi hole sho he ku dhenge. Alikana inda u ka popye nomusita gwetu kombinga yaashoka sha ningwa po. Ngiika ota vulu oku tu kwatha.

Aawe, ino shi lombwela nando omuntu. Nyokogona oku tu hole atuhe. Kape na mbudhi. Osha li epuko lyandje, molwashoka onde mu fundju.



Ashike kosikola ondi ilonga kombinga yomahepekathano gomomagumbo. Shoka sha ningwa maandjetu osho omahepekathano gomomagumbo. Ota pumbwa okumona ekwatho.

Aawe, itatu lombwele nando olye.

Otashi vulika shi kale oshidhigu kuunona opo wu pule ekwatho uuna wu li moonkalo dhomahepeko. Shika omolwashoka uunona ohawu kala wu wete oshidhigu opo wu lombwele omukuluntu kombinga yomahepeko. Uuna okanona ka pula ekwatho, ngele omukuluntu ina hala okupulakena, okanona ihaka kala we ka manguluka opo ka ka konge ekwatho palwe. Jeff oha hepekwa megumbo, noshi li oshidhigu kunakuhepekwa opo e shi popye mo. Ashike oku na oshinakugwanithwa shokusila Karen oshimpwiyu. Okwa pumbwa okukonga ekwatho lye nokatekulu.

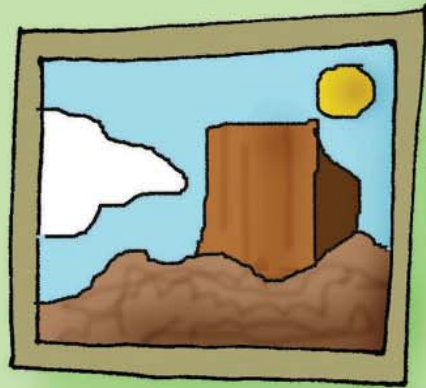
Osho ngeyi, onkalamwenyo oya ningi ondhigu kuEmily.
Okwa faula osikola uule wiiwike iyali molwashoka
okwa dhengwa komumati gwayinagona.

Omulongi gwawo gwOmwaalu, tate Klaazen, okwa
kala ti ipula noonkondo kombinga yaEmily. Kakwa li
u uvite kutya omolwashike ihee ya kosikola. Okwa
tokola a ka talele po Emily noyaandjawa kegumbo.



KONIMA ESIKU NDYOKA, OMUNIILONGA GWONKALONAWA OKWA TALELE PO AANEGUMBO YAEMILY. OKWI INDILE OPO A POPYE NAEMILY PAUMWENE.

Onda hala oku ku kwathela.
Oto vulu okulombwela ndje
ngoka e ku ningi ngawo?



Otatekulu Mark. Aluhe
oha kongo omatompelo
opo a dhenge ndje. Meme
Irene okwa li kiilonga
sho ta dhenge ndje. Oha
longo oowili dha pitilila
sigo okongulohi kwa
toka. Tatekulu Mark aluhe
oha kala a geela ndje
noha dhenge ndje nenge
kaa pe ndje iikulya.

Onda nyanyukwa sho
twa mono uyelele
kombinga yaashika.
Otatu ka hulitha
po omahepeko.
Otatu ka konga
omuntu gwontumba
i ili ngoka ta kala
nangoye omanga tatu
konakona uupyakadhi.

Otandi vulu okukala
nokamwamemegona Karen?
Oha kala namemegona Morika.
Onde mu yuulukwa unene.
Inandi mu mona nando muule
woomwedhi dha piti nonando
ohatu kala mondoolopa yimwe.

EMILY

OMUNIILONGA GWONKALONAWA OKWA TALELE
PO KAREN MAANDJAWO YAMONIKA NAJEFF.

Ngame omuniilonga
gwonkalonawa nda zi
kOshikondo shEgamen
lyOomeme nUunona.
Omulongi gwokosikola
yooEmily okwa lopota
kutya Emily oha hepekwa.
Ngame otandi konakona
oshipotha shika. Ondu uva
kutya okamwayinagona
Karen ohaka kala nangoye
nomusamane gwoye.

Karen okanona
okawanawa. Katu na
nando omaupyakadhi
gasha nako. Tse
ofamili ombwanawa.

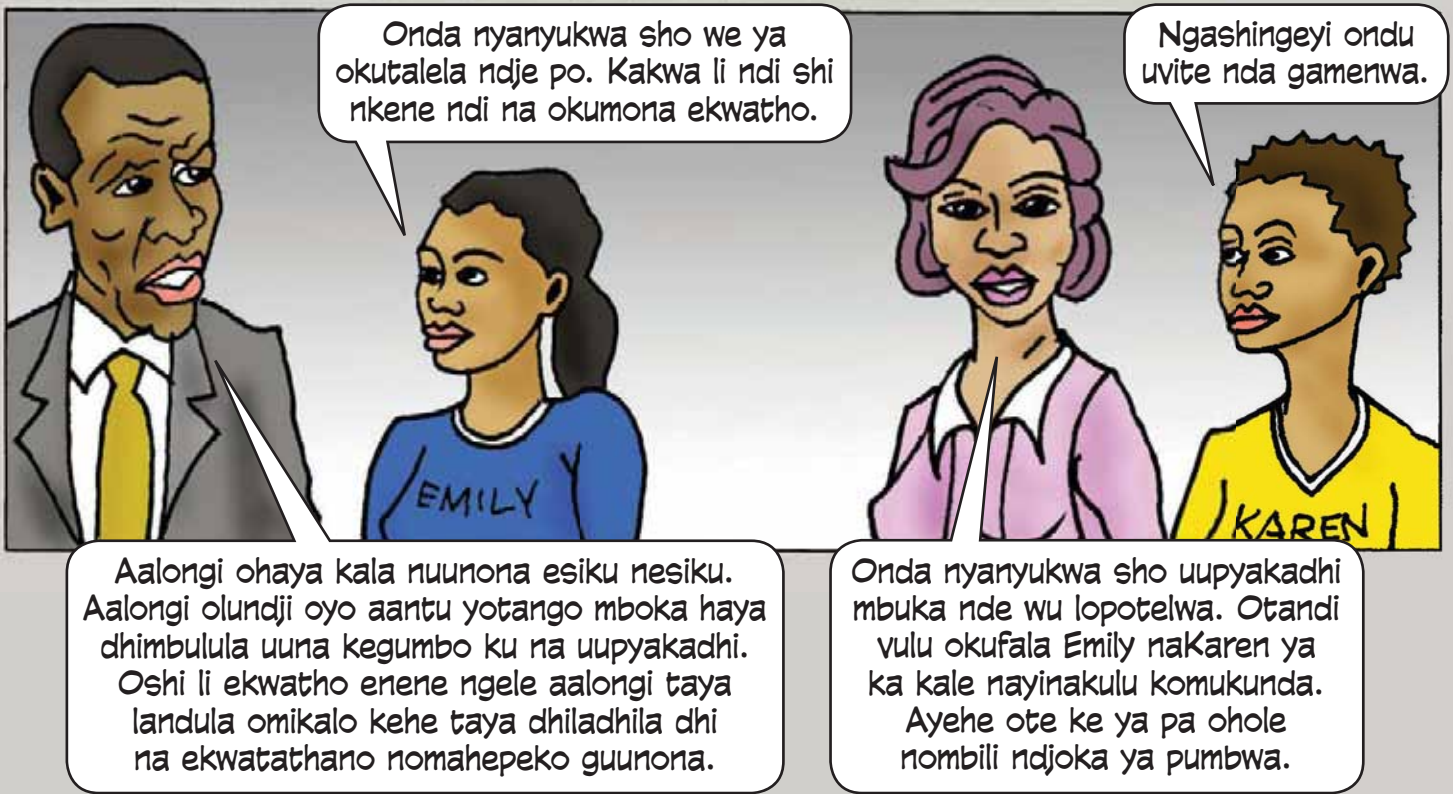
Otandi vulu
okupopya naKaren?



Alikana kwathii ndje.
Memegona oha
dhenge tatekulu. Iha
hepeke ndje, ashike
onda tila kutya
pamwe ote ke shi
ninga esiku limwe.



Osho omukalo
gokuhepeka uunona
oku wu hepeka
palutu, paihulo nenge
pankalathano. Onda
nyanyukwa sho wa
lombwele ndje kombinga
yaashika. Otandi
ke ku kwathela.



OMAHEPEKO GUUNONA OSHIKE?

1. Omahepeko guunona ogo okumonitha uunona iihuna. Uunona ohawu hepekwa kaantu mboka wu shi ngaashi aakwanezimo yawo nenge aantu yomomukunda, nenge aayendanandjila.
2. Opu na omikalo dha yooloka dhomahepeko. Shika osha kwatela mo emahepeko gopalutu, gopamilalo, gopaiyemo nogopankalathano.
3. Uuna uunona tawu hepekwa kaakwanezimo, shika osho omahepeko gomomagumbo. Osho wo omahepeko gomomagumbo ngele okanona ohaka hepekwa palutu, paihulo nenge pankalathano komunegumbo.

SHOKA WU NA OKUNINGA NGELE NGOYE OKANONA NDELE OHO HEPEKWA

1. Popya nomukuluntu nenge nakuume koye ngoka wi inekela. Otashi vulika a kale omunegumbo, omulongi nenge omusita.
2. Lombwela omukuluntu nenge kuume koye e ku kwathele a dhengele omuniilonga gwonkalonawa, Oshikondo shEgamenno lyOomeme nUunona nenge opolisi. Oto vulu wo okudhengela omuniilonga gwonkalonawa nenge omunambelewa gwopolisi paukililo.
3. Ngele ino mona omuntu gwontumba ngoka ta vulu oku ku kwathela nenge ku shi lela shoka u na okuninga, oto vulu okudhengela kongodhi yoshali yoLifeLine/ChildLine ko-116. Otaya vulu oku ku pa omayele.

SHOKA WU NA OKUNINGA NGELE OWU SHI KUTYA OKANONA OHAKA HEPEKWA

Lopota oshinima shika komuniilonga gwonkalonawa, kOshikondo shEgamenno lyOomeme nUunona nenge kopolisi.

Ngele owu na omagwedhelopo nenge epulo kombinga yokatuuna ndjika, dhengela oLegal Assistance Centre:

Email: comic@lac.org.na

Fax: 088-613693

Post: P.O. Box 604 Windhoek

Otwa hala okuwa okomenda nenge epulo loye kombinga yokatuuna ndjika.



Omachiladhilo gehokololo: YOLANDE ENGELBRECHT

Omundongeki: NDALIPO MUPUPA

Omafano, omutholomo netulomelandulathano: DUDLEY VIALI naPERRI CAPLAN

Omuwiliki gwoprojeka: RACHEL COOMER naDIANNE HUBBARD

Omukwatheli: DUTCH MINISTRY OF FOREIGN AFFAIRS, MDG3 FUND

Omuryanyangidhi: JOHN MEINERT PRINTING (PTY) LTD

Omuholokithimbo: GENDER RESEARCH & ADVOCACY PROJECT, LEGAL ASSISTANCE CENTRE, 2011

Okafo haka otaka vulu okuningwa ookopi omolwomalalakano ge na sha nelongo, shampa ashike onzo ya tseyithilwa.

Ontopolwa yokanyolwa haka yopalusheno otayi adhika ko-website yo-LAC: www.lac.org.na